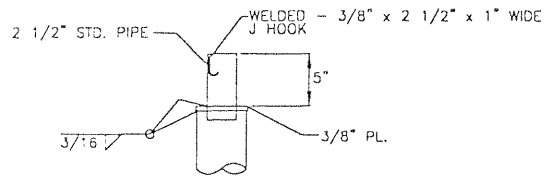
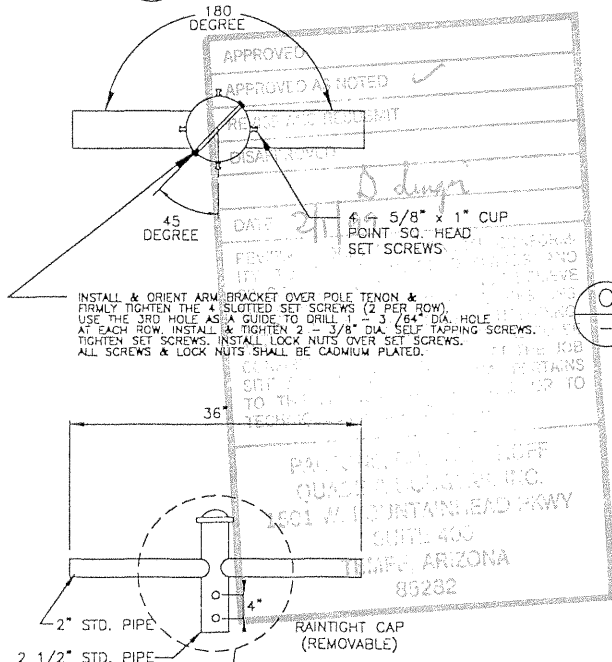


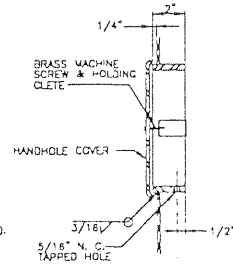
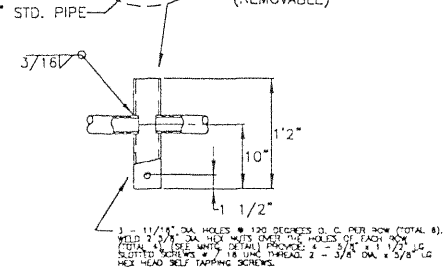
POLE ASSEMBLY



A POST TOP



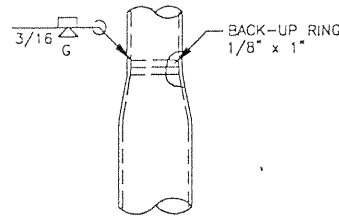
TWIN LUMINAIRE BRACKET AND SET SCREW DETAIL



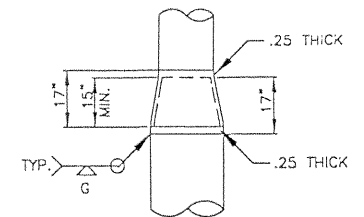
D BASE & HANDHOLE DETAIL

NOTES:

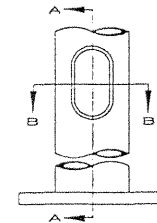
1. CONSTRUCTION - ARIZONA DEPARTMENT OF TRANSPORTATION STANDARD SPECIFICATIONS FOR ROAD AND BRIDGE CONSTRUCTION, 1990 EDITION, AND THE ADOT 1985 TRAFFIC SIGNALS & LIGHTING STANDARD DRAWINGS. ANALYSIS AND DESIGN - AASHTO STANDARD SPECIFICATIONS FOR STRUCTURAL SUPPORTS FOR HIGHWAY SIGNS, LUMINAIRES AND TRAFFIC SIGNALS, 1994.
2. PIPE SHALL HAVE MINIMUM YIELD STRENGTH OF 42 KSI.
3. ALL OTHER STEEL SHALL HAVE A MINIMUM YIELD STRENGTH OF 36 KSI.
4. ANCHOR BOLTS SHALL BE PER SHEET NO. ____.
5. WELDING SHALL CONFORM TO AWS D1.1 (LATEST EDITION).
6. POLE SHALL BE GALVANIZED PER ASTM A 123.



C CONNECTION DETAIL

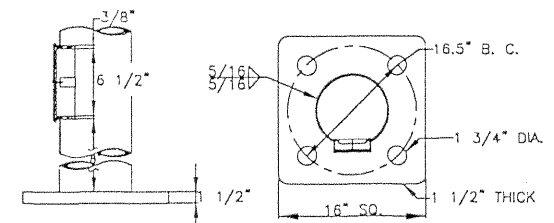


B SLIP JOINT



SECTION A-A

SECTION B-B



GEM-TEC CORPORATION	
TYPE "U" POLE	
68 FT.	
SHEET _ OF _	
UPOLE68.DWG	12/4/98