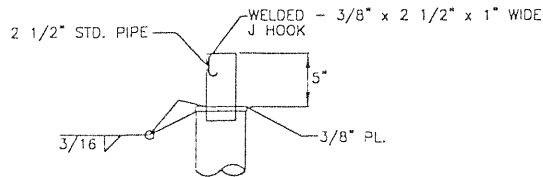
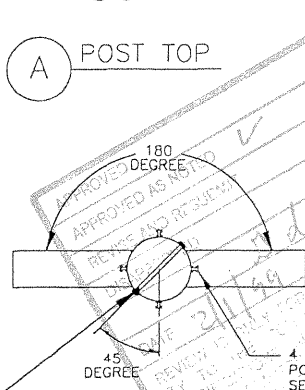


POLE ASSEMBLY

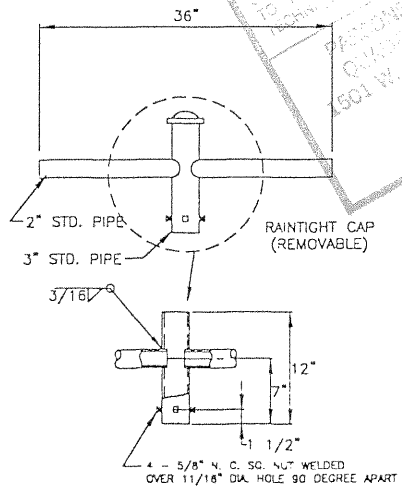


A POST TOP

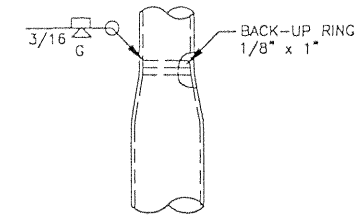
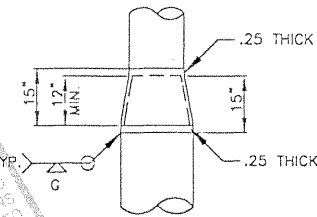


C SLIP JOINT

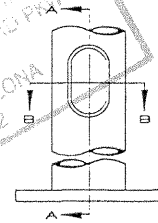
AFTER BRACKET HAS BEEN INSTALLED ON POLE TENON, DRILL 3/8" x 4 1/2" HEX HEAD CADMIUM PLATED BOLT, NUT & WASHER



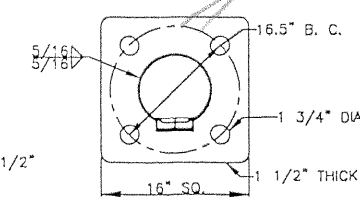
TWIN LUMINAIRE BRACKET AND SET SCREW DETAIL



B CONNECTION DETAIL

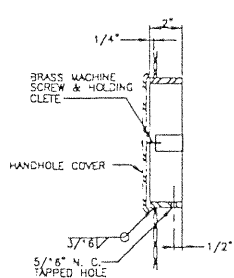


SECTION A-A



SECTION B-B

D BASE & HANDHOLE DETAIL



NOTES:

1. CONSTRUCTION - ARIZONA DEPARTMENT OF TRANSPORTATION STANDARD SPECIFICATIONS FOR ROAD AND BRIDGE CONSTRUCTION, 1990 EDITION, AND THE ADOT 1985 TRAFFIC SIGNALS & LIGHTING STANDARD DRAWINGS, ANALYSIS AND DESIGN - AASHTO STANDARD SPECIFICATIONS FOR STRUCTURAL SUPPORTS FOR HIGHWAY SIGNS, LUMINAIRES AND TRAFFIC SIGNALS, 1994.
2. 5", 6" & 8" DIA. PIPE SHALL HAVE MINIMUM YIELD STRENGTH OF 42 KSI.
3. ALL OTHER STEEL SHALL BE PER ASTM A 36 OR A 53B.
4. ANCHOR BOLTS SHALL BE PER SHEET NO. _____
5. WELDING SHALL CONFORM TO AWS D1.1 (LATEST EDITION).
6. POLE SHALL BE GALVANIZED PER ASTM A 123.

GEM-TEC CORPORATION	
TYPE "U" POLE	
65 FT. W/ MOD. ARM	
	SHEET _ OF _
UPOLE65C.DWG	12/4/98

draw correctly