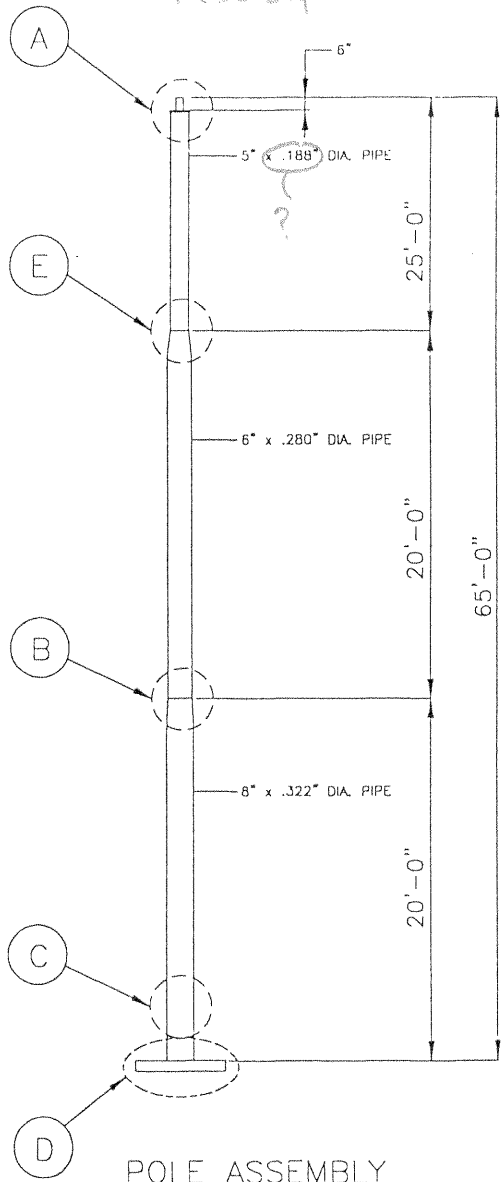
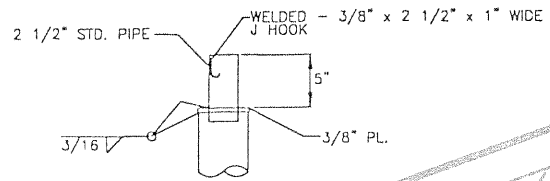


- Secondary bonding?
 - is 10' 5" x 0.188" Dia. Pipe standard?
 - 55 ksi bolts will be acceptable with the rectangular bolt pattern, See 1, 3 & 4 where
 FK-0.5G

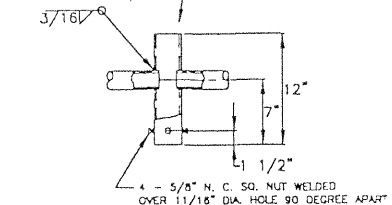
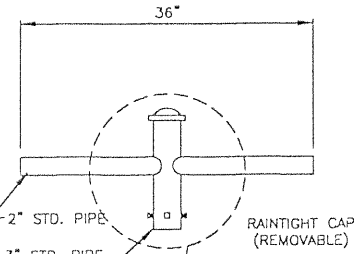
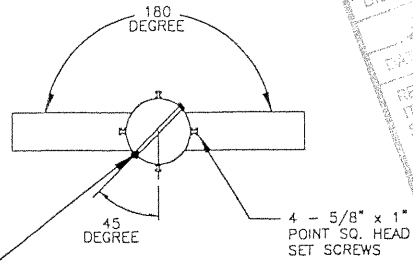
- specify 1/2" weight + area, specify velocity wind load + other specs



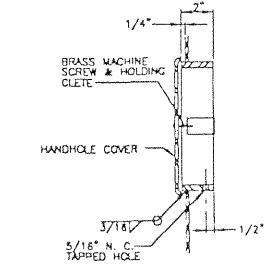
POLE ASSEMBLY



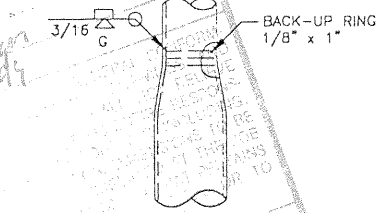
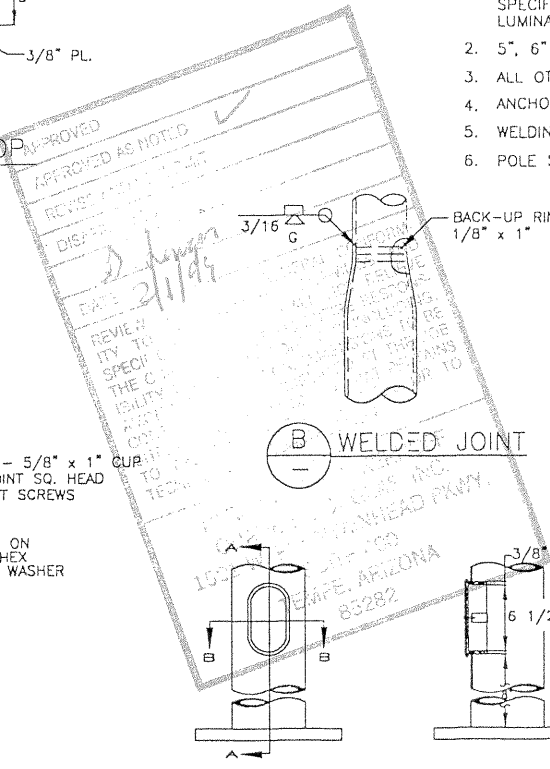
(A) POST TOP



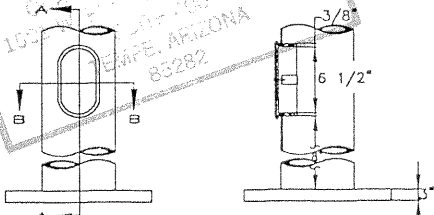
TWIN LUMINAIRE BRACKET AND SET SCREW DETAIL



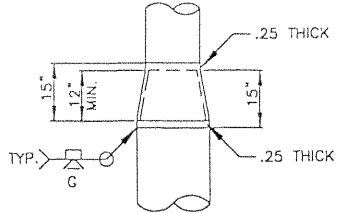
(C) HAND HOLE DETAIL



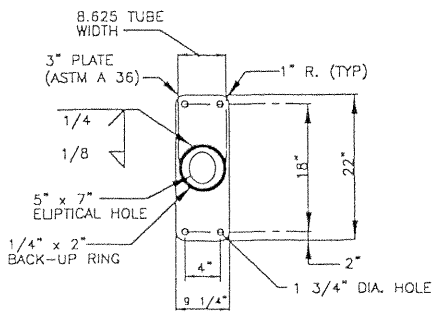
(B) WELDED JOINT



SECTION A-A



(E) SLIP JOINT



SECTION B-B

NOTES:

1. CONSTRUCTION - ARIZONA DEPARTMENT OF TRANSPORTATION STANDARD SPECIFICATIONS FOR ROAD AND BRIDGE CONSTRUCTION, 1990 EDITION, AND THE ADOT 1985 TRAFFIC SIGNALS & LIGHTING STANDARD DRAWINGS. ANALYSIS AND DESIGN - ASHTO STANDARD SPECIFICATIONS FOR STRUCTURAL SUPPORTS FOR HIGHWAY SIGNS, LUMINAIRES AND TRAFFIC SIGNALS, 1994.
2. 5", 6" & 8" PIPE SHALL HAVE MINIMUM YIELD STRENGTH OF 42 KSI.
3. ALL OTHER STEEL SHALL BE PER ASTM A 36 OR A 53B.
4. ANCHOR BOLTS SHALL BE PER SHEET NO. _____ ?
5. WELDING SHALL CONFORM TO AWS D1.1 (LATEST EDITION).
6. POLE SHALL BE GALVANIZED PER ASTM A 123.

(D) BASE PLATE DETAIL

GEM-TEC CORPORATION	
TYPE "U" POLE	
65 FT. W/ MOD. BASE	
	SHEET _ OF _
UPOLE65B.DWG	12/4/98