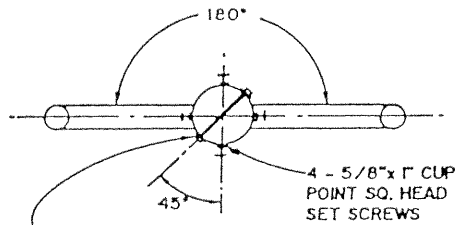
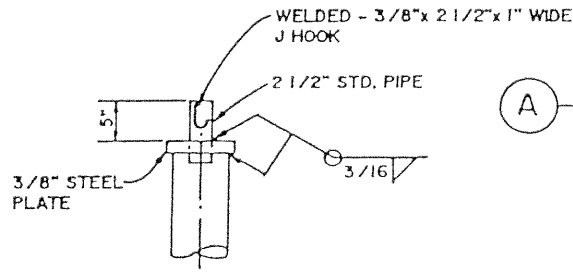


NOTES:

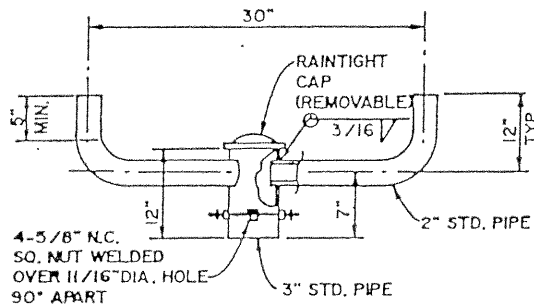
- CONSTRUCTION-ARIZONA DEPARTMENT OF TRANSPORTATION STANDARD SPECIFICATIONS FOR ROAD AND BRIDGE CONSTRUCTION, 1990 EDITION, AND THE ADOT 1985 TRAFFIC SIGNALS & LIGHTING STANDARD DRAWINGS, ANALYSIS AND DESIGN- AASHTO STANDARD SPECIFICATIONS FOR STRUCTURAL SUPPORTS FOR HIGHWAY SIGNS, LUMINAIRES AND TRAFFIC SIGNALS, 1994.
- 5", 6", AND 8" DIA. PIPE SHALL HAVE MINIMUM YIELD STRENGTH OF 42 KSI.
- ALL OTHER STEEL SHALL BE PER ASTM A 36 OR A 53B.
- ANCHOR BOLTS SHALL BE PER SHEET NO.
- WELDING SHALL CONFORM TO AWS D1.1 (LATEST EDITION)
- POLE AND BRACKET SHALL BE GALVANIZED PER ASTM A 123.



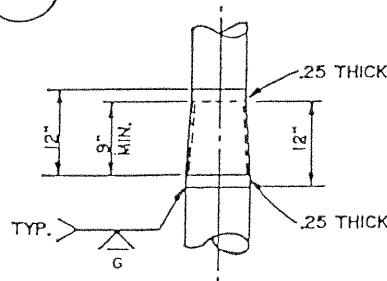
AFTER BRACKET HAS BEEN INSTALLED ON POLE TENON, DRILL FOR 3/8"x 4 1/2" HEX HEAD CADMIUM PLATED BOLT, NUT & WASHER



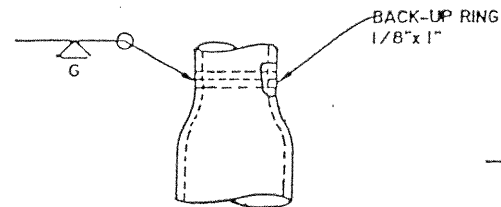
A POLE TOP DETAIL



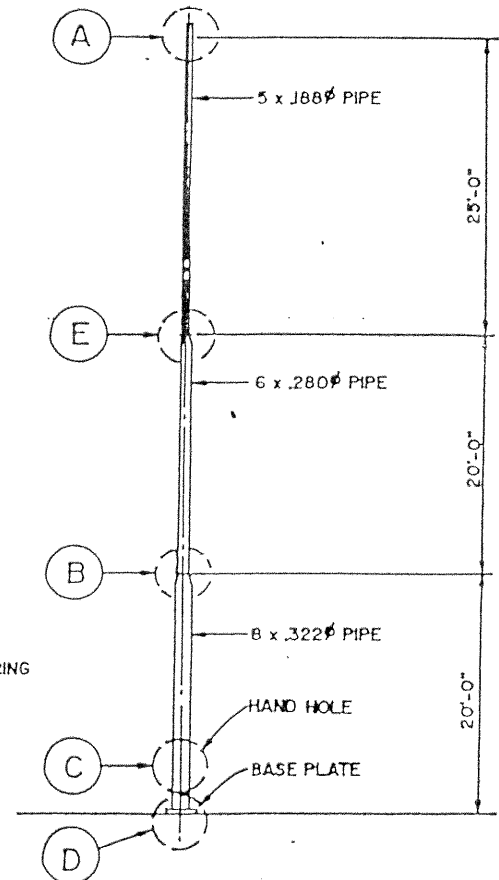
TWIN LUMINAIRE BRACKET AND SET SCREW DETAIL



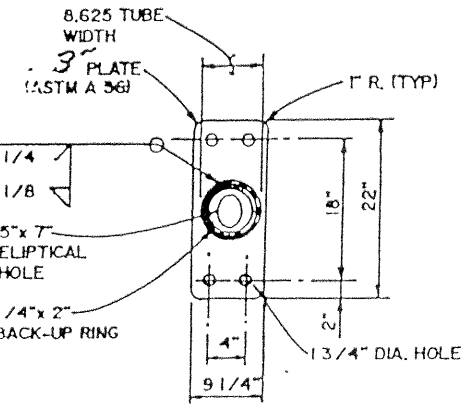
E SLIP JOINT



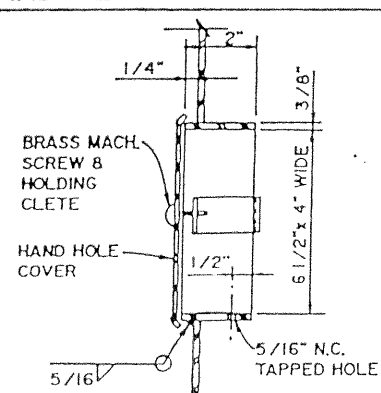
B WELDED JOINT



"U" - POLE



D BASE PLATE



C HAND HOLE DETAIL

CEM-TEC		
TYPE "U" POLE		
DESIGNER R.A.Y.		SUPERVISOR H.P.E.
		FINAL INSPECTION

