

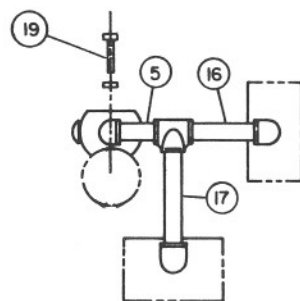
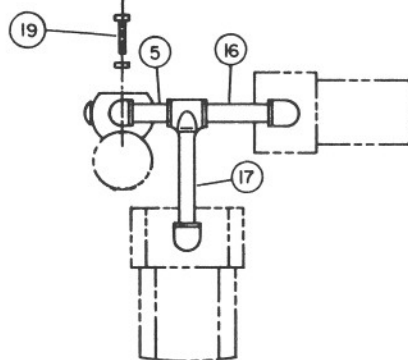
Plan Symbols

TABLE TO BE USED FOR FINDING NIPPLE LENGTH
(ITEM 12)

SIGNAL FACES COMBINATION	NIPPLE LENGTH (ITEM 3)					
	C	J	F	M	N	G
C	ϕ	3 5/8	12 7/8	13 3/4	18 3/8	27 5/8
J	3 5/8	ϕ	8 1/4	9 1/8	13 3/4	23
F	12 7/8	8 1/4	ϕ	3	4 1/2	13 3/4
M	13 3/4	9 1/8	3	ϕ	3 5/8	12 7/8
N	18 3/8	13 3/4	4 1/2	3 5/8	ϕ	8 1/4
G	27 5/8	23	13 3/4	12 7/8	8 1/4	ϕ

SIGNAL FACE	NIPPLE LENGTH (ITEM 3)					
	C	J	F	M	N	G
NIPPLE LENGTH	24	28 5/8	37 7/8	38 3/4	43 3/8	52 5/8

Threads On One End Only



Mounting Orientation Plans

Fixed Direction Of Bracket Arms Predetermined At Site. Direction Of Signal Heads To Be Determined By Engineer.

LIST OF MATERIALS

Item	Qty	Description
1	1	Terminal Compartment For Side Mtg. (See T.S. 10-4-1)
2	1	Ornamental Cap (See T.S. 10-1-6)
3	1	1 1/2" Pipe, See Table
4	1	1 1/2" 90° Elbow, Drill & Tap For Setscrew
5	1	1 1/2" I.D. Pipe Nipple, 12 1/2" Long
6	1	1 1/2" Pipe Tee
7	2	90° Elbow
8	2	Flat Washer
9	2	Neoprene Washer
10	1	1 1/2" I.D. Pipe Nipple, 12" Long
11	4	1 1/2" Lock Nipple, See Note 1
12	1	1 1/2" I.D. Pipe Nipple, See Table
13	1	1 1/2" Coupling, As Required
14	2	Signal Head, See Plans
15	2	90° Elbow With Locking Device (See T.S. 10-1-2)
16	2	1 1/2" I.D. Pipe Nipple, 12" Long
17	2	1 1/2" I.D. Pipe Nipple, 12" Long
18	1	1 1/2" I.D. Pipe Nipple, 9 1/2" Long, Ped. Signal Only
19	2	1/2" x 2" Galvanized Steel Bolt 13-UNC With Flat Washer And Lock Washer
20	1	Conduit Lock Nut (For 'F' & 'M' Combination Only)
21	1	1 1/2" I.D. Pipe Nipple, 3" Long (For 'F' & 'M' Comb. Only)
22	1	Malleable Hex. Nut (For 'F' & 'M' Combination Only)

NOTES:

- Lock Nipple Length Shall Be 1 1/8" For 8" Heads And 1 3/4" For 12" Heads.
- For Pole Drilling Detail See T.S. 4-18.

* Special Nipple Length For Use Only With Ped. Signal Single Head Units.

DESIGN APPROVED <i>Barbie Brown</i> 7/24/65	STATE OF ARIZONA DEPARTMENT OF TRANSPORTATION DIVISION OF HIGHWAYS STANDARD DRAWINGS	REV.
APPROVED FOR DISTRIBUTION <i>[Signature]</i>	TYPE VIII MOUNTING ASSEMBLY	DRAWING NO. T.S. 9-6