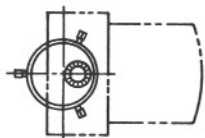


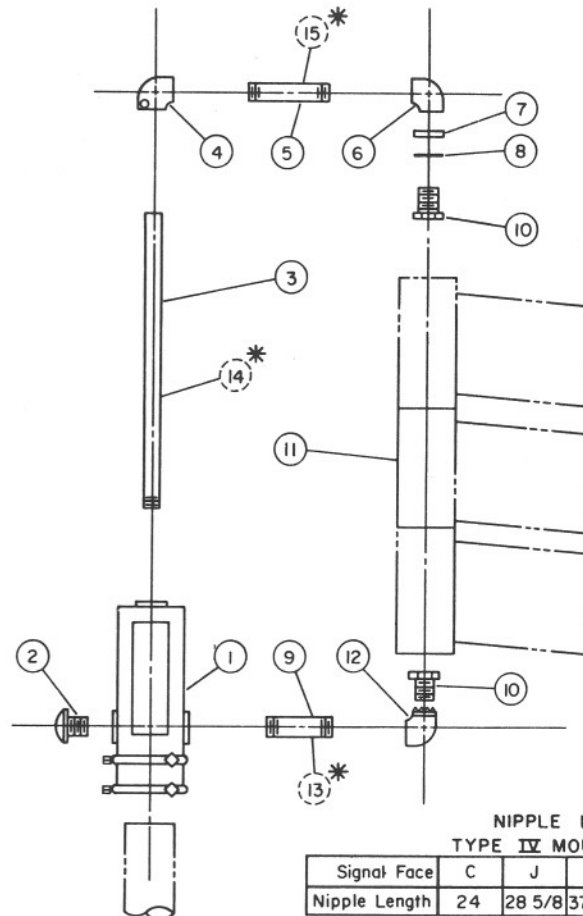
TYPE III MOUNT



MOUNTING ORIENTATION PLAN



PLAN SYMBOL

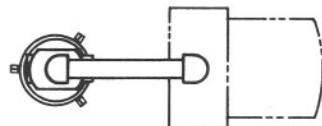


NIPPLE LENGTH  
TYPE IV MOUNT (ITEM 3)

Signal Face	C	J	F	M	N	G
Nipple Length	24	28 5/8	37 7/8	38 3/4	43 3/8	52 5/8

Threads on one end only

TYPE IV MOUNT



MOUNTING ORIENTATION PLAN



PLAN SYMBOLS

\* Nipple Lengths For Use With Pedestrian Signal Units,  
Or Illuminated Message Units.

**TYPE III MOUNT  
LIST OF MATERIALS**

Itm.	Qu.	Description
1	1	Ornament Cap (T.S. 10-1-6)
2	1	Neoprene Washer
3	1	Conduit Locknut
4	1	Flat Washer
5	1	1 1/2" Lock Nipple 1 1/8" Long
6	1	Pole Top Offset Mount (T.S. 10-1-3)
7	1	Signal Head - See Plans

**TYPE IV MOUNT  
LIST OF MATERIALS**

Itm.	Qu.	Description
1	1	Pole Top Mounted Terminal Compartment (T.S. 10-4-2)
2	1	Ornamental Cap (T.S. 10-1-6)
3	1	1 1/2" Center Pipe, See Table
4	1	90° Elbow, Drill & Tap For Setscrew
5	1	1 1/2" Pipe Nipple, 6 1/2" Long
6	1	90° Elbow
7	1	Flat Washer
8	1	Neoprene Washer
9	1	1 1/2" Pipe Nipple, 6" Long
10	2	1 1/2" Lock Nipple See Note Below
11	1	Signal Head, See Plans
12	1	90° Elbow With Locking Device (T.S. 10-1-2)
* 13	1	1 1/2" Pipe Nipple, 12" Long
* 14	1	1 1/2" Pipe Nipple, 9 1/2" Long For Ped. Signal For Illuminated Message Units Use 23 5/8" x 1 1/2" Pipe
* 15	1	1 1/2" Pipe Nipple, 12 1/2" Long

**NOTE:**

Lock Nipple Length shall be 1 1/8" for 8" heads and 1 3/4" for 12" heads.

DESIGN APPROVED <i>Carly B...</i> 7/24/65	STATE OF ARIZONA DEPARTMENT OF TRANSPORTATION DIVISION OF HIGHWAYS STANDARD DRAWINGS	REV.
APPROVED FOR DISTRIBUTION <i>A. J. ...</i>	<b>TYPE III &amp; IV MOUNTING ASSEMBLIES</b>	DRAWING NO. <b>T.S. 9-2</b>