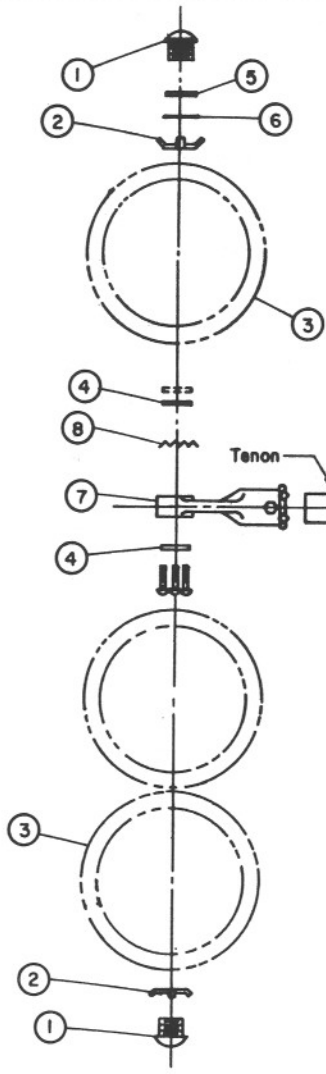
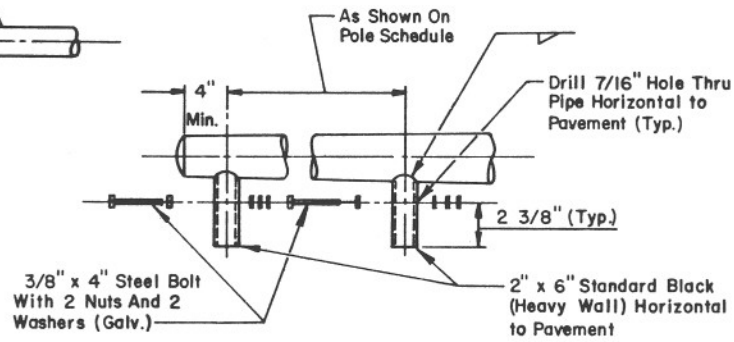


TYPE I MOUNT



TYPE II MOUNT



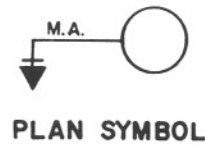
TENON DETAIL

TYPE I MOUNT
LIST OF MATERIAL

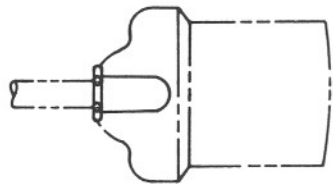
Itm.	Qu.	
1	1	Mast Arm Plumbizer With Locking Device (See T.S. 10-2)
2	1	Signal Head, See Plans
3	1	Conduit Locknut
4	1	1 1/2" x 1 3/4" Lock Nipple
5	1	Lock Ring (See T.S. 10-1-4)
6	1	Ornamental Cap (See T.S. 10-1-6)

TYPE II MOUNT
LIST OF MATERIAL

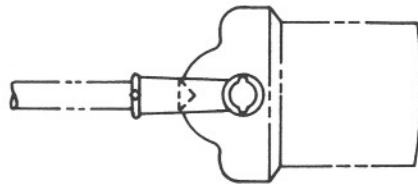
Itm.	Qu.	
1	2	Ornamental Cap (See T.S. 10-1-6)
2	2	Conduit Locknut
3	1	Signal Head, See Plans Pole Layout
4	2	Attaching Washers W/ 3-1/4-20 UNC x 3 1/2 Carriage Bolts and Nuts
5	1	Flat Washer
6	1	Neoprene Washer
7	1	Elevator Plumbizer (See T.S. 10-2)
8	1	Lock Washer



PLAN SYMBOL



MOUNTING ORIENTATION PLAN



MOUNTING ORIENTATION PLAN

DESIGN APPROVED <i>Charles Brown</i> 7/24/65	STATE OF ARIZONA DEPARTMENT OF TRANSPORTATION DIVISION OF HIGHWAYS STANDARD DRAWINGS	REV.
APPROVED FOR DISTRIBUTION <i>[Signature]</i>	TYPE I & II MOUNTING ASSEMBLIES	DRAWING NO. T.S. 9-1