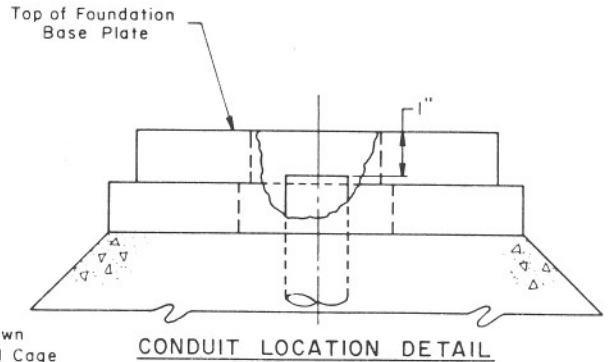
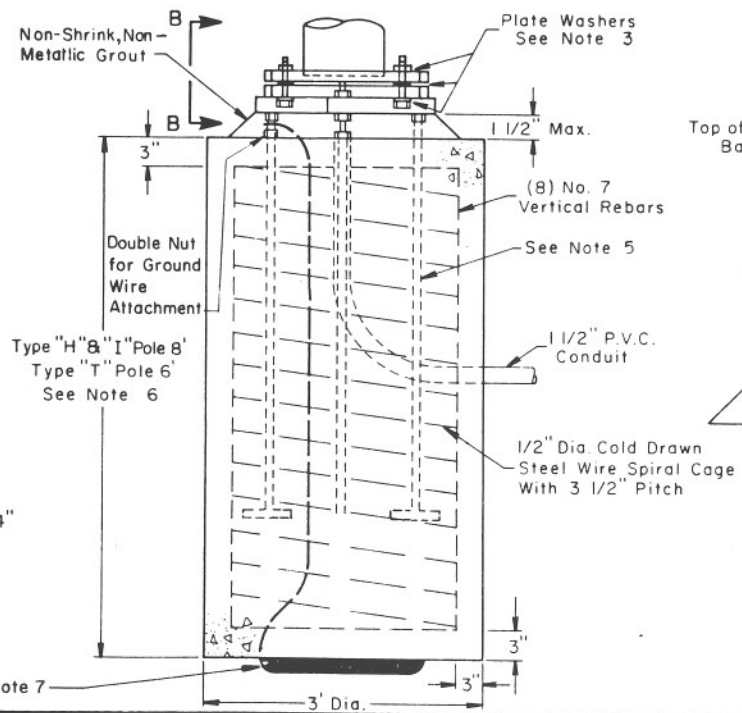
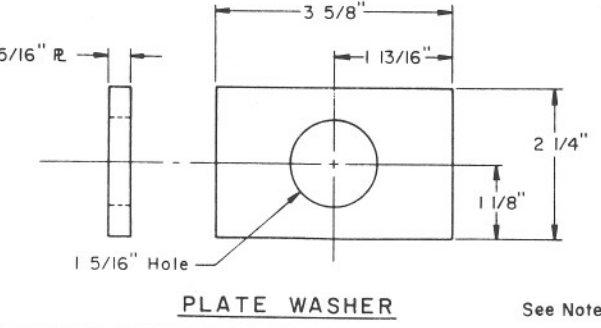
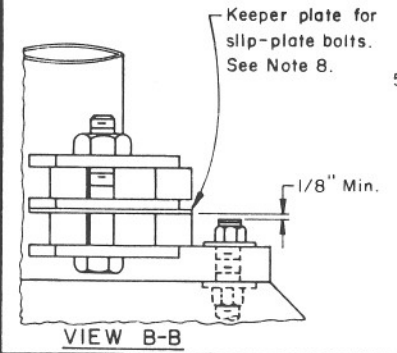
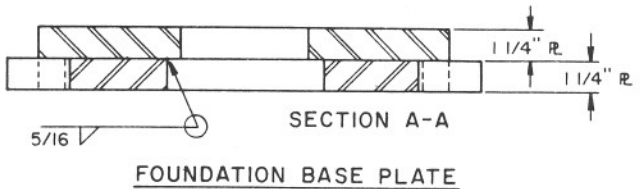


**DESIGN FOR LEFT HAND TRAFFIC  
RIGHT HAND TRAFFIC-ROTATE  
POLE 180°**

**NOTES:**

1. All materials and construction shall conform to the requirements of the Specifications.
2. Pole base plate and foundation plate shall be steel. See the Specifications. Contact surfaces shall have smooth finish, exposed edges shall be neatly rounded to 1/8" radius.
3. Plate washer, three required per bolt steel shall conform to A.S.T.M. A 441 or A 572 Grade 65 and electro-galvanized per A.S.T.M. B 633 and shall be flat.
4. Three 1 1/4" x 5 1/2" H.S. bolts with one heavy hex nut and shall conform to A.S.T.M. A 325 and electro-galvanized to A.S.T.M. B 633. Torque to 208 ft.-lbs. DO NOT OVER TIGHTEN.
5. See T.S. 4-20 detail "A" for anchor bolt details. The three bolts shall be high strength with four heavy duty nuts and two 2" O.D. flat washers per bolt. All shall be electro-galvanized to A.S.T.M. B 633.
6. The foundation hole shall be augered and concrete poured against undisturbed earth. Unstable soil may require deeper foundation. Class "S" (3000 PSI) concrete.
7. A 25' coil of No. 4 AWG bare copper conductor shall be installed before the concrete is poured and connected to pole anchor bolt. Double nut bottom leveling nut for attachment.
8. A 28 gauge galvanized steel keeper plate shall be installed on the pole slip away base between the two slip plates. The keeper plate shall be the same size and shape as the slip away base except it shall have 1 1/2" Dia. holes in place of the slots for the anchor bolts.



DESIGN APPROVED <i>Earlie Brown</i> 7/24/85	STATE OF ARIZONA DEPARTMENT OF TRANSPORTATION DIVISION OF HIGHWAYS STANDARD DRAWINGS	REV 10-6-86
APPROVED FOR DISTRIBUTION <i>James A. Miller</i>	<b>SLIP-AWAY BASE FOR 40' — 50' POLES</b>	DRAWING NO T.S. 5-3