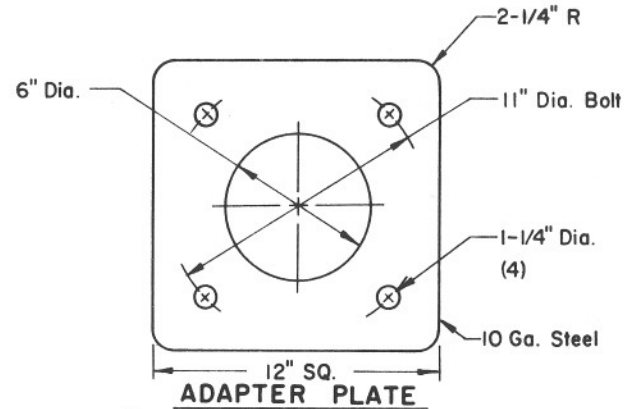
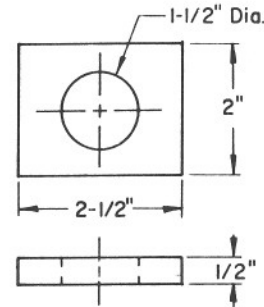


TOP VIEW



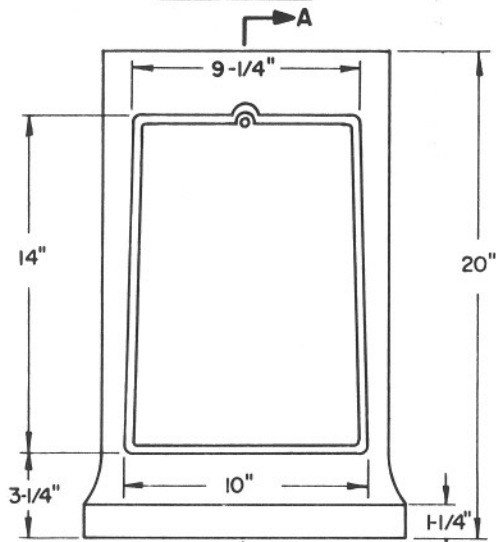
ADAPTER PLATE
(Installed Between Base & Pole When Pole Plate Holes Are Slotted)



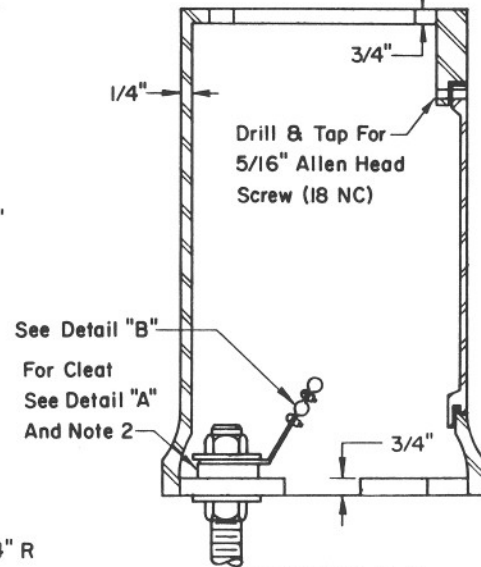
DETAIL "A"

NOTES:

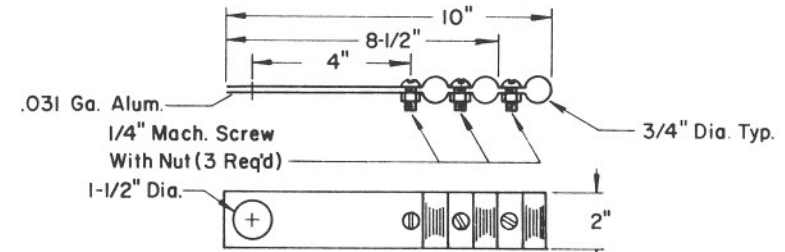
1. All materials and construction shall conform to the requirements of the Specifications.
2. Corner Anchor Cleat shall secure Break-Away Base to Foundation at each corner - 4 required.
3. Pole shall be mounted on Break-Away Base with 4-1" x 4" (BUNC) bolts, with 1 hex nut and 2 flat washers per bolt. All items shall be galv.
4. Use one Un-Fused Connector for each conductor in each Break-Away Base. For details see T.S. I-6.



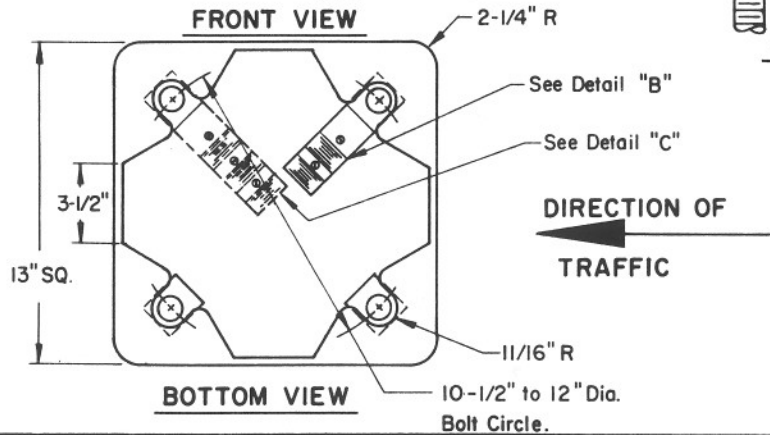
FRONT VIEW



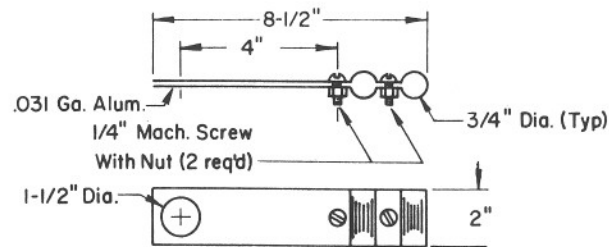
SECTION A-A



IN-LINE CONNECTOR CLAMP
FOR USE WITH PHOTO CELL ONLY
DETAIL "C"



BOTTOM VIEW



IN-LINE CONNECTOR CLAMP DETAIL "B"

| | | |
|--|---|--------------------------------|
| DESIGN APPROVED <i>Carla Brown</i> 7/24/80 | STATE OF ARIZONA DEPARTMENT OF TRANSPORTATION DIVISION OF HIGHWAYS STANDARD DRAWINGS | REV. |
| APPROVED FOR DISTRIBUTION <i>[Signature]</i> | BREAK-AWAY BASE FOR 30' POLE | DRAWING NO. T.S. 5-1 |