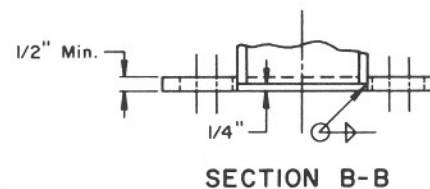
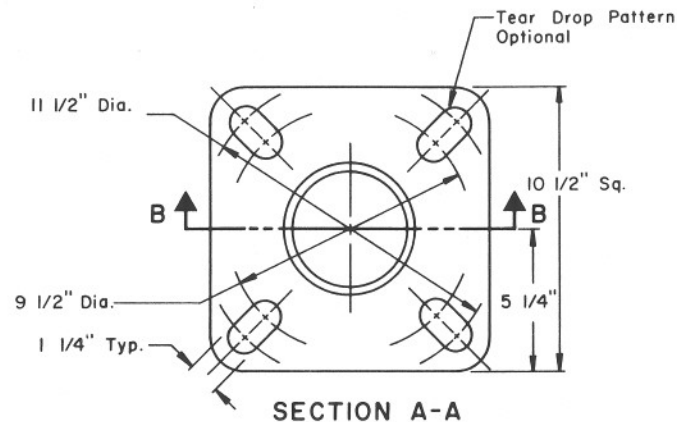
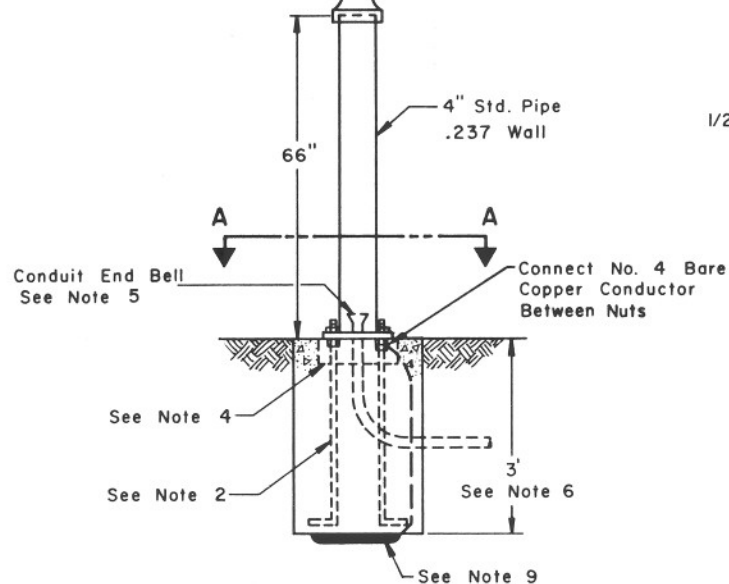
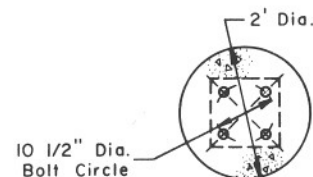


Removable Cast Iron Cap,
Secured With Set Screws



BASE PLATE DETAIL



FOUNDATION PLAN

NOTES:

1. All materials and construction shall conform to the requirements of the Specifications.
2. Anchor bolts shall be 1" x 36" x 4", with two hex nuts and two flat washers per bolt.
3. Anchor bolts shall project 2 3/4" above the foundation.
4. Block out for leveling nuts.
5. Conduit shall project a minimum of 2" and a maximum of 4" above the foundation. See plans for conduit size and location.
6. Unstable soil may require deeper foundation. See General Specifications.
7. See T.S. 11-1 for push button details.
8. See T.S. 4-18 for push button pole drilling details.
9. A 25' coil of No. 4 AWG bare copper conductor shall be installed before the concrete is poured and connected to anchor bolt.

DESIGN APPROVED <i>Carley Brown</i> 7/24/81	STATE OF ARIZONA DEPARTMENT OF TRANSPORTATION DIVISION OF HIGHWAYS STANDARD DRAWINGS	REV.
APPROVED FOR DISTRIBUTION <i>C. J. Fuld</i>	PEDESTRIAN PUSH BUTTON POST	DRAWING NO. T.S. 4-19