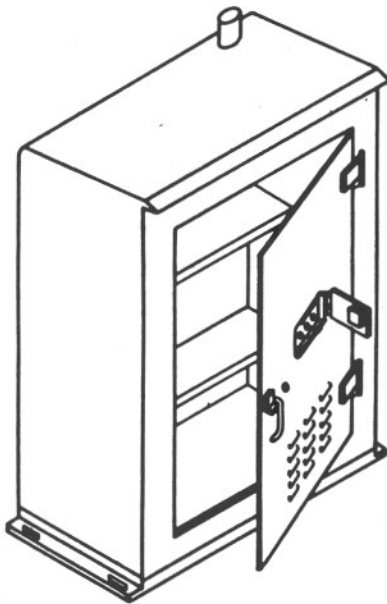
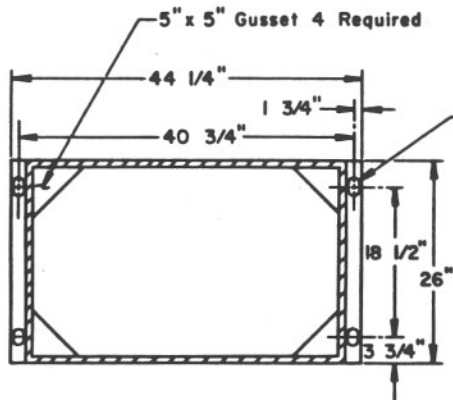
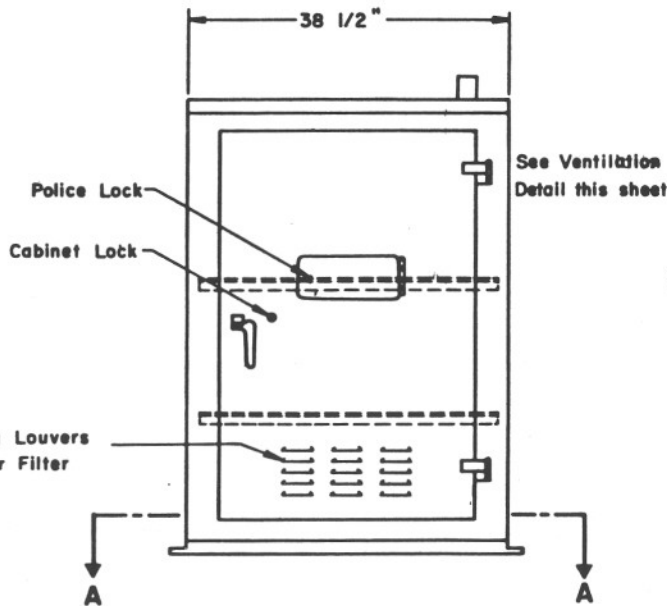


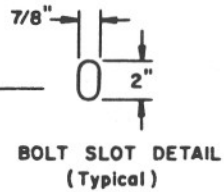
PLAN VIEW SHOWING
2 POSITION DOOR STOP



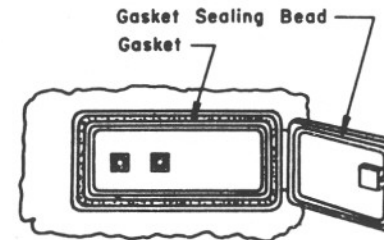
Filtered Ventilating Louvers
12" x 24" x 1" Air Filter



SECTION A-A



BOLT SLOT DETAIL
(Typical)

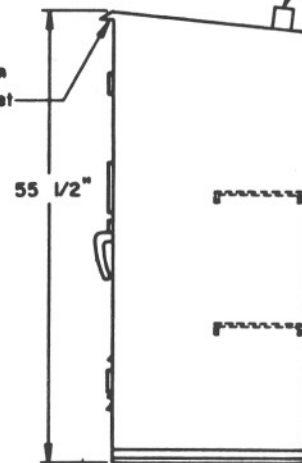


POLICE PANEL

NOTES:

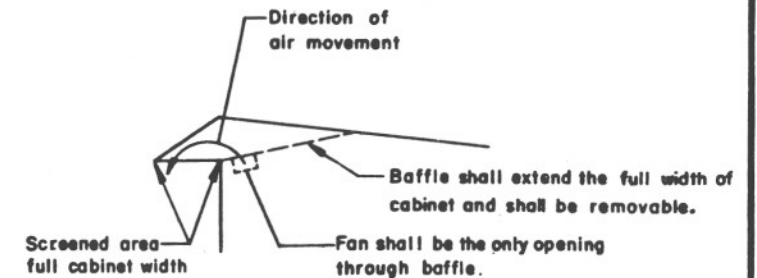
1. For construction requirements see Specifications.
2. For Cabinet Lock Details, see T.S. 3-10.
3. For painting, see Specifications.
4. Material, 10 gauge aluminum or 14 gauge steel.
5. The door shall be raintight and dustproof.
6. For size and position of anchor bolts see Foundation Detail T.S. 2-3. Anchor bolts shall be furnished with cabinet.
7. Shelves shall be removable and adjustable for vertical spacing. Shelves shall be fabricated from sheet steel.

Photo Electric Cell
Per T.S. 15-5 Mount "A"



NOTES: (continued)

8. Install a 20Amp., 120Volt coil N/O, 2-pole contactor.
9. Install a manual-off-photo lighting control switch as shown on T.S. 3-5.



NOTE:

All exhaust vents shall have screens.

VENTILATION DETAIL

DESIGN APPROVED <i>Joseph W. ...</i> 11/25/27	STATE OF ARIZONA DEPARTMENT OF TRANSPORTATION DIVISION OF HIGHWAYS STANDARD DRAWINGS	REV. 11-23-87
APPROVED FOR DISTRIBUTION <i>James R. Miller</i>	TYPE IV CONTROL CABINET	DRAWING NO. T.S. 3-12