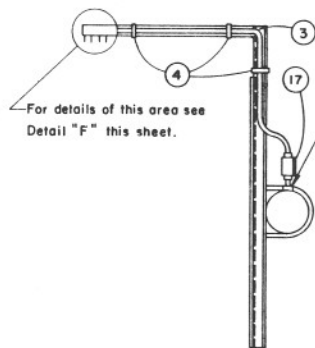
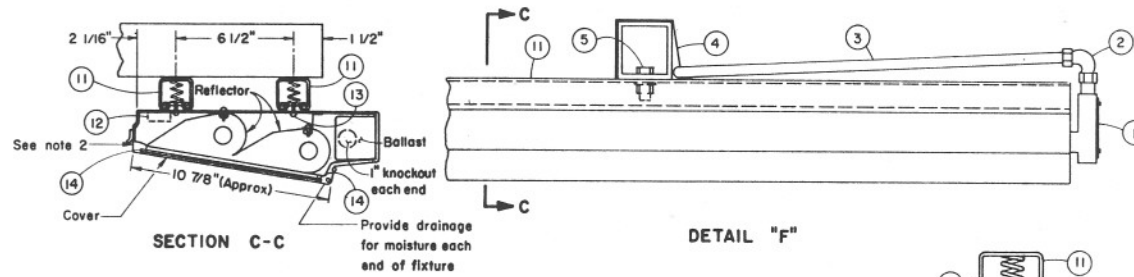


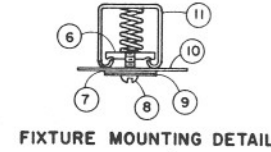
DETAIL "A"



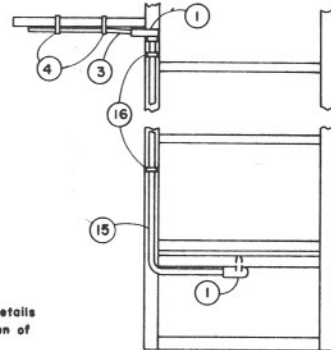
DETAIL "B"



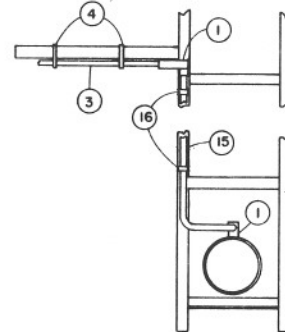
DETAIL "F"



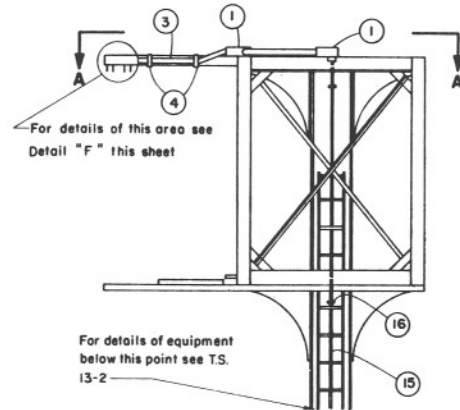
FITURE MOUNTING DETAIL



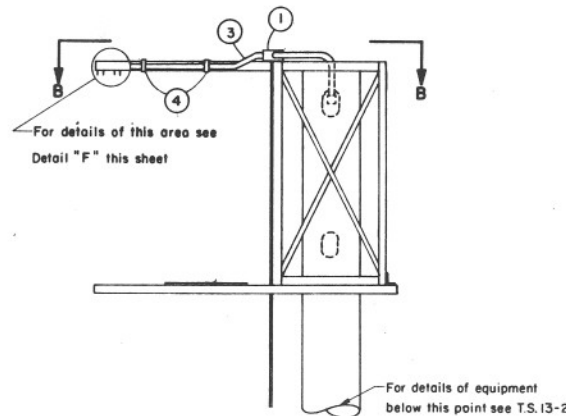
VIEW A-A



VIEW B-B



DETAIL "C"



DETAIL "D"

MATERIAL LIST	
ITEM	DESCRIPTION
1	1" X 1" L.B.
2	1" X 1" 90° angle connector
3	1" watertight flexible conduit with approved fittings.
4	Approved stainless steel banding materials.
5	1/2" dia. machine bolt, 2 flat washers, 1-1 1/2" neoprene washer, 1 lock washer and 1 hex nut.
6	1/4" X 3/4" X 1 3/8" cadmium plated nut to be grooved and shaped for use in 1 5/8" X 1 5/8"
7	12 ga. continuous slot channel with compression springs attached.
8	1 1/2" O.D. cadmium plated washer.
9	1/4"-20-1" cadmium plated screw.
10	1 1/2" neoprene washer.
11	1 3/4" O.D. cadmium plated washer.
12	1 5/8" X 1 5/8"-12 Ga. Continuous Slot Channel with 9/16" holes spaced 1 7/8" apart.
13	Channel shall be Galvanized to conform with ATSM A-123. The Channel shall run the full length of all sign panels.
14	4 barrier type terminal blocks required per fixture. Locate in center of fixture.
15	4-1/4" dia. mounting holes at 35" minimum longitudinal centers.
16	Dust and rain-tight gasket of compressible, closed cell, self skinned, neoprene sponges.
17	1" galv. steel conduit.
18	Drill and tap for 1/4" screw for mounting conduit clamps as required.
19	1" X 1" type "C" conduit

NOTES:

1. For installation procedures see Specifications.
2. Fixture shall be designed for mounting above the sign panel.

DESIGN APPROVED <i>Charles Bowman</i> 7/24/68	STATE OF ARIZONA DEPARTMENT OF TRANSPORTATION DIVISION OF HIGHWAYS STANDARD DRAWINGS	REV.
APPROVED FOR DISTRIBUTION <i>W.H. Field</i>	OVERHEAD SIGN LIGHTING & FLUORESCENT FIXTURE DETAIL	DRAWING NO. T.S. 13-1