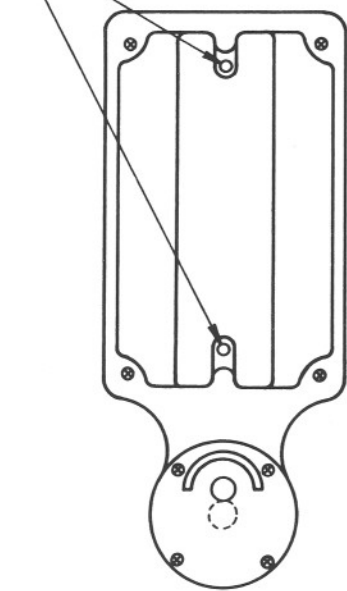
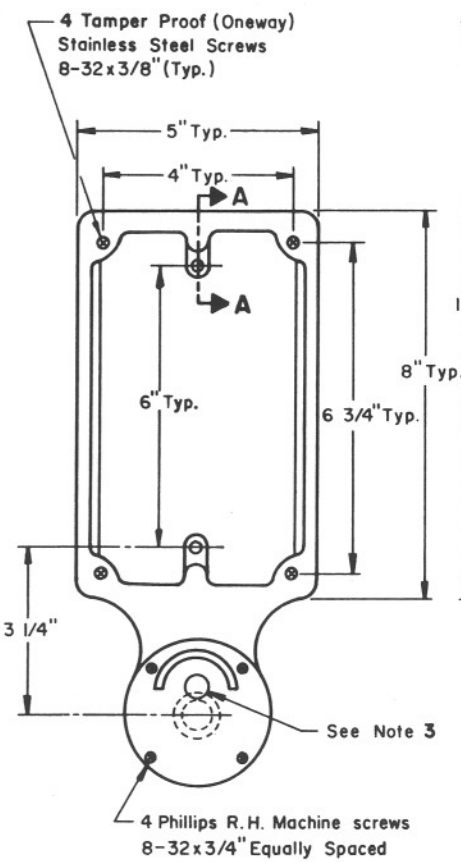


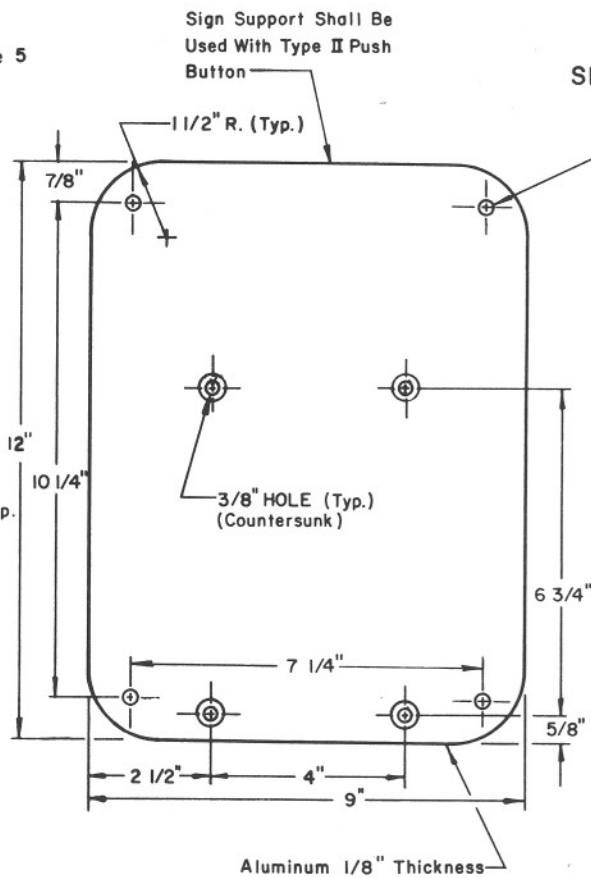
1/4" Holes For 1/4"-20x1" Slotted R.H. Brass Machine Screw See SECTION A-A (Typ.)



TYPE "A"



TYPE "B"



SIGN SUPPORT

NOTES:

1. The Type II push button shall be used only when specified.
2. Diameter of casting back to correspond with pole diameter.
3. Micro-Switch pushbutton with normal open contact.
4. Material shall be Aluminum Alloy.
5. For pedestrian sign detail see T.S.II-3 or T.S.II-4.
6. Type "A" for wood pole mounting only.
7. The push button sign shall be secured to the sign support with 4, 1/4" pop rivets.

DESIGN APPROVED <i>Charlie Brown</i> 1/24/65	STATE OF ARIZONA DEPARTMENT OF TRANSPORTATION DIVISION OF HIGHWAYS STANDARD DRAWINGS	REV.
APPROVED FOR DISTRIBUTION <i>C. J. Hud</i>	TYPE II PEDESTRIAN PUSH BUTTON	DRAWING NO. T.S. 11-2