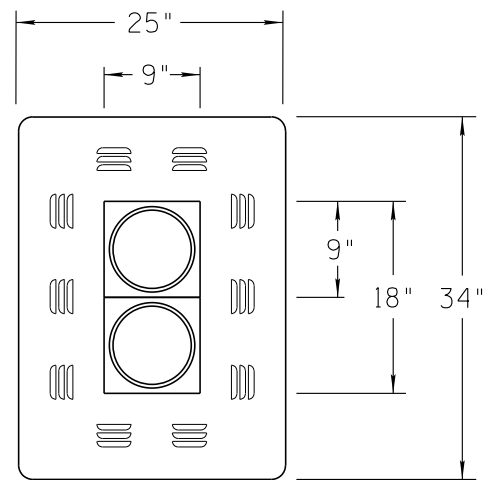
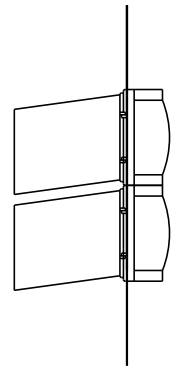
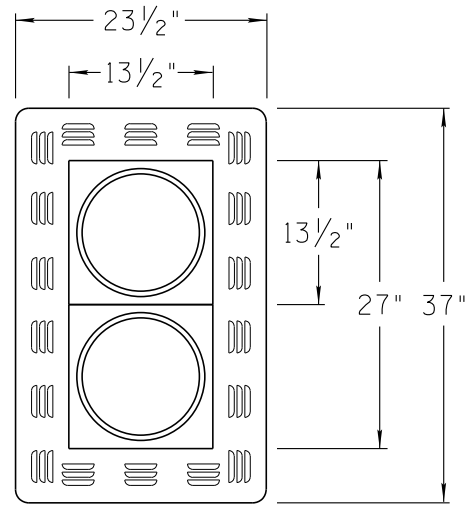
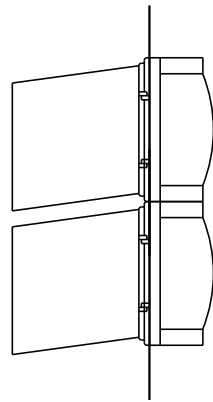


NO	DESCRIPTION OF REVISIONS	MADE BY	DATE	NO
1	2010 EDITION	C. COLE	03/10	3
2	2012 - RELOCATED TYPE A & D FACE TO T.S. 8-5, REVISED NOTES	C. COLE	01/12	4
	DESCRIPTION OF REVISIONS	MADE BY	DATE	



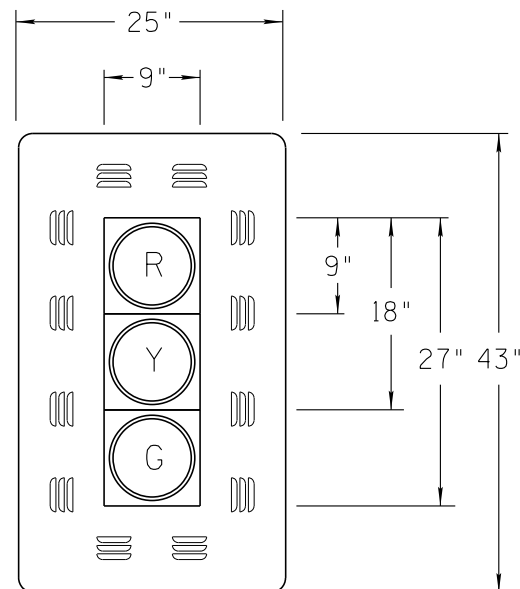
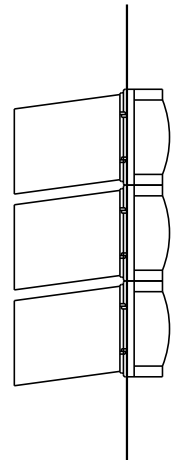
TYPE "B"
(Indication Color
Varies, See Plans)



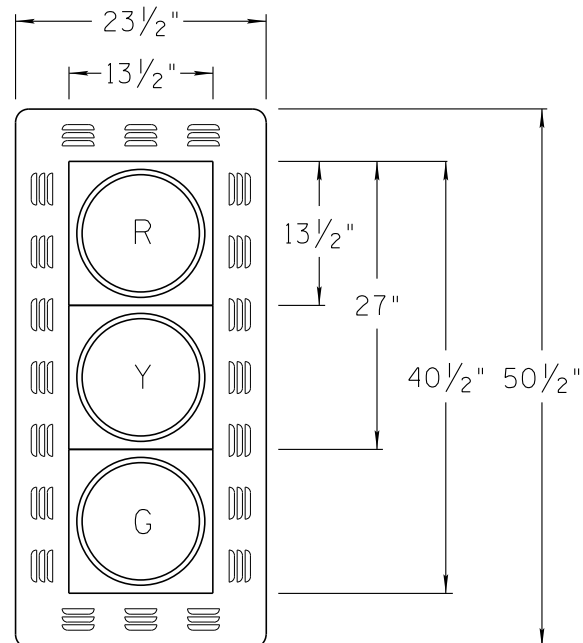
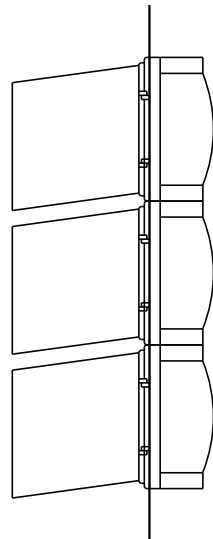
TYPE "E"
(Indication Color
Varies, See Plans)

NOTES:

1. Type B & C signal face shall be 8-Inch Indications. All others shall be 12-inch indications.
2. Type C signal face shall not be used for any new construction projects on ADOT system.
3. 8- inch signal face indications shall normally only be used for flashers and ramp meters.
4. Variation between manufacturers are allowable if function and mountings remain interchangeable.
5. Ramp metering assemblies may be requested to have "tattle tell lights" See project plans or special provisions for details.
6. See T.S. 8-5 for flashing beacon signal face assemblies.
7. Plumbizer location can be changed to meet vertical clearances. (e.g. between the yellow and green section).

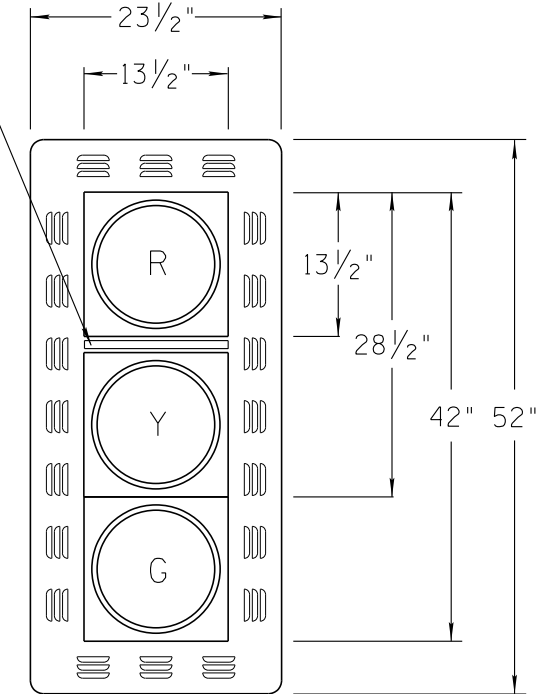
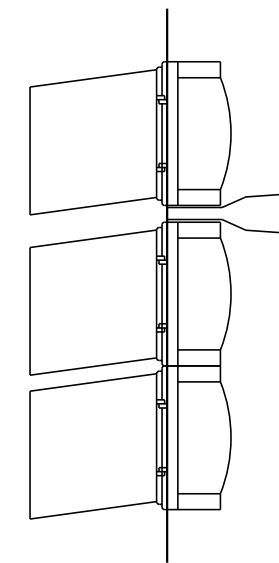


TYPE "C"
Not for use on ADOT system.
Only for use by local public agencies



TYPE "F"

1/2" Backplate
Plumbizer
Spacer



TYPE "F"
(With Plumbizer)

SEE NOTES ON T.S. 8-0

↑
↑
PLAN SYMBOLS

NOT TO SCALE

DESIGN APPROVED	ARIZONA DEPARTMENT OF TRANSPORTATION INTERMODAL TRANSPORTATION DIVISION TRAFFIC SIGNALS AND LIGHTING STANDARD DRAWINGS	REVISION	01/12
APPROVED FOR DISTRIBUTION		DRAWING NO.	T.S. 8-1
	VEHICLE TRAFFIC SIGNAL FACE ASSEMBLY	SHEET NO.	1 OF 1