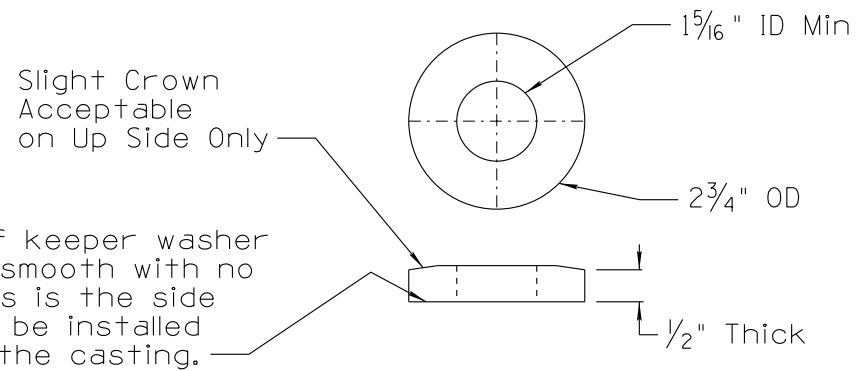


DATE: _____ MADE BY: _____ NO. 3 4 DESCRIPTION OF REVISIONS: _____ DATE: 03/10 12/12 MADE BY: C. COLE L. LOPEZ NO. 1 2010 EDITION 2 LABELING EDITS

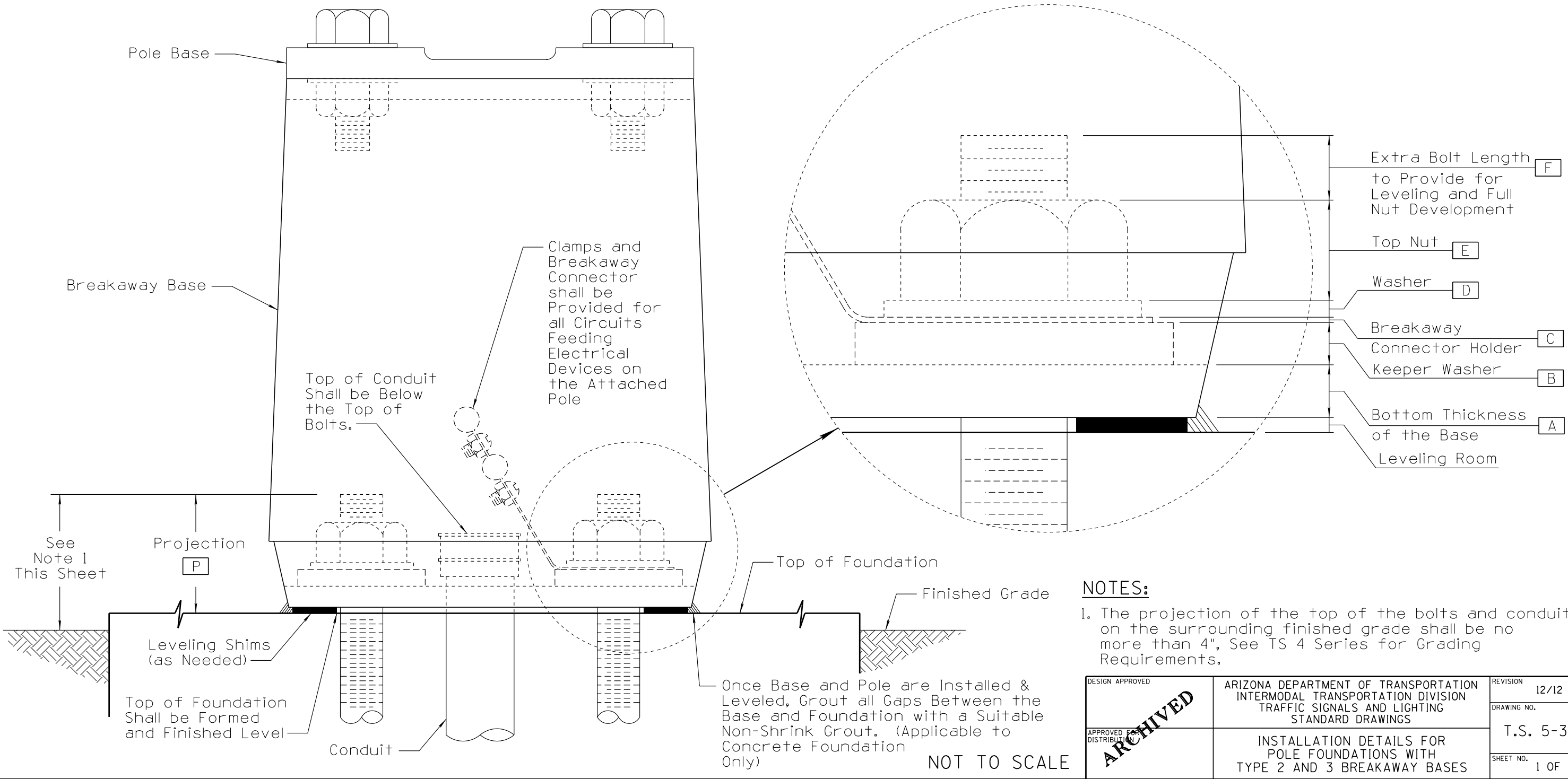


Bottom portion of keeper washer must be flat and smooth with no imperfections. This is the side of the washer to be installed face down inside the casting.

SPECIAL STEEL BREAKAWAY BASE KEEPER WASHER DETAIL

Base Type	A	B	C	D	E	* Total Needed	F	Maximum Projection P
Type 2	5/8" (.62")	1/2"	1/16"	3/16"	1 3/16"	2 9/16"	1 5/16" Max	3 1/2"
Type 3	3/4" (.75")	1/2"	1/16"	3/16"	1 3/16"	2 11/16"	1 3/16" Max	3 1/2"

* Does not include extra bolt length to provide room for leveling. A minimum of 1/2" extra bolt length shall be provided for leveling room.



NOTES:
1. The projection of the top of the bolts and conduit on the surrounding finished grade shall be no more than 4". See TS 4 Series for Grading Requirements.

DESIGN APPROVED	ARIZONA DEPARTMENT OF TRANSPORTATION INTERMODAL TRANSPORTATION DIVISION TRAFFIC SIGNALS AND LIGHTING STANDARD DRAWINGS	REVISION 12/12
APPROVED FOR DISTRIBUTION	INSTALLATION DETAILS FOR POLE FOUNDATIONS WITH TYPE 2 AND 3 BREAKAWAY BASES	DRAWING NO. T.S. 5-3
		SHEET NO. 1 OF 1