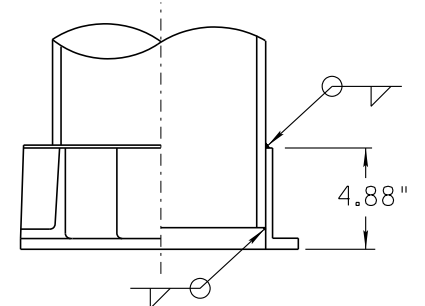
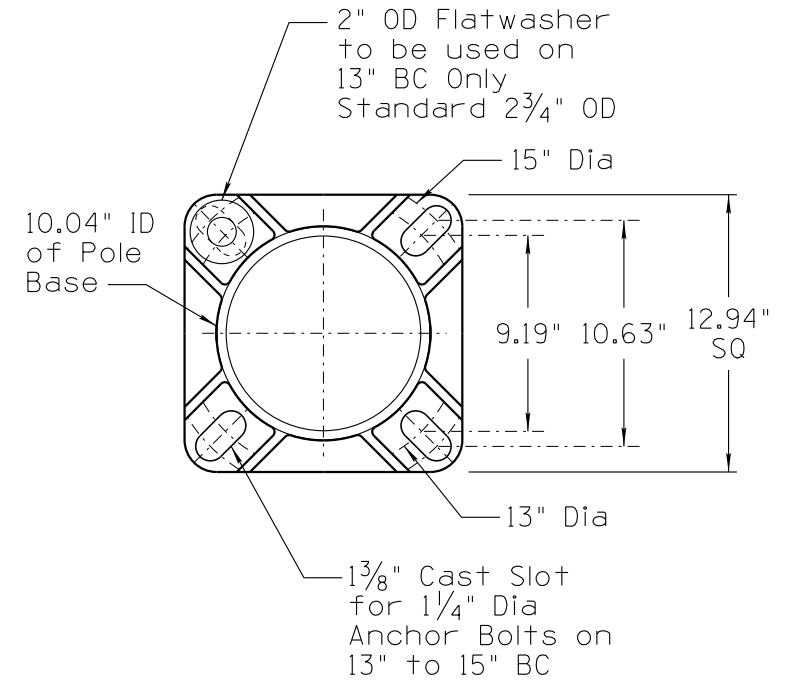
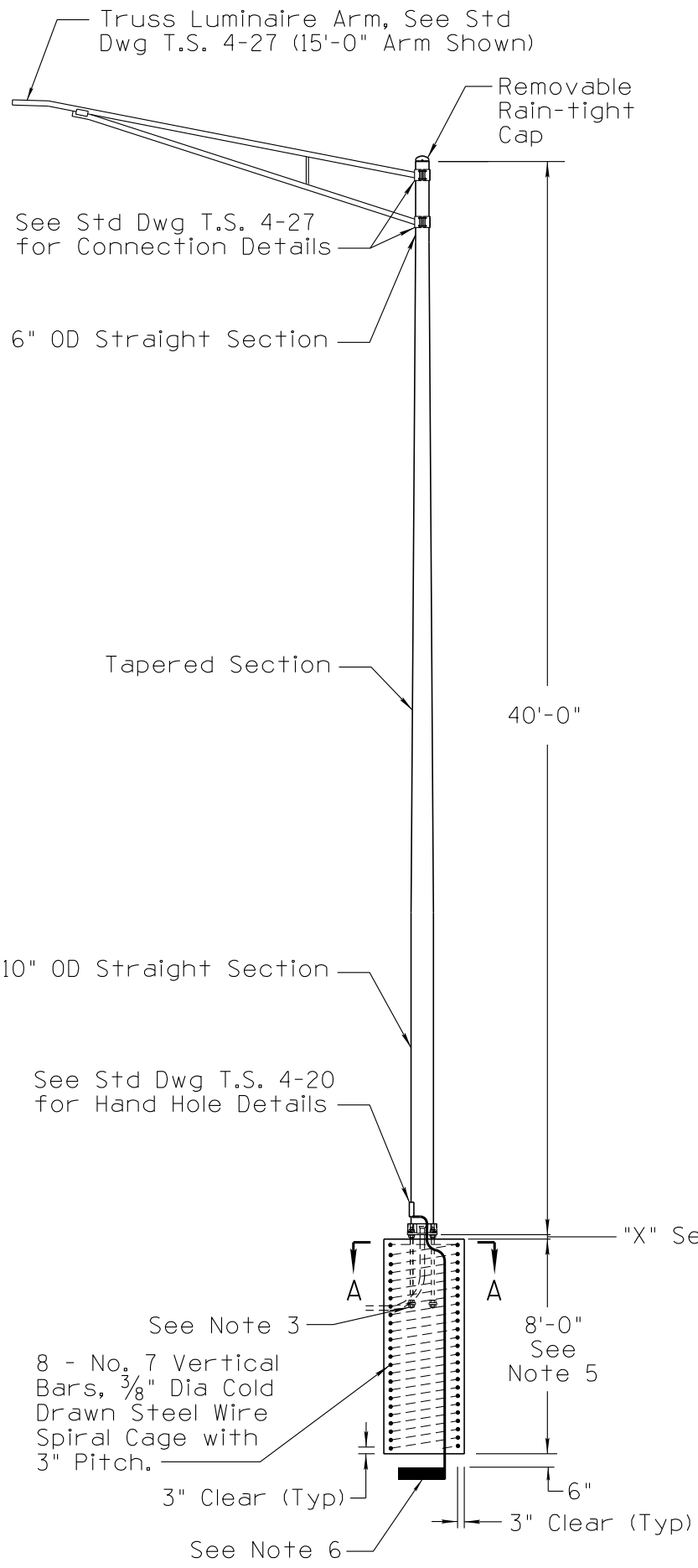
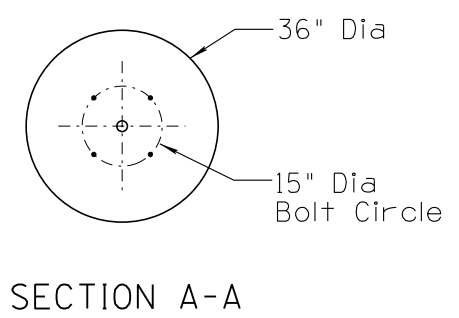


NO	EDITION	REVISIONS	DATE	MADE BY
1	2010	1	03/10	C. COLE
2	REVISED	NOTES AND DETAIL CALLOUTS.	10/13	L. LOPEZ

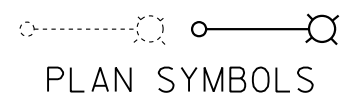


CAST ALUMINUM POLE BASE
HALF SECTION AND ELEVATION



NOTES:

1. All materials and construction shall conform to the requirements of the Standard Specifications.
2. Pole shall comply with 1994 AASHTO loading requirements in the Standard Specifications for Structural Supports for Highway Signs, Luminaires, and Traffic Signals.
3. See Std Dwg T.S. 4-23 for anchor bolt details.
4. The foundation hole shall be augered and Class "S" (3000 psi) concrete, poured against undisturbed compacted earth.
5. Unstable soil and/or a steep slope may require a deeper foundation. See Standard Specifications.
6. A 25 ft coil of #4 AWG bare copper conductor or a 14 inch square copper ground plate shall be installed before the concrete is poured and connected to pole grounding lug in the hand hole. The ground or coil shall be covered with 6 inches of fill.
7. Pole is suitable for use with a single luminaire that has a maximum weight of 55 pounds and a projected area of 1.6 square feet.
8. The Length of straight and tapered sections on the pole shaft will vary between manufacturers.
9. Once the pole installation is completed the open space between the base plate and foundation shall be grouted.
10. If pole foundation is within or adjacent to sidewalk, top of pole foundation shall be flush with the abutting or adjacent sidewalk.
11. All dimensions are nominal.



DESIGN APPROVED	ARIZONA DEPARTMENT OF TRANSPORTATION INTERMODAL TRANSPORTATION DIVISION TRAFFIC SIGNALS AND LIGHTING STANDARD DRAWINGS	REVISION	10/13
APPROVED FOR DISTRIBUTION		DRAWING NO.	T.S. 4-6
ALUMINUM TYPE "H" POLE		SHEET NO.	1 OF 1

NOT TO SCALE