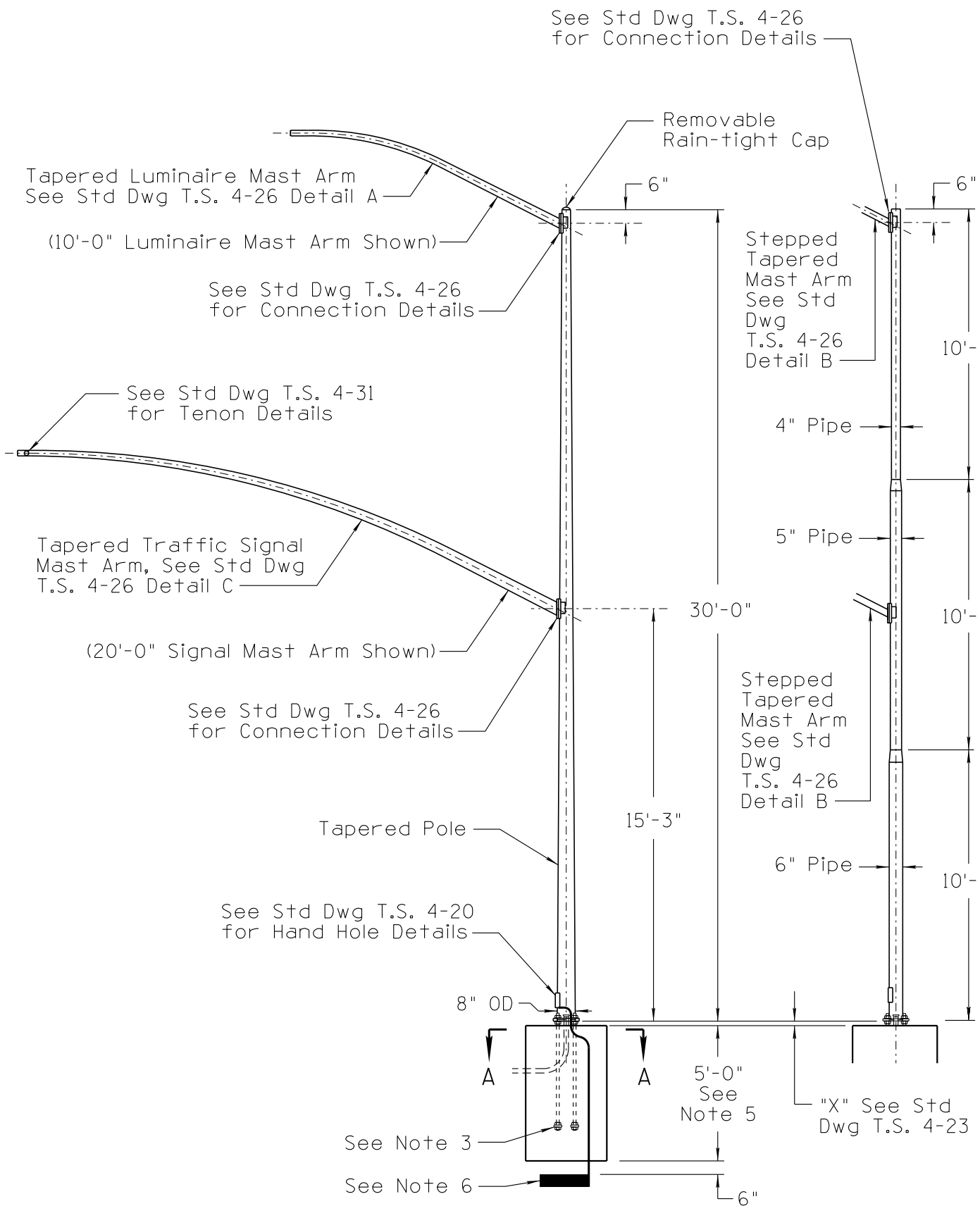


NO	DATE	MADE BY	DESCRIPTION OF REVISIONS
1	03/10	C. COLE	2010 EDITION
2	10/13	L. LOPEZ	REVISED NOTES AND DETAIL CALLOUTS.

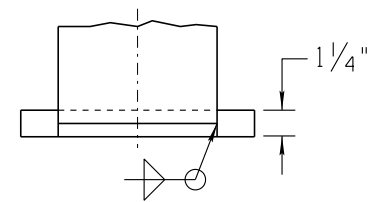


**NOTES:**

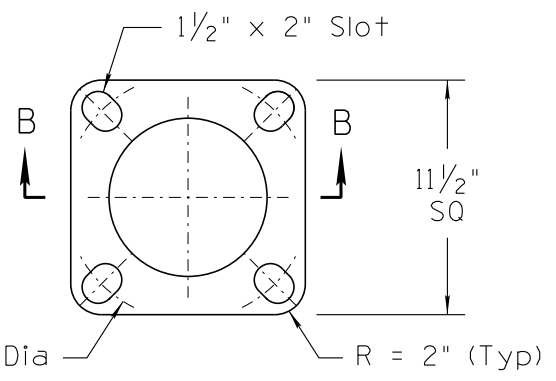
- All materials and construction shall conform to the requirements of the Standard Specifications.
- Pole shall comply with 1994 AASHTO loading requirements in the Standard Specifications for Structural Supports for Highway Signs, Luminaires, and Traffic Signals.
- See Std Dwg T.S. 4-23 for anchor bolt details.
- The foundation hole shall be augered and Class "S" (3000 psi) concrete, poured against undisturbed compacted earth.
- Unstable soil and/or a steep slope may require a deeper foundation. See Standard Specifications.
- A 25 ft coil of #4 AWG bare copper conductor or a 14 inch square copper ground plate shall be installed before the concrete is poured and connected to pole grounding lug in the hand hole. The ground or coil shall be covered with 6 inches of fill.
- For inboard tenon, when specified, see tenon detail on Std Dwg T.S. 9-1.
- Pole may have a continuous taper or step taper.
- This pole can be used with a 12'-0", 15'-0", 18'-0" or 20'-0" signal mast arm and a 10'-0" Luminaire mast arm.
- Once the pole installation is completed the open space between the base plate and foundation shall be grouted.
- If pole foundation is within or adjacent to sidewalk, top of pole foundation shall be flush with the abutting or adjacent sidewalk.
- All dimensions are nominal.

**SPECIAL NOTE:**

- This Traffic Signal Pole is for special applications only, and must be approved for design use by ADOT Traffic Engineering.

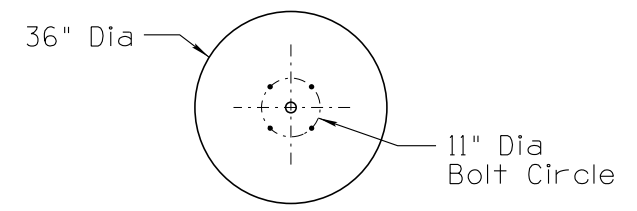


**SECTION B-B**  
(Bolt Slots Not Shown)

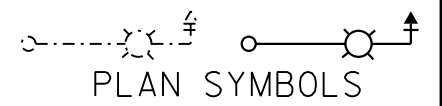


**BASE PLATE DETAIL**

NOT TO SCALE



**SECTION A-A**



DESIGN APPROVED	ARIZONA DEPARTMENT OF TRANSPORTATION INTERMODAL TRANSPORTATION DIVISION TRAFFIC SIGNALS AND LIGHTING STANDARD DRAWINGS	REVISION	10/13
APPROVED FOR DISTRIBUTION		DRAWING NO.	T.S. 4-3
TYPE "F" POLE		SHEET NO.	1 OF 1