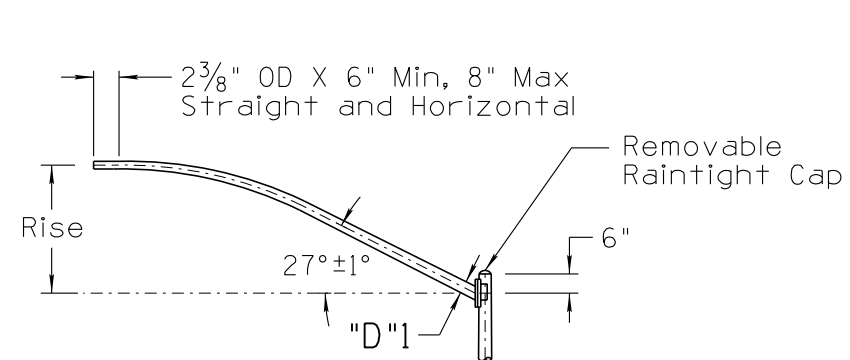
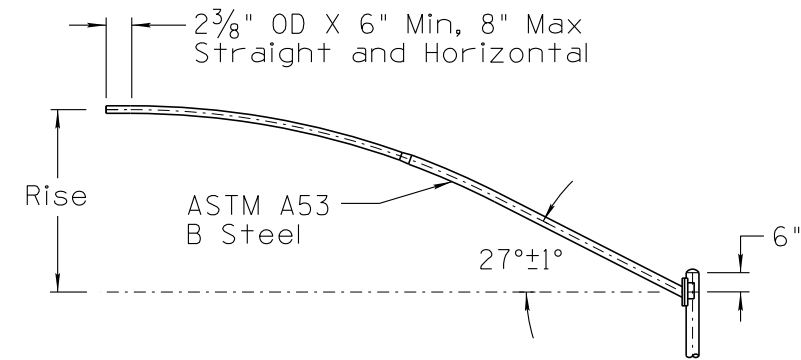


DATE: 03/10  
 MADE BY: C. COLE  
 NO: 3  
 DESCRIPTION OF REVISIONS:  
 1 2010 EDITION  
 2



Arm Length	Rise	"D1" Min	Pole Application
6'	2'-0"	3 1/4"	F, G, R, Q, W
8'	2'-6"	3 1/2"	
10'	3'-4"	3 13/16"	
12'	4'-3"	4 1/16"	
15'	4'-9"	4 1/2"	
18'	5'-9"	4 15/16"	
20'	5'-9"	5 3/16"	

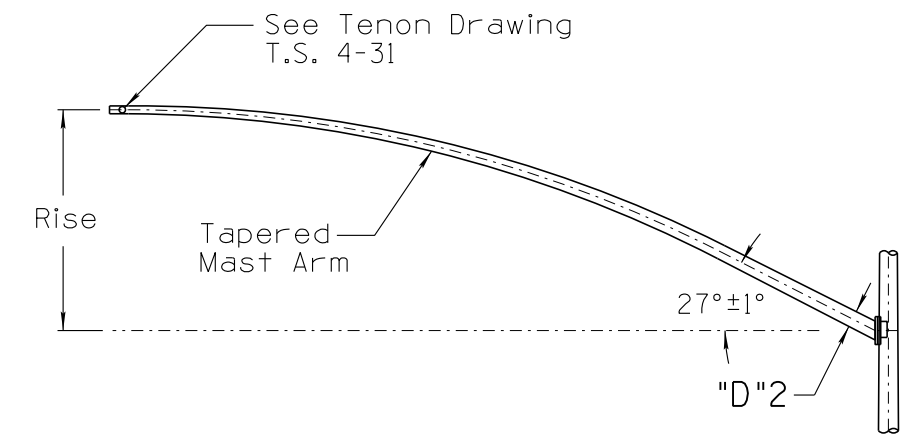
DETAIL A  
 (Tapered Luminaire Mast Arm)



Arm Length	Rise	Nominal Pipe Size Thickness and Length	Pole Application
6'	2'-0"	2.0" x .154" x 6'-0"	G
8'	2'-6"	2.0" x .154" x 8'-0"	
10'	3'-8"	2.5" x .120" x 10'-0"	
* 12'	4'-3"	2.5" x .120" x 12'-0"	G, E, F
* 15'	4'-9"	2.5"x.120"x7'-0" & 3.0"x.156"x8'-0"	
* 18'	5'-9"	2.5"x.120"x9'-0" & 3.0"x.156"x9'-0"	
* 20'	5'-9"	2.5"x.120"x10'-0" & 3.0"x.156"x10'-0"	

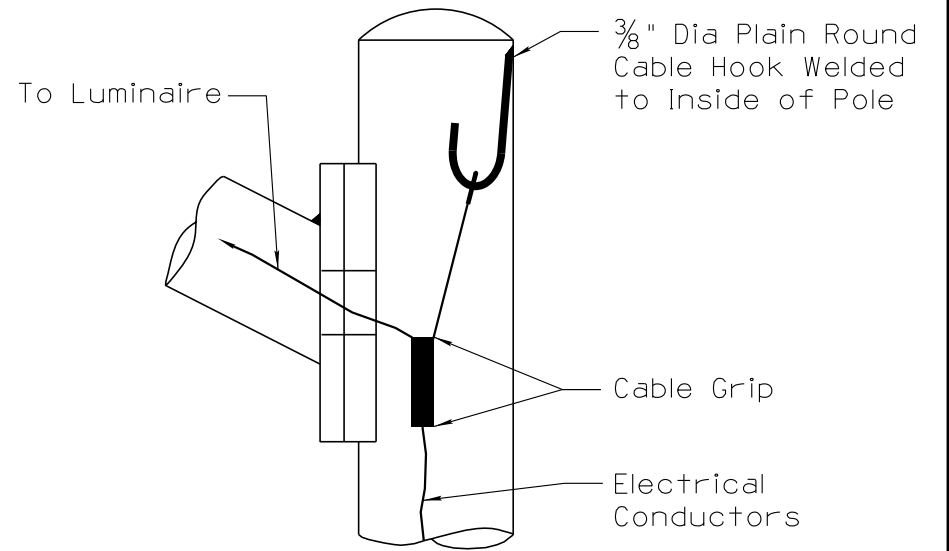
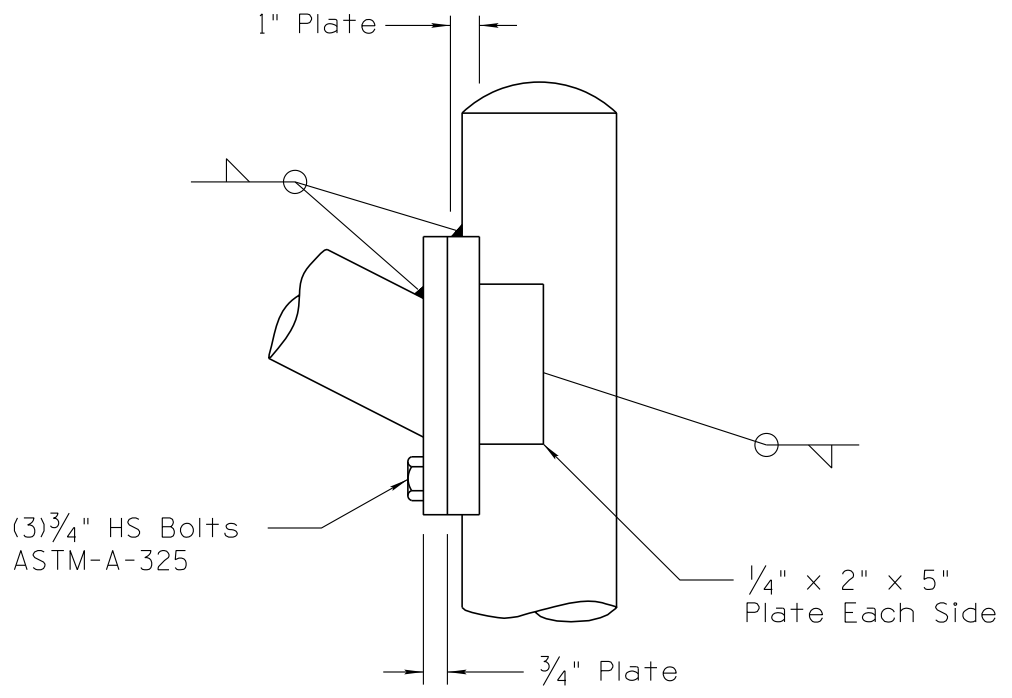
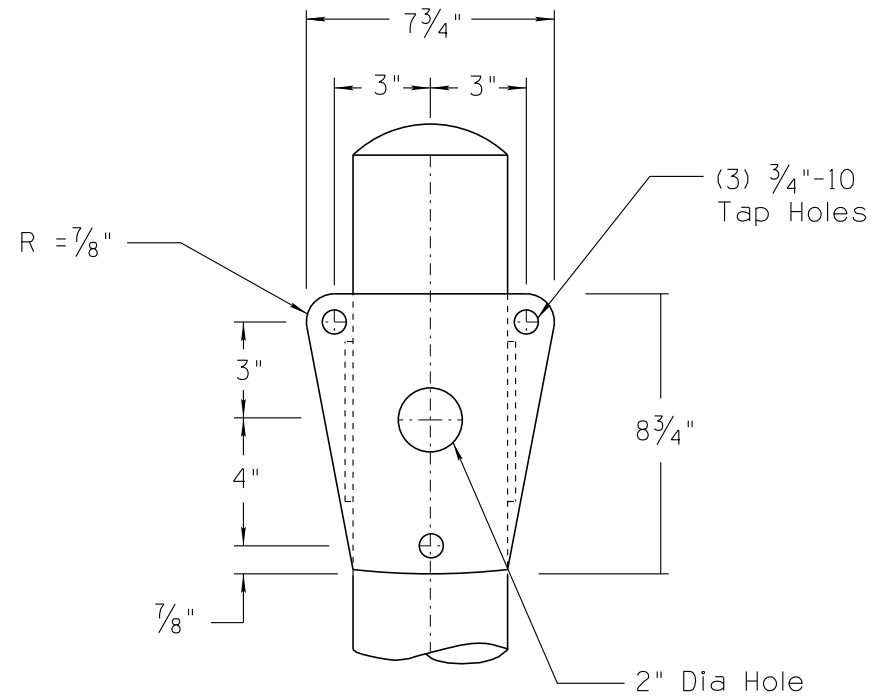
\* (Signal Mast Arm for Stepped Tapered Type E & F Poles)

DETAIL B  
 (Stepped Tapered Luminaire & Signal Mast Arm)



Arm Length	Rise	"D2" Min	Pole Application
12'	4'-3"	4 13/16"	E & F
15'	4'-9"	5 1/4"	
18'	5'-9"	5 11/16"	
20'	5'-9"	5 15/16"	

DETAIL C  
 (Tapered Signal Mast Arm)



MAST ARM CONNECTION DETAIL

NOT TO SCALE

DESIGN APPROVED	ARIZONA DEPARTMENT OF TRANSPORTATION INTERMODAL TRANSPORTATION DIVISION TRAFFIC SIGNALS AND LIGHTING STANDARD DRAWINGS	REVISION 03/10
APPROVED FOR DISTRIBUTION		DRAWING NO. T.S. 4-26
STEEL MAST ARM DETAILS LUMINAIRE AND SIGNAL ARMS TO 20'		SHEET NO. 1 OF 1