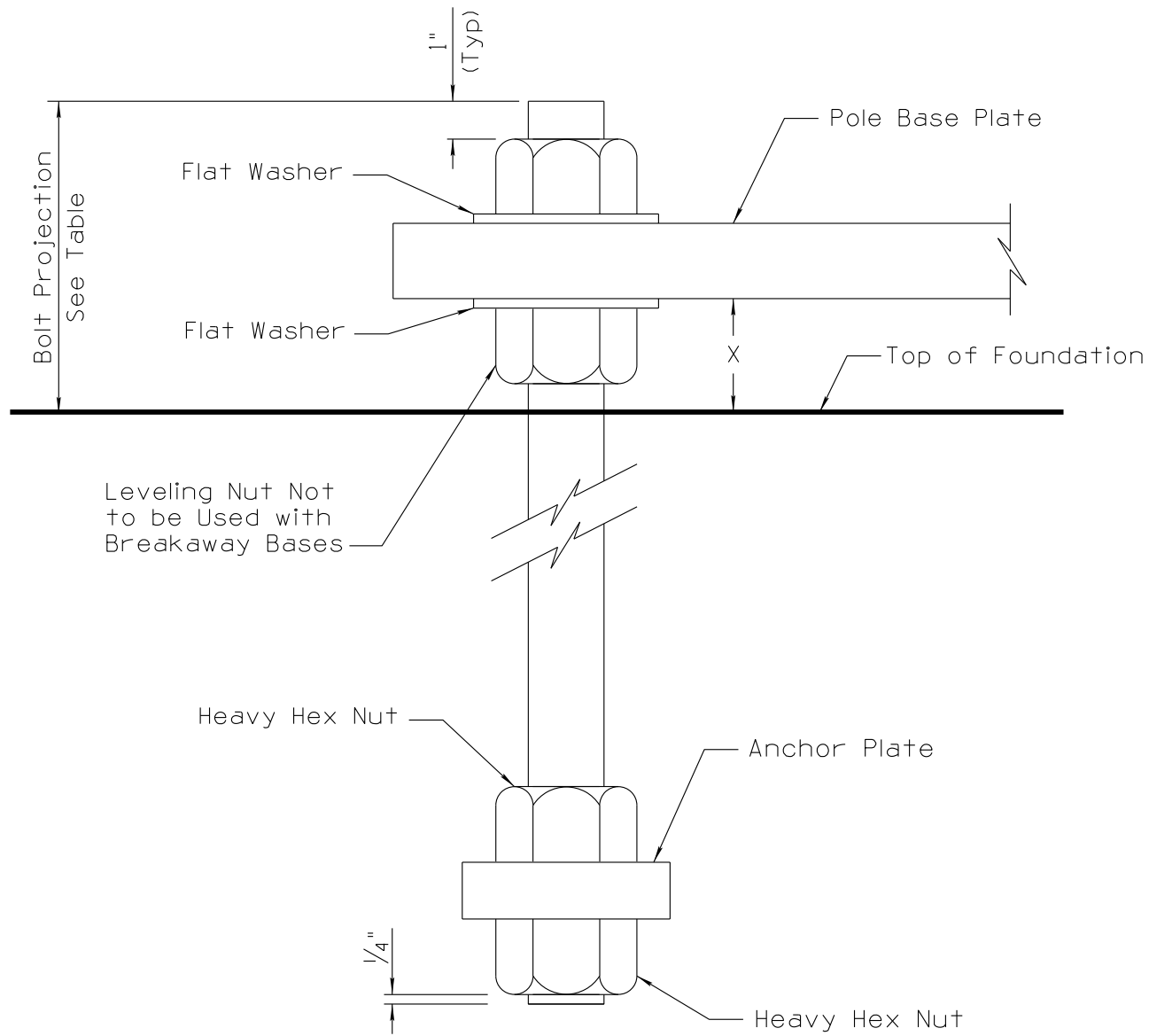


NO	DESCRIPTION OF REVISIONS	DATE	MADE BY
1	2010 EDITION	03/10	C. COLE
2	REVISED TABLE DIMENSIONS FOR STD DRAWING T.S.4-22. ADDED NOTE 5. DRAFTING REVISIONS.	10/13	L. LOPEZ
3			
4			



ANCHOR BOLT DETAIL
(For Standard Base Applications)

STEEL POLE BASE PLATE THICKNESS	
POLE TYPE	THICKNESS
A and Ped Post	1/2" Min
E	1" - 1 1/4"
G, S	1"
F, T	1 1/4"
J	1 3/4"
K, Q, R, V & W	2"
U Elliptical	3"
U Square	1 1/2" - 2"

NOTES:

- All anchor bolts shall be ASTM F1554 grade 55 steel.
- All anchor bolts, nuts and washers shall be fully galvanized per ASTM A153.
- Each anchor bolt shall have four hex nuts and two flat washers, all to be furnished with pole.
- See Std Dwg T.S. 5 series for additional foundation and anchor bolt details, and requirements for breakaway bases.
- Washers with dimensions conforming to ASTM F436 may be used in lieu of the sizes in the table.

STANDARD DWG		ANCHOR BOLT WITH PLATE					
POLE TYPE	DWG No.	NOMINAL DIAMETER (inches)	FLAT WASHER THICKNESS	TOTAL LENGTH (inches)	SIZE OF ANCHOR PLATE (inches)	PROJECTION ABOVE FOUNDATION	X
"A"	T.S.4-1	1"	1/8"	35"	3/4" x 2 3/4" x 2 3/4"	4 5/8" *	2"
"E"	T.S.4-2	1 1/4"	1/8"	52"	7/8" x 3 1/2" x 3 1/2"	5 5/16"	2"
"F"	T.S.4-3	1 1/4"	1/8"	52"	7/8" x 3 1/2" x 3 1/2"	5 5/16"	2"
"G"	T.S.4-4	1 1/4"	1/8"	52"	7/8" x 3 1/2" x 3 1/2"	5 5/16" *	2"
"G" (Alum.)	T.S.4-5	1 1/4"	1/8"	36"	7/8" x 3 1/2" x 3 1/2"	5 5/16" *	2"
"H" (Alum.)	T.S.4-6	1 1/4"	1/8"	36"	7/8" x 3 1/2" x 3 1/2"	5 1/4" *	2"
"I" (Alum.)	T.S.4-7	1 1/4"	1/8"	36"	7/8" x 3 1/2" x 3 1/2"	5 1/4" *	2"
"J"	T.S.4-8	2"	1/4"	70"	1 1/2" x 5 1/2" x 5 1/2"	8"	3"
"K"	T.S.4-9	2"	1/4"	70"	1 1/2" x 5 1/2" x 5 1/2"	8 1/4"	3"
"Q"	T.S.4-10	2"	1/4"	70"	1 1/2" x 5 1/2" x 5 1/2"	8 1/4"	3"
"R"	T.S.4-11	2"	1/4"	70"	1 1/2" x 5 1/2" x 5 1/2"	8 1/4"	3"
"S"	T.S.4-12	1 1/4"	1/8"	52"	7/8" x 3 1/2" x 3 1/2"	5 5/16" *	2"
"S" (Alum.)	T.S.4-13	1 1/4"	1/8"	52"	7/8" x 3 1/2" x 3 1/2"	5 5/16" *	2"
"T"	T.S.4-14	1 1/4"	1/8"	52"	7/8" x 3 1/2" x 3 1/2"	5 5/16" *	2"
"T" (Alum.)	T.S.4-15	1 1/4"	1/8"	52"	7/8" x 3 1/2" x 3 1/2"	5 5/16" *	2"
"U"	T.S.4-16 T.S.4-17	1 1/2"	-	48"	See T.S. 4-16 See T.S. 4-17	See T.S. 4-17 Sheet 2 of 6	
"V"	T.S.4-18	2"	1/4"	70"	1 1/2" x 5 1/2" x 5 1/2"	8 1/4"	3"
"W"	T.S.4-19	2"	1/4"	70"	1 1/2" x 5 1/2" x 5 1/2"	8 1/4"	3"
PED Post Button or "PD"	T.S.4-22	3/4"	1/8"	24"	3/4" x 2 3/4" x 2 3/4"	4 5/8"	2"

* Does Not Apply to Breakaway Base Foundation Applications, Maximum Projection For these Applications is 3 1/2" above the foundation and 4" above the surrounding grade.

NOT TO SCALE

DESIGN APPROVED	ARIZONA DEPARTMENT OF TRANSPORTATION INTERMODAL TRANSPORTATION DIVISION TRAFFIC SIGNALS AND LIGHTING STANDARD DRAWINGS	REVISION	10/13
APPROVED FOR DISTRIBUTION		DRAWING NO.	T.S. 4-23
		SHEET NO.	1 OF 1