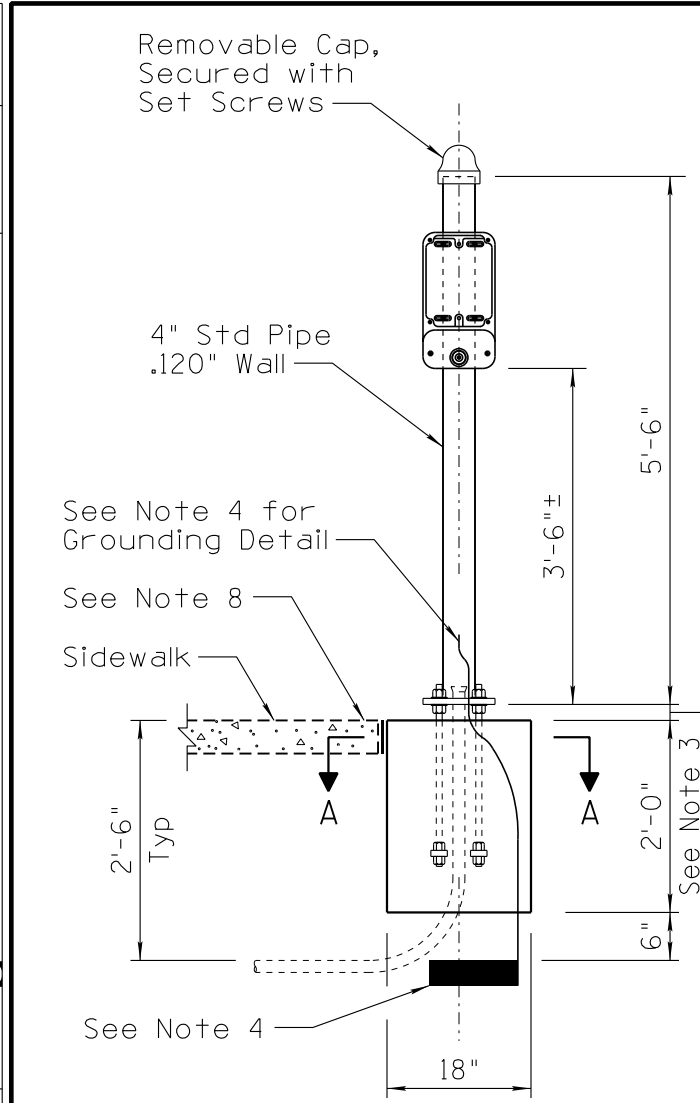
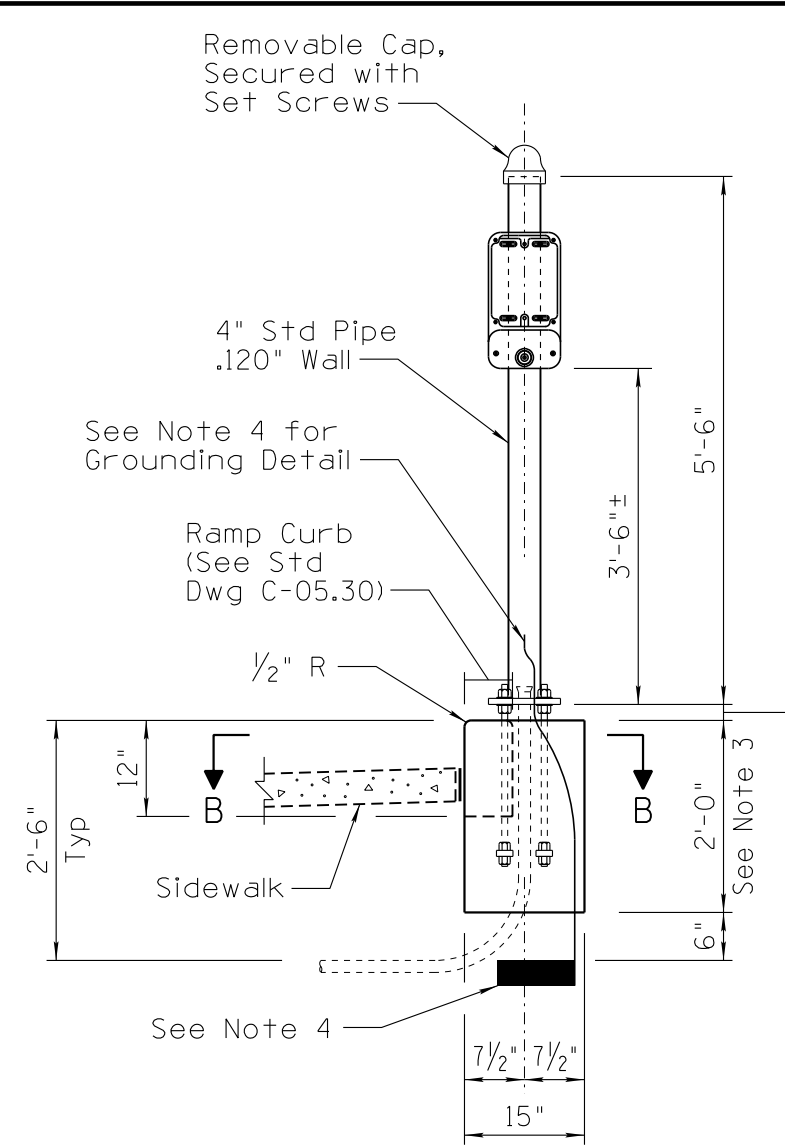


NO	DESCRIPTION OF REVISIONS	DATE	MADE BY
1	2010 EDITION	03/10	C. COLE
2	REVISED SECTION A-A & ADDED NOTE #10	12/12	L. LOPEZ
3	FOUNDATION AND POLE RE-DESIGN	03/10	C. COLE
4	FOUNDATION RE-DESIGN FOR CURB APPLICATIONS.	12/12	L. LOPEZ



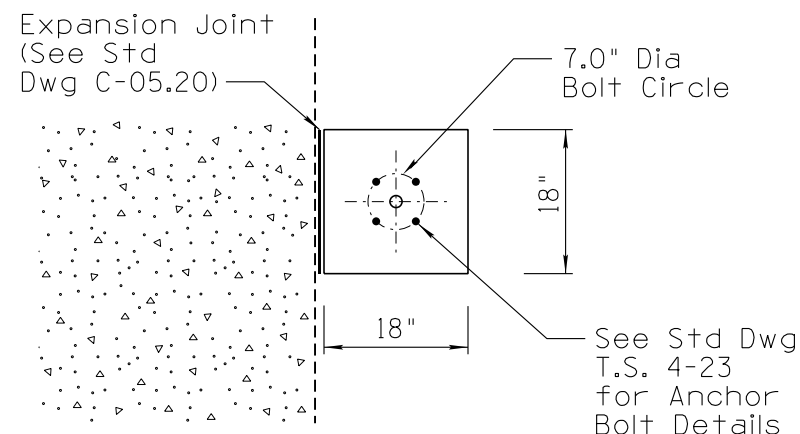
**ELEVATION**

(Adjacent to or in Sidewalk)

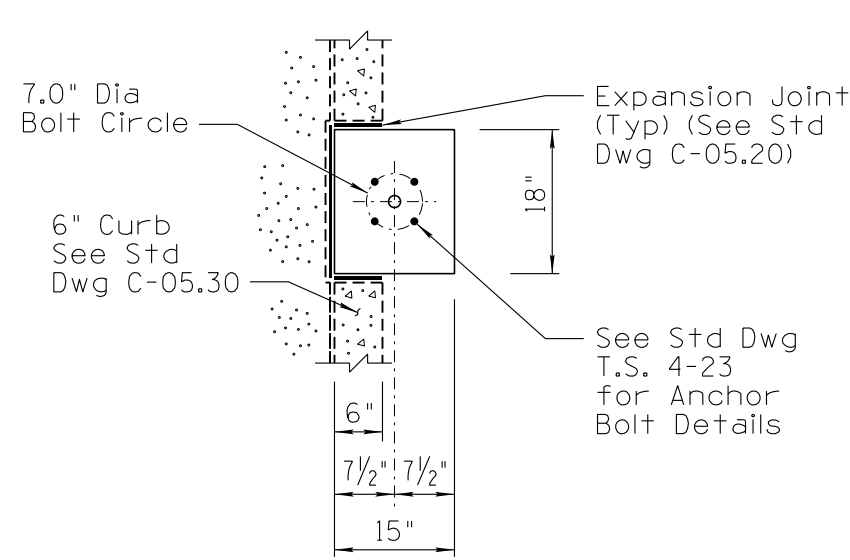


**ELEVATION**

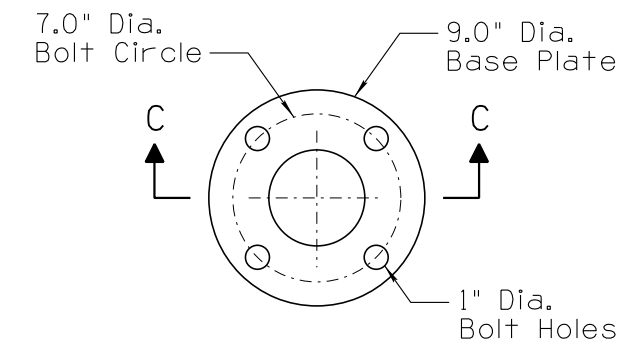
(In Line with Curb)



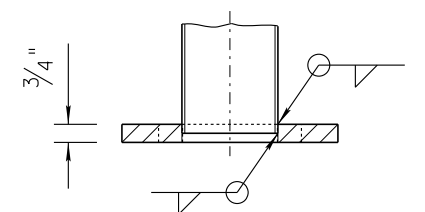
**SECTION A-A**



**SECTION B-B**



**BASE PLATE DETAIL**



**SECTION C-C**

**PLAN SYMBOLS**

**NOTES:**

1. All materials and construction shall conform to the requirements of the Standard Specifications.
2. The foundation hole shall be framed and Class "S" (3000 psi) concrete poured against undisturbed compacted earth.
3. Unstable soil may require a deeper foundation. See Standard Specifications.
4. A 25 ft coil of #4 AWG bare copper conductor or a 14 inch square copper ground plate shall be installed before the concrete is poured and connected under one of the nuts of the connecting bolts. The ground or coil shall be covered with 6 inches of fill.
5. See Std Dwg T.S. 11 Series for push button details.
6. See Std Dwg T.S. 4-21 for push button pole drilling details.
7. Once the pole installation is completed the open space between the base plate and foundation shall be grouted.
8. The top of the foundation shall be flush with the surface of the adjacent ramp, curb or sidewalk. See Construction Standard Drawing C-05.30.
9. All dimensions are nominal.

DESIGN APPROVED	ARIZONA DEPARTMENT OF TRANSPORTATION INTERMODAL TRANSPORTATION DIVISION TRAFFIC SIGNALS AND LIGHTING STANDARD DRAWINGS	REVISION	03/15
APPROVED FOR DISTRIBUTION		DRAWING NO.	T.S. 4-22
PEDESTRIAN PUSH BUTTON POST "TYPE PB POLE"		SHEET NO.	1 OF 1

NOT TO SCALE