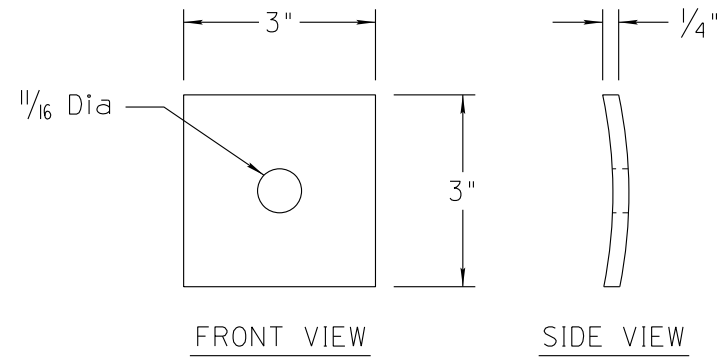
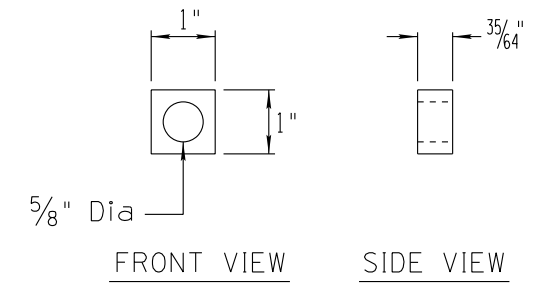


OVAL EYEBOLT LENGTH TABLE	
L	TL
8"	4"
10"	6"
12"	6"
14"	6"
16"	6"
18"	6"



SQUARE CURVED WASHER

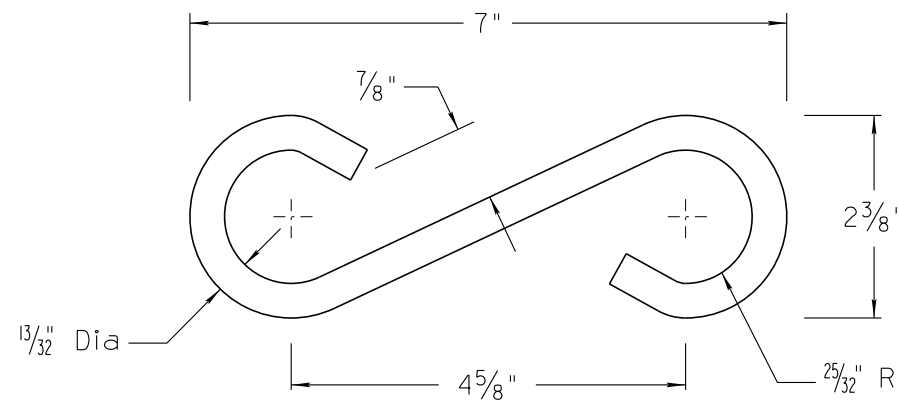


SQUARE NUT

NOTES:

1. Steel eyebolt shall meet ANSI C135.4, have a minimum breaking strength of 13,500 lbs, and be hot dip galvanized in accordance w/ASTM A153.
2. Steel square nut shall be ASTM A563.
3. Steel square curved washer shall be hot dip galvanized in accordance with ASTM A153.

WOOD POLE OVAL EYEBOLT w/ SQUARE NUT AND SQUARE CURVED WASHER
 (For use with Tether Wire Only)



STEEL AND WOOD POLE TETHER WIRE S-HOOK
 3/8" Round Mild ASTM A36 Galvanized

NOT TO SCALE

DESIGN APPROVED	ARIZONA DEPARTMENT OF TRANSPORTATION INTERMODAL TRANSPORTATION DIVISION TRAFFIC SIGNALS AND LIGHTING STANDARD DRAWINGS	REVISION 01/12
APPROVED FOR DISTRIBUTION		DRAWING NO. T.S. 15-1
SPAN WIRE SIGNALS AND LIGHTING TYPICAL DETAILS		SHEET NO. 6 OF 6