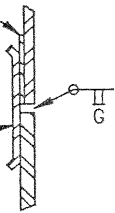


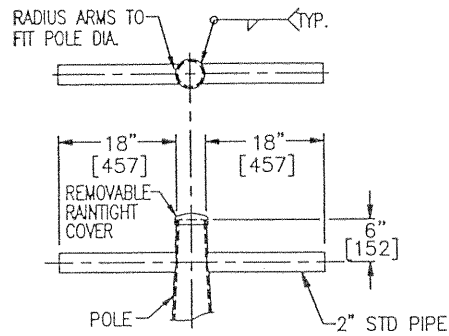
THICKNESS OF FILLER RING (IF REQUIRED) TO MATCH DIFFERENCE IN TAPERED TUBE THICKNESS x 1" [25] WIDE

.120" [3] THK (11 GAUGE) x 3" [76] WIDE BACK-UP RING



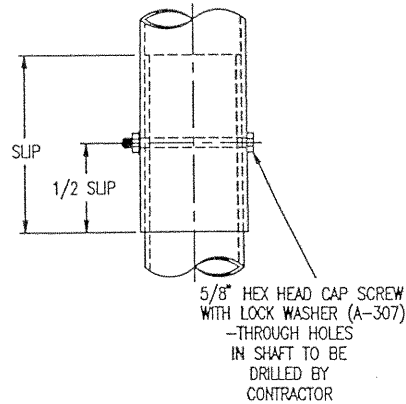
**SPLICE DETAIL**

DETAIL "D"



**LUMINAIRE BRACKET DETAIL**

DETAIL "E"



**POLE SLIP JOINT CONNECTION DETAIL**

DETAIL "F"

DETAIL "G"

DETAIL "H"

**-- GENERAL NOTES --**

**MATERIAL SPECIFICATIONS**

SHAFT	STEEL OF A570 W/48,000 P.S.I. [331mPa] MINIMUM YIELD AFTER FABRICATION
BASEPLATES AND FLANGES	ASTM A-36 STEEL
PIPE	ASTM A-53 GRADE "B" STEEL
ANCHOR BOLTS	ASTM F1554 GR. 55

**MANUFACTURING PROCESSES**

BUTT WELDS	GROUND FLUSH WITH BASE METAL
LONGITUDINAL WELDS	BUTT WELDED BY THE ELECTRICAL RESISTANCE PROCESS
CIRCUMFERENTIAL WELDS	BUTT WELD WITH PERMANENT BACK-UP RING

**FINISH COATING**

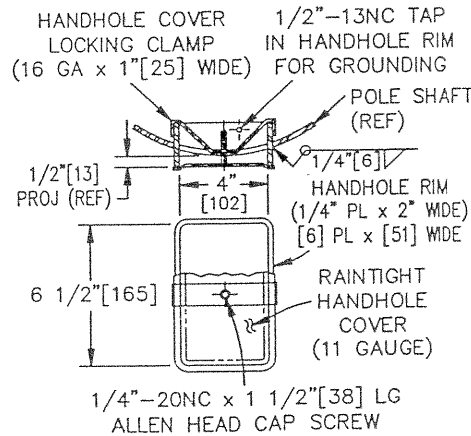
STRUCTURE	HOT DIP GALVINIZE PER ASTM A-123
HARDWARE	HOT DIP GALVINIZE PER ASTM A-153

**DESIGN CRITERIA**

STRUCTURE AND HARDWARE	IN ACCORDANCE WITH THE "SPECIFICATIONS FOR STRUCTURAL SUPPORTS OF HIGHWAY SIGNS, LUMINAIRES AND TRAFFIC SIGNALS, AASHTO 1994-80 MPH
WELDING	IN ACCORDANCE WITH SECTION 1.4.2 OF THE SPECIFICATIONS FOR STRUCTURAL SUPPORTS OF HIGHWAY SIGNS, LUMINAIRES AND TRAFFIC SIGNALS, AASHTO 1994

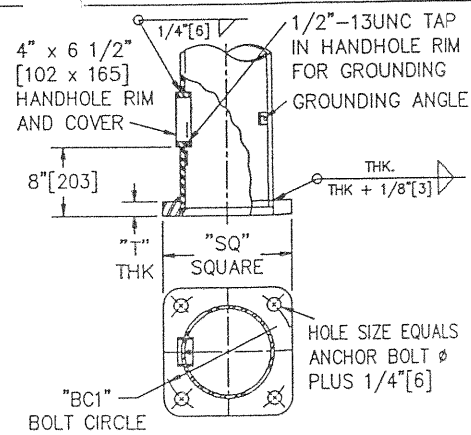
**NOTES:**

- ORDERING NOMENCLATURE  
 POLE TYPE TYPE U69  
 POLE LENGTH
- DIMENSIONS IN [ ] ARE METRIC. FEET ARE CONVERTED TO METERS, INCHES TO MILLIMETERS.
- E.P.A. & WEIGHT INCLUDES FIXTURES & ARMS.



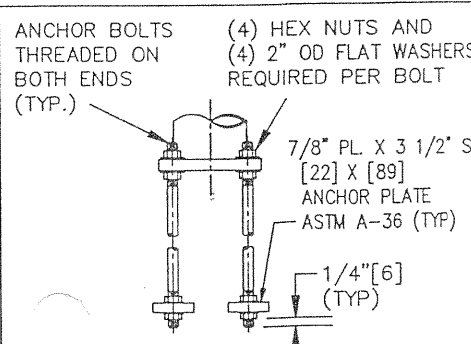
**HANDHOLE DETAIL**

DETAIL "A"



**BASEPLATE DETAIL**

DETAIL "B"



FOR LENGTH AND DIAMETERS SEE "ANCHOR BOLT SIZE" COLUMN IN POLE DATA TABLE

**ANCHOR BOLT DETAIL**

DETAIL "A"

**-- POLE DATA --**

ITEM NO.	POLE QTY	POLE DESCRIPTION	SHAFT LENGTH	SECTION "A"			MIN. SUP	SECTION "B"			BASE SQ "SQ"	BASE BC "BC1"	BASE THK "T"	ANCHOR BOLT DIMENSIONS	DESIGN (NOTE 3)	
				LENGTH	TOP OD x BASE OD x THK.	LENGTH		TOP OD x BASE OD x THK.	E.P.A.	WEIGHT						
		TYPE U65	65'-0" ± [19.81±]	30'-0" [9.14]	8" X 12 1/8" X .179" [203 X 308 X 5]	15" [381]	36'-3" [11.05]	3 7/16" X 8 7/16" X .12" [87 X 214 X 3]	16" [406]	16 1/2" [419]	1 1/2" [38]	1 1/4" X 52" [32 X 1321]	5.0 FT <sup>2</sup> [0.46m <sup>2</sup> ]	140 LBS. [63.5kg]		
		TYPE U69	69'-0" ± [21.03±]	30'-0" [9.14]	8" X 12 1/8" X .179" [203 X 308 X 5]	15" [381]	40'-3" [12.27]	3" X 8 1/2" X .179" [76 X 216 X 5]	16" [406]	16 1/2" [419]	1 1/2" [38]	1 1/2" X 54" [38 X 1372]	8.6 FT <sup>2</sup> [0.8m <sup>2</sup> ]	201 LBS. [91.2kg]		

NO EXCEPTION TAKEN

MAKE CORRECTIONS NOTED

REVISE AND RESUBMIT

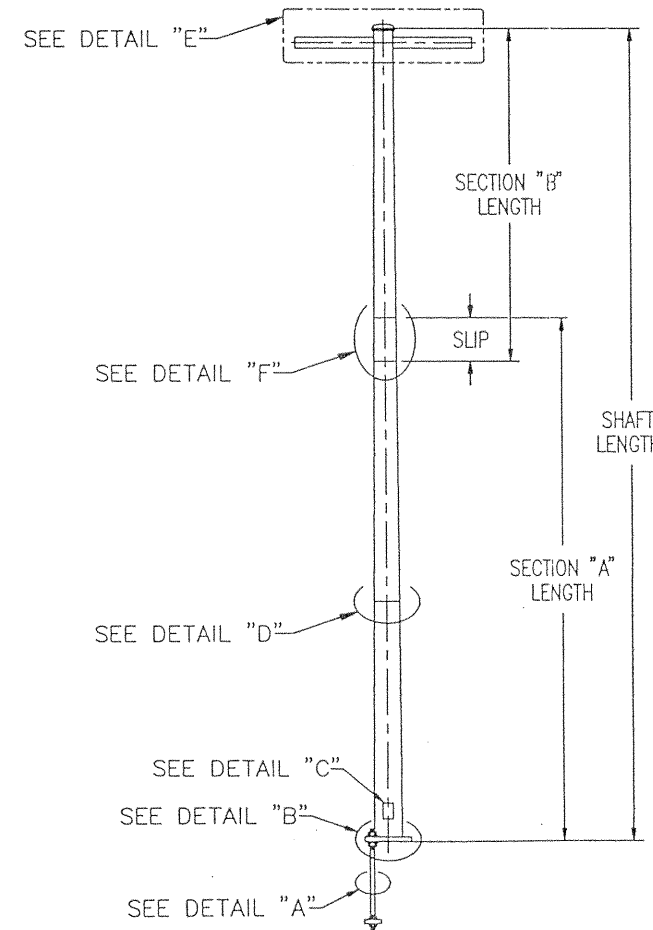
REJECTED

SUBMIT SPECIFIED ITEM

DATE: 4/19/99

REVIEW IS ONLY FOR GENERAL CONFORMITY TO THE CONTRACT DRAWINGS AND SPECIFICATIONS, AND SHALL NOT RELIEVE THE CONTRACTOR OF HIS OR HER RESPONSIBILITY UNDER THE CONTRACT INCLUDING, AMONG OTHER THINGS, DIMENSIONS TO BE CONFIRMED AND CORRELATED AT THE JOB SITE, AND INFORMATION OF THAT PERTAINS TO THE FABRICATION PROCESS OR TO TECHNIQUES OF CONSTRUCTION.

PARSONS, BRINCKERHOFF  
 QUADE & DOUGLAS, INC.  
 1501 W. FOUNTAIN HEAD PKWY.  
 SUITE 400  
 TEMPE, ARIZONA  
 85282



**POLE TYPE "U65"**  
**POLE TYPE "U69"**

AGENCY:	ARIZONA D.O.T.
PROJECT:	
PROJECT NO.:	
DISTRIBUTOR:	
CONTRACTOR:	
CUSTOMER ORDER NO.:	
AMERON NO.:	

MATERIAL LIST	
QTY.	DESCRIPTION

REV	DATE	DESCRIPTION	BY	APPR
A	2/99	MISC. REVISION	S.M.O.	GM

**Ameron POLE PRODUCTS DIVISION**

**STATE OF ARIZONA**  
**TYPE "U65" & "U69" POLES**

THIS DOCUMENT CONTAINS INFORMATION WHICH IS PROPRIETARY TO AMERON. IT SHALL NOT BE REPRODUCED, USED OR DISCLOSED TO ANYONE WITHOUT THE PRIOR WRITTEN PERMISSION OF AMERON.

DRAWN: S.M.O.	DATE: 12/98	SCALE: DWG. NO.	REV.
APPR: GM	DATE: 12/98	N.T.S. AZ98U69	A