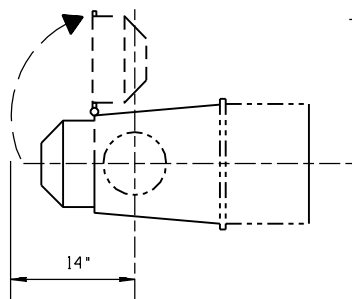


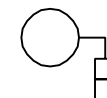
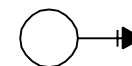
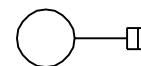
ILLUMINATED MESSAGE, PEDESTRIAN,  
OR TRAFFIC SIGNAL.



PROGRAMMED VISIBILITY  
SIGNAL

LIST OF MATERIALS		
Item	Qty.	Description
1	1	Pole Plate (T.S. 10-3-2)
2	2	1/2" Pipe Nipple, See Table Below.
3	1	90° Elbow.
4	1	Flat Washer.
5	1	Neoprene Washer.
6	2	Lock Nipple, 1/2" Long.
7	1	Signal Housing, See Plans.
8	1	90° Elbow With Locking Device. (T.S.10-1-2)
9	1	Pole Plate With Wire Guide. (T.S.10-3-1)
10	4	1/2" x 2" Galvanized Steel Bolt, 13 UNC With Flat Washer And Lock Washer.
11	1	Lock Ring (T.S.10-1-5) Used Only When Item 7 Contains No Locking Teeth.
12	2	Close Nipple.

ITEM 2	
NIPPLE LENGTH	SIGNAL TYPE
6"	Standard Signal Comb.
12"	Illuminated Message
16"	Programmed Signal
12"	Pedestrian Signal



PEDESTRIAN SIGNAL

TRAFFIC SIGNAL

ILLUMINATED MESSAGE

PLAN SYMBOLS

NOTES:

1. For Pole Drilling Details, See T.S. 4-21.

DESIGN APPROVED	<b>SIGNATURE</b>	ARIZONA DEPT. OF TRANSPORTATION INTERMODAL TRANSPORTATION DIVISION TRAFFIC SIGNALS & LIGHTING STANDARD DRAWINGS	REV.
APPROVED FOR DISTRIBUTION		TYPE XI MOUNTING ASSEMBLY	DRAWING NO. T.S. 9-9
<b>ON FILE</b>			