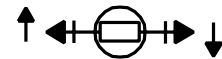


Use for Item 2 only

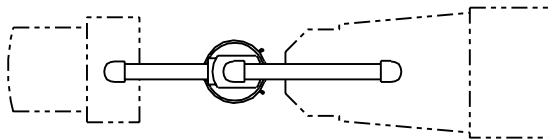
Signal Face	C	Q	F/R	M	H	G
Nipple Length	21"	61 1/2"	34 1/2"	34 1/2"	48"	48"

LIST OF MATERIALS		
Item	Qty.	Description
1	1	Pole Top Mounted Terminal Compartment. (T.S. 10-4-2)
2	1	1/2" Pipe, See Table
3	1	Elbow, 1/2", 90°, Reamed, Drilled, & Tapped For Screw.
4	2	Nipple, 1/2" x 14 1/2".
5	2	Elbow, 1/2", 90°. (3 Required When Optical Signal is Used.)
*	2	Flat Washer.
*	2	Neoprene Washer.
*	4	1/2" Lock Nipple, See Note 1 Below.
	9	Signal Head, See Plans.
*	2	Elbow, 1/2", 90°, With Locking Device.
	11	Nipple, 1/2" x 14".
	12	Pole Plate. (T.S. 10-3-2)
	13	1/2" x 2" Galvanized Steel Bolt 13-UNC With Flat Washer And Lock Washer.
	14	Close Nipple, 1/2" x 1 3/4".
	15	Programmed Visibility Signal Assembly.

* This Item Is Not Required For Programmed Visibility Signal.



PLAN SYMBOL



ORIENTATION PLAN

NOTES:

1. Lock Nipple Length shall be 1/8" for 8" Heads and 1 3/4" for 12" Heads.

DESIGN APPROVED

SIGNATURE

ARIZONA DEPT. OF TRANSPORTATION
INTERMODAL TRANSPORTATION DIVISION
TRAFFIC SIGNALS & LIGHTING
STANDARD DRAWINGS

APPROVED FOR DISTRIBUTION

ON FILE

TYPE X
MOUNTING ASSEMBLY

DRAWING NO.

T.S. 9-8