

PLAN SYMBOLS

(ITEM 11)

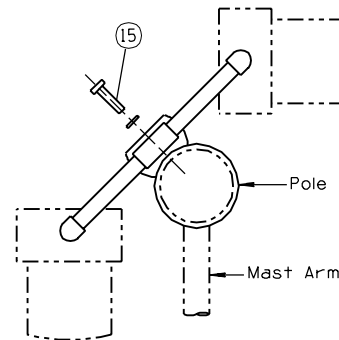
SIGNAL FACES COMBINATION	↓					
	C	O	F/R	M	H	G
C	0	40 1/2"	13 1/2"	13 1/2"	27"	27"
O	40 1/2"	0	27"	27"	13 1/2"	13 1/2"
F/R	13 1/2"	27"	0	0	13 1/2"	13 1/2"
M	13 1/2"	27"	0	0	13 1/2"	13 1/2"
H	27"	13 1/2"	13 1/2"	13 1/2"	0	0
G	27"	13 1/2"	13 1/2"	13 1/2"	0	0

TABLES TO BE USED FOR FINDING NIPPLE LENGTHS.

(ITEM 6)

SIGNAL FACES COMBINATION	↓					
	C	O	F/R	M	H	G
C	21"	61 1/2"	34 1/2"	34 1/2"	48"	48"
O	61 1/2"	61 1/2"	61 1/2"	61 1/2"	61 1/2"	61 1/2"
F/R	34 1/2"	61 1/2"	34 1/2"	34 1/2"	48"	48"
M	34 1/2"	61 1/2"	34 1/2"	34 1/2"	48"	48"
H	48"	61 1/2"	48"	48"	48"	48"
G	48"	61 1/2"	48"	48"	48"	48"

Threads On One End Only.



MOUNTING ORIENTATION PLAN

(SEE NOTE 3)

NOTES:

1. Lock Nipple Length shall be 1/8" for 8" Heads and 3/4" for 12" Heads.
2. For Pole Drilling Detail See T.S. 4-21.
3. Mounting Orientation may differ from what is shown. See plans for desired orientation.

LIST OF MATERIALS

Item	Qty.	Description
1	1	Terminal Compartment For Side Mounting. (T.S. 10-4-1)
* 2	2	1/2" Pipe Nipple, 11 1/2" Long For Ped. Signal Heads.
3	2	90° Elbow With Locking Device. (T.S. 10-1-2)
4	4	1/2" Lock Nipple, See Note No. 1.
5	2	Signal Head, See Plans.
6	1	Center Pipe, See Table.
7	1	Tee, Drill & Tap For Setscrew.
8	2	Neoprene Washer.
9	2	Flat Washer.
10	1	1/2" Pipe Coupling, As Required.
11	1	1/2" Pipe Nipple, See Table.
12	2	90° Elbow.
* 13	2	1/2" Pipe Nipple, 12 1/2" Long For Ped. Signal Heads.
* 14	1	1/2" Pipe Nipple, 9 1/2" Long For Ped. Signal Heads.
15	2	1/2" x 2" Galvanized Steel Bolt 13 UNC With Flat Washer And Lock Washer.
16	2	1/2" Pipe Nipple, 24 1/2" Long.
17	2	1/2" Pipe Nipple, 24" Long.
18	1	Conduit Lock Nut. (For "F", "M", & "R" Combination Only.)
19	1	1/2" Pipe Nipple, 3" Long (For "F", "M", & "R" Combination Only.)
20	1	Malleable Hex Nut (For "F", "M", & "R" Combination Only.)

\* Special Nipple Length For Use Only With Ped. Signal Single Head Units.

DESIGN APPROVED

**SIGNATURE**

ARIZONA DEPT. OF TRANSPORTATION  
INTERMODAL TRANSPORTATION DIVISION  
TRAFFIC SIGNALS & LIGHTING  
STANDARD DRAWINGS

APPROVED FOR DISTRIBUTION

**ON FILE**

TYPE VII  
MOUNTING ASSEMBLY

DRAWING NO.

T.S. 9-5