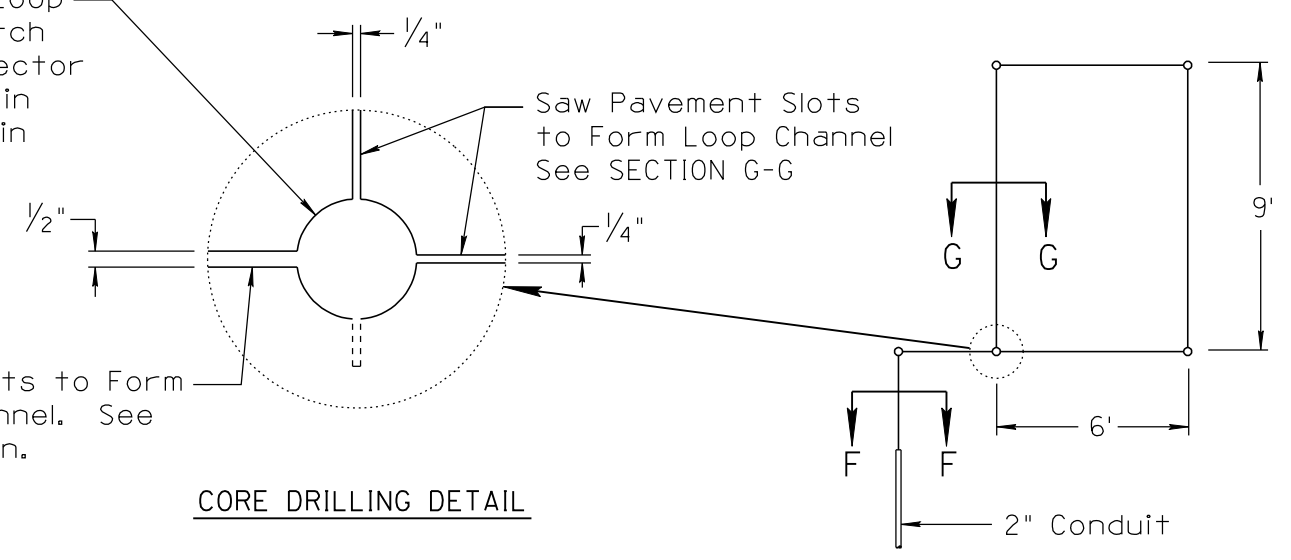


NO	DESCRIPTION OF REVISIONS	DATE	MADE BY
1	2010 EDITION	03/10	C. COLE
2			
3			
4			

Drill Detector Loop
Corners to Match
Bottom of Detector
Loop and Lead in
Slot, 1/2" Dia, Min

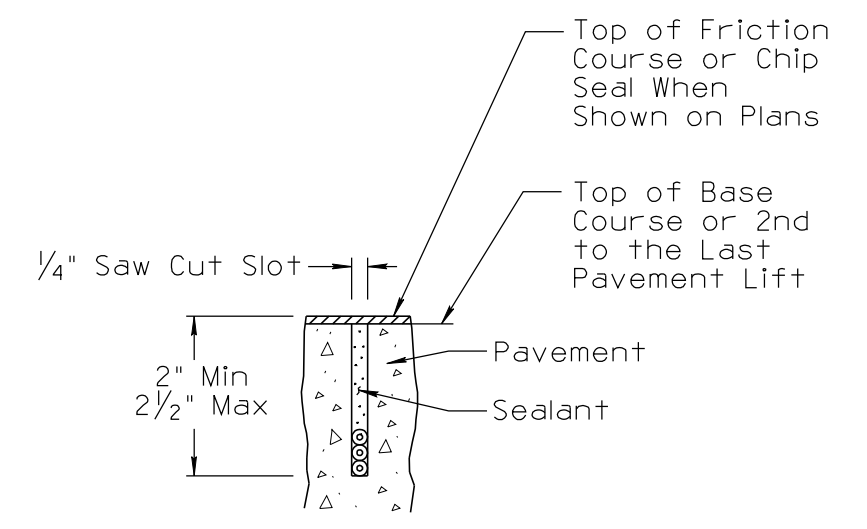


Saw Pavement Slots to Form
Loop Lead-In Channel. See
Plans For Location.
See SECTION F-F

CORE DRILLING DETAIL

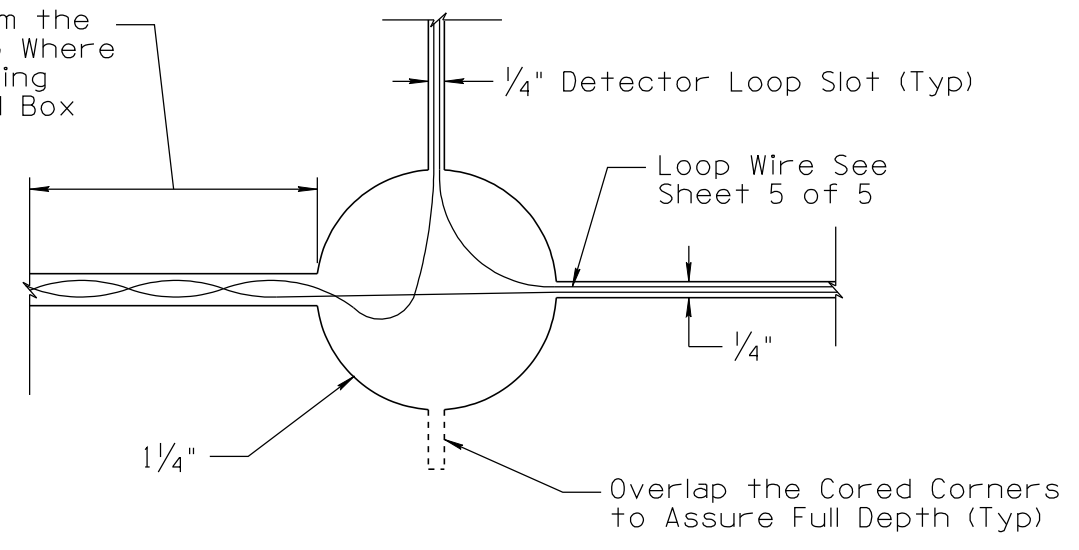
SAW CUT LOOP DETAIL

DETAIL B

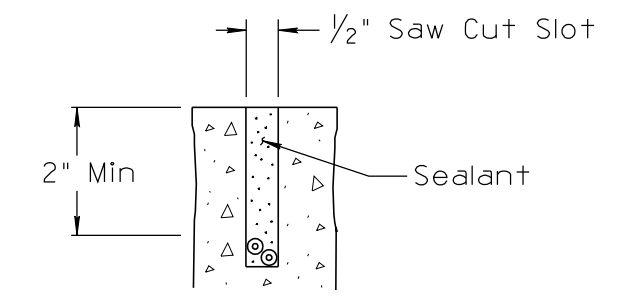


SECTION G-G
(Loop Channel)

The distance from the
edge of the Loop Where
the Lead-in Twisting
Begins to the Pull Box
Shall not Exceed
75 Feet



CORE WITH WIRING



SECTION F-F
(Loop Lead-in Installation)

NOT TO SCALE

DESIGN APPROVED	ARIZONA DEPARTMENT OF TRANSPORTATION INTERMODAL TRANSPORTATION DIVISION TRAFFIC SIGNALS AND LIGHTING STANDARD DRAWINGS	REVISION 03/10
APPROVED FOR DISTRIBUTION		DRAWING NO. T.S. 6-4
DETAIL B DETECTOR LOOP DETAILS		SHEET NO. 4 OF 5