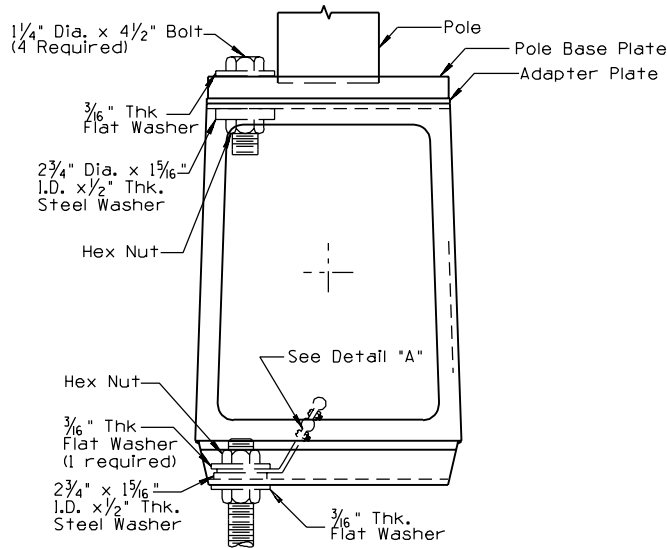


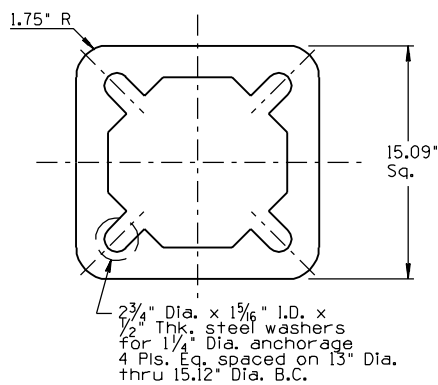
FRONT VIEW



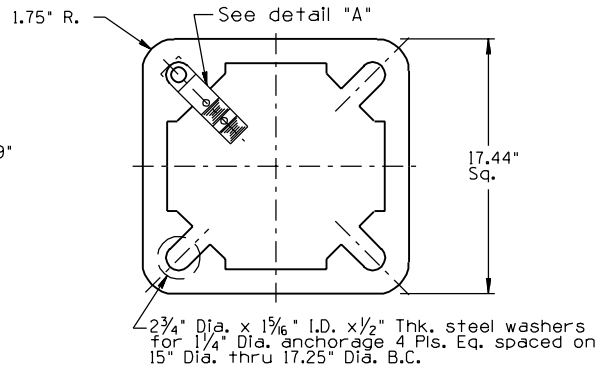
Connection Detail

NOTES:

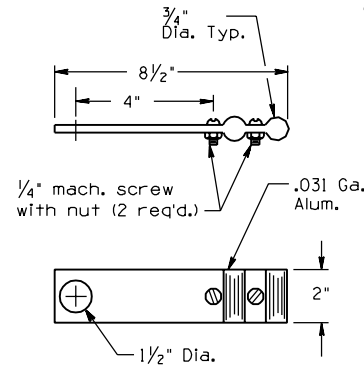
1. All materials and construction shall conform to the requirements of the Specifications.
2. Break-away base shall be mounted on 1/4" Dia. anchor bolts utilizing 1 hex nut, 1 flat washer and 1-2 3/4" Dia. X 1 5/16" I.D. X 1/2" Thk. steel washer per bolt. The single connector clamp shall utilize a 3/16" flat washer between the hex nut & the connector clamp.
3. The anchor bolt, hex nut and flat washer between the foundation and the Break-Away Base shall be furnished with the light pole.
4. Pole shall be mounted on Break-Away Base with 4-1/4" Dia. x 4 1/2" (8 UNC) high strength bolts (ASTM A325), utilizing 1 hex nut, 1 flat washer and 1-2 3/4" Dia. x 1 5/16" I.D. x 1/2" Thk. steel washer per bolt, all furnished with the Break-Away Base.
5. The base shall be installed such that the base door is positioned under the mast arm or 180 degrees to the mast arm.
6. Use Un-fused connector for each conductor in Break-Away Base. For details see T.S.I-8.
7. Door supplied with manufacturer's logo in aluminum. Standard 1/4"-20 stainless steel hex screws or vandal screws shall be provided.
8. All 2 3/4" Dia. x 1 5/16" I.D. x 1/2" Thk washers shall be zinc mechanical coated per ASTM B 695-85 class 50. All other bolts, nuts & washers shall be galvanized per ASTM A153.
9. Base shall be 356 T-6 Aluminum alloy with stainless steel wheelabrated finish.
10. Certifications to be provided by manufacturer when requested.
11. Adhesive caution label to appear on inside wall opposite door opening.



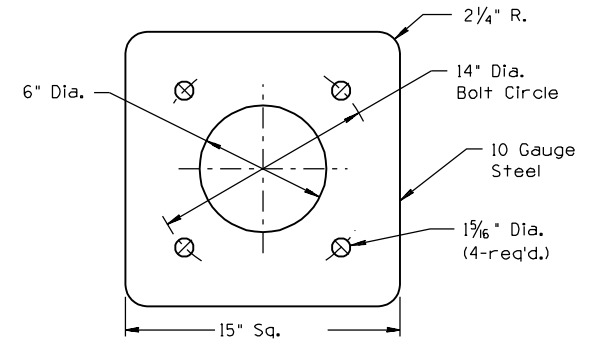
TOP VIEW



BOTTOM VIEW



IN-LINE CONNECTOR CLAMP DETAIL "A"



ADAPTER PLATE

(Installed between base & pole when pole plate holes are slotted)

GENERAL LOADING CRITERIA:

900 lb. Max Total Weight; Pole 600 lb.; Mast Arm & Luminaire 300 lb. (Twin Unit)
Max Static Load 65,000 Ft.-Lbs.
Highway Light Pole & Mast Arm/Luminaire combinations which exceed the loading criteria must be tested and FHWA certified in accordance with the Specifications.

DESIGN APPROVED	ARIZONA DEPT. OF TRANSPORTATION		REV.
SIGNATURE ON FILE	INTERMODAL TRANSPORTATION DIVISION		7/04
APPROVED FOR DISTRIBUTION	TRAFFIC SIGNALS & LIGHTING		
SIGNATURE ON FILE	STANDARD DRAWINGS		
	TYPE 3		DRAWING NO.
	BREAK-AWAY BASE		T.S. 5-2
	FOR 40' POLE AND ABOVE		