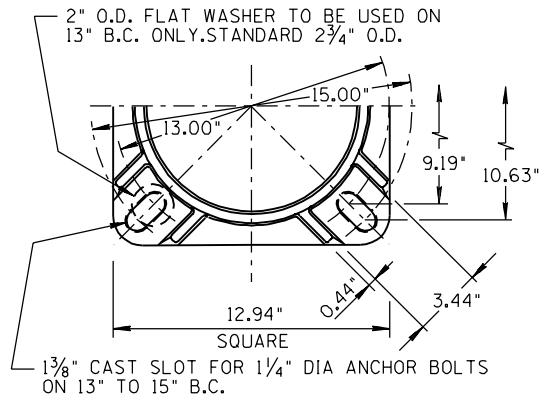
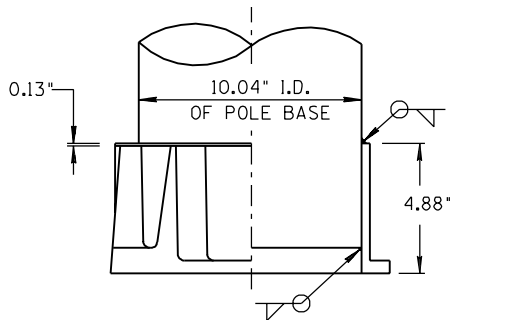


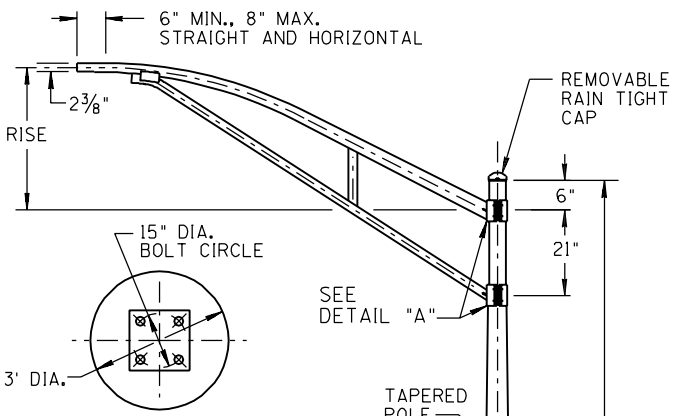
NO.	DESCRIPTION OF REVISIONS	MADE BY	DATE
1	TEXT EDIT NOTE #2	L. LOPEZ	10/03
2			
3			
4			



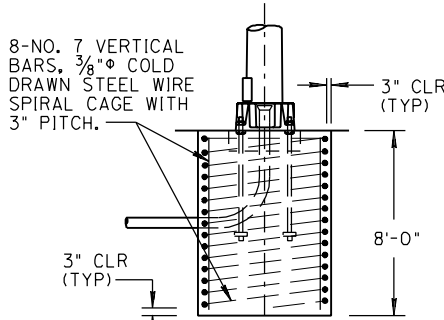
PLAN VIEW



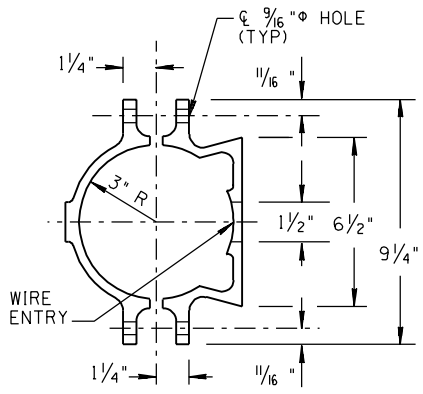
STD. POLE BASE HALF SECTION AND ELEVATION



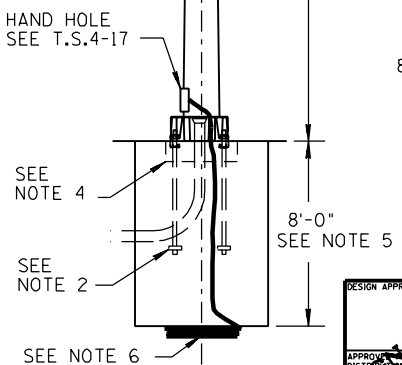
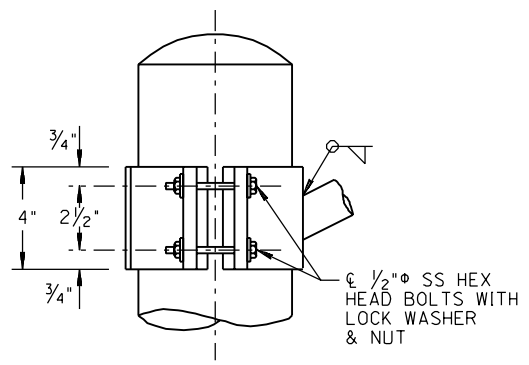
PLAN VIEW



FOUNDATION FOR STANDARD POLE BASE



DETAIL "A"



NOT TO SCALE

MAST ARM INFORMATION		
LENGTH	RISE	MIN.* THICK.
6'	2' THRU 4'	0.125"
10'	2' THRU 4'	0.125"
15'	2' THRU 4'	0.125"
20'	4' THRU 6'	0.125"

* MIN. THICKNESS OF VERTICAL MEMBER IN MAST ARM = 0.1563"

NOTES:

1. ALL MATERIALS AND CONSTRUCTION SHALL CONFORM TO THE REQUIREMENTS OF THE STANDARD SPECIFICATIONS AND SPECIAL PROVISIONS.
2. SEE T.S.4-20a DETAIL "B" FOR ANCHOR BOLT DETAILS. EACH ANCHOR BOLT SHALL HAVE FOUR HEX NUTS, TWO FLAT WASHERS, AND TWO ANCHOR PLATES. ALL TO BE FURNISHED WITH THE POLE.
3. ANCHOR BOLTS SHALL PROJECT 3 INCH ABOVE THE FOUNDATION.
4. BLOCK OUT FOR LEVELING NUTS. SEE STANDARD SPECIFICATIONS FOR GROUT.
5. UNSTABLE SOIL MAY REQUIRE DEEPER FOUNDATION. SEE STANDARD SPECIFICATIONS.
6. A 25 FT. COIL OF NO. 4 AWG BARE COPPER CONDUCTOR SHALL BE INSTALLED BEFORE THE CONCRETE IS POURED AND CONNECTED TO POLE GROUNDING SCREW IN THE HAND HOLE.
7. CONDUIT SHALL PROJECT A MINIMUM OF 2 INCH ABOVE THE FOUNDATION, MAXIMUM PROJECTION SHALL BE 4 INCH.
8. THE FOUNDATION HOLE SHALL BE AUGERED AND CLASS "S" (3000 PSI) CONCRETE POURED AGAINST UNDISTURBED EARTH.

DESIGN APPROVED SIGNATURE ON FILE	ARIZONA DEPARTMENT OF TRANSPORTATION INTERMODAL TRANSPORTATION DIVISION STANDARD DRAWINGS	REV. 10/03
	ALUMINUM TYPE "I" POLE AND MAST ARM	DRAWING NO. T.S.4-9a