

NO	DATE	MADE BY	DESCRIPTION OF REVISIONS
1	2010 EDITION	C. COLE	
2			
3	03/10		
4			

NOTES:

- All materials and construction shall conform to the requirements of the Specifications.
- Pole shall comply with 1994 AASHTO loading requirements for Structural Supports for Highway Signs, Luminaires and Traffic Signals.
- See T.S. 4-23 for anchor bolt details.
- The foundation hole shall be augered and Class "S" (3000 PSI) concrete, poured against undisturbed compacted earth.
- Unstable soil and/or steep slope may require deeper foundation. See Specifications.
- A 25' coil of #4 AWG bare copper conductor or 14" square copper ground plate shall be installed before the concrete is poured and connected to pole grounding lug in the hand hole. The ground or coil shall be covered with 6" of fill.
- For inboard tenon, when specified, see tenon detail on T.S. 9-1.
- All pole shafts shall be continuous taper or straight pipe.
- All dimensions are nominal.
- This Pole can be used with 12', 15', 18' or 20' mast arms.
- Once the pole installation is completed the open space between the base plate and foundation shall be grouted.

SPECIAL NOTE:

- This Traffic Signal Pole is for special applications only, and must be approved for design use by ADOT Traffic Engineering.

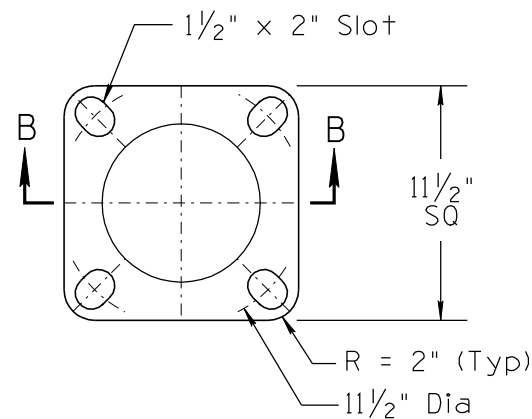
See T.S. 4-31 for Tenon Details

Removable Raintight Cap
Tapered Traffic Signal Mast Arm See T.S. 4-26 Detail C
(12' Traffic Signal Mast Arm Shown)

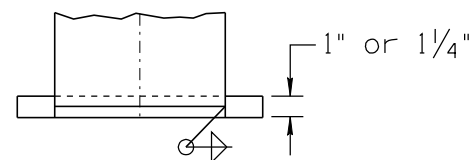
See T.S. 4-26 for Connection Details

Removable Raintight Cap

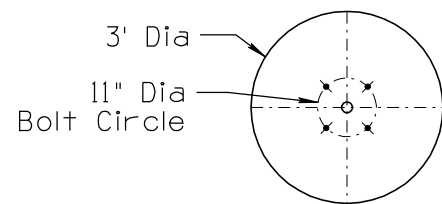
See T.S. 4-26 for Connection Details



BASE PLATE DETAIL

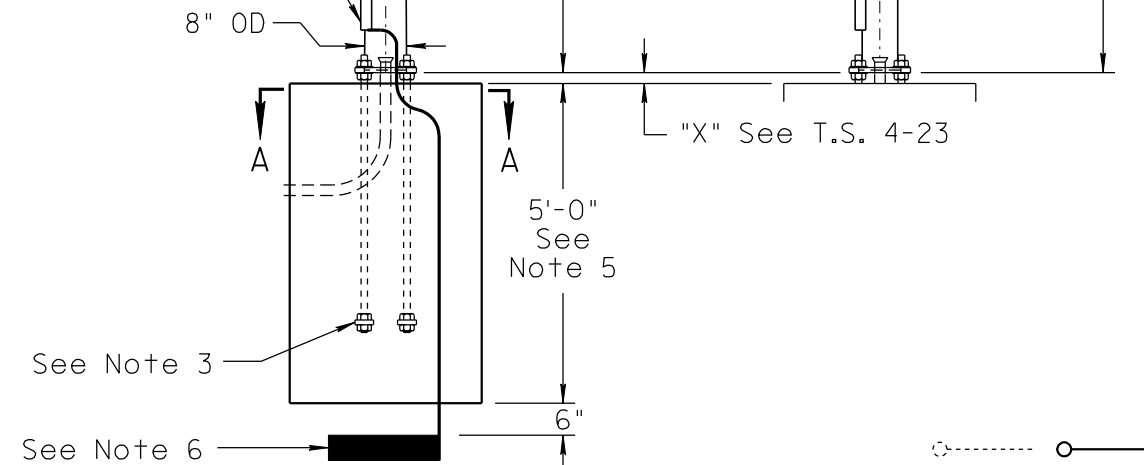


SECTION B-B
(Bolt Slots Not Shown)



SECTION A-A

See T.S. 4-20 for Hand Hole Details



PLAN SYMBOLS

NOT TO SCALE

DESIGN APPROVED	ARIZONA DEPARTMENT OF TRANSPORTATION INTERMODAL TRANSPORTATION DIVISION TRAFFIC SIGNALS AND LIGHTING STANDARD DRAWINGS	REVISION	03/10
APPROVED FOR DISTRIBUTION		DRAWING NO.	T.S. 4-2
		SHEET NO.	1 OF 1