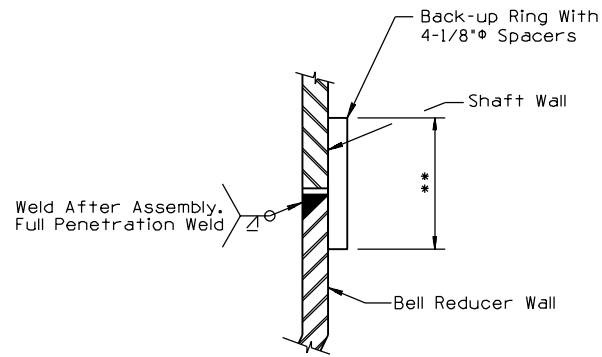
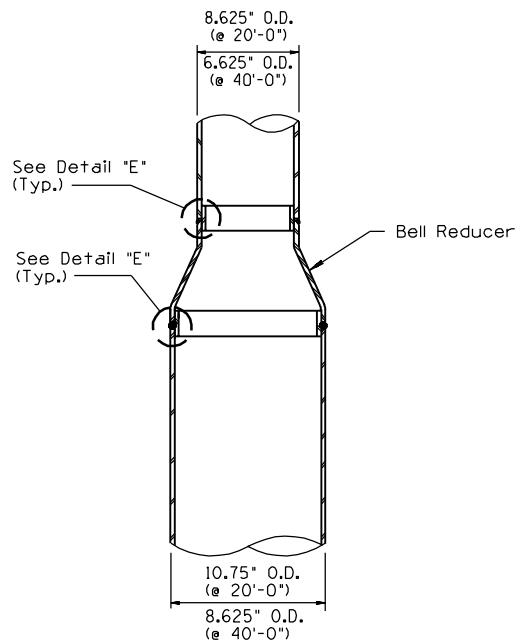


DETAIL "E"

**The spacers shall be at the mid height of the backup ring.

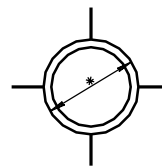


DETAIL E



BELL REDUCER TYPE

(Typical @ 20'-0" & 40'-0")



BACK-UP RING

(Typical)

*Outside Diameter to Adjust to the Inside Diameter of Bell Reducer and the Pole Shaft.

STEP-TAPERED POLE CONNECTION DETAILS
(TYPICAL FOR ALL TYPE U POLES)

DESIGN APPROVED	SIGNATURE	ARIZONA DEPT. OF TRANSPORTATION	REV.
APPROVED FOR DISTRIBUTION		INTERMODAL TRANSPORTATION DIVISION	
	ON FILE	TRAFFIC SIGNALS & LIGHTING	
		STANDARD DRAWINGS	DRAWING NO.
		TYPE "U" POLE CONNECTION DETAILS	T.S. 4-19