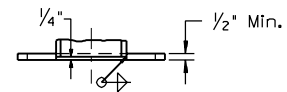
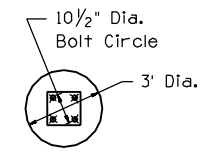


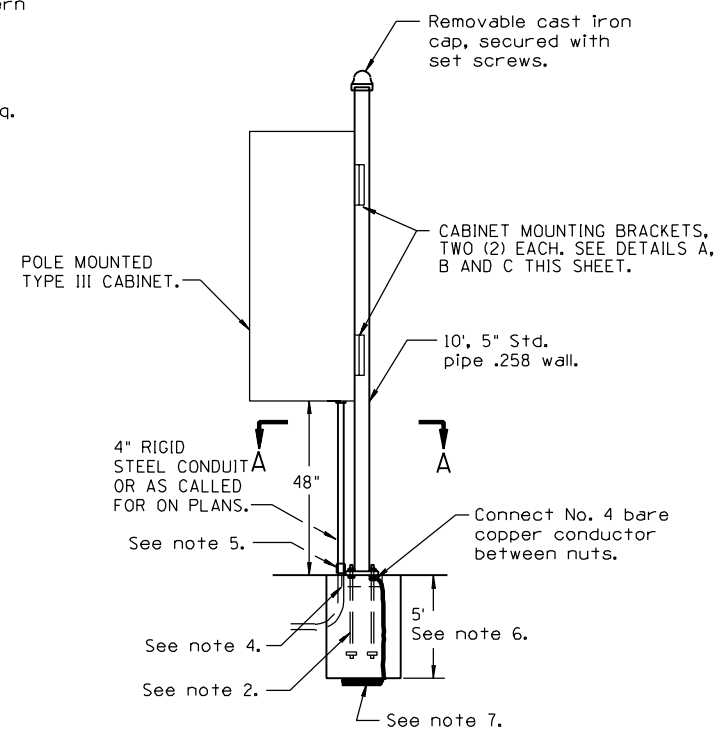
**SECTION A-A**



**SECTION B-B  
BASE PLATE DETAIL**



**FOUNDATION PLAN**



**NOTES:**

1. All materials and construction shall conform to the requirements of the Standard Specifications.
2. Anchor bolts shall be 1" x 36", with two hex nuts and two flat washers per bolt.
3. Anchor bolts shall project 2 3/4" above the foundation.
4. Block out for leveling nuts.
5. Conduit shall project a minimum of 2" and a maximum of 4" above the foundation. Provide 4" rigid coupling or as called for on plans, above foundation. See plans for conduit location.
6. Unstable soil may require deeper foundation. See Standard Specifications. Concrete shall be CLASS "S" (3000 psi).
7. A 25' coil of No. 4 AWG bare copper conductor shall be installed before the concrete is poured and connected to an anchor bolt.
8. Cabinet shall be bolted to the mounting brackets with 4 - 3/8" x 1/4" x 16 grade 8 bolts with lock washers and oversized fender washers.

DESIGN APPROVED	<b>SIGNATURE</b>	ARIZONA DEPT. OF TRANSPORTATION INTERMODAL TRANSPORTATION DIVISION TRAFFIC SIGNALS & LIGHTING STANDARD DRAWINGS	REV.
APPROVED FOR DISTRIBUTION		POLE MOUNT DETAILS FOR TYPE III CONTROL CABINET	DRAWING NO. T.S. 3-8
		<b>ON FILE</b>	