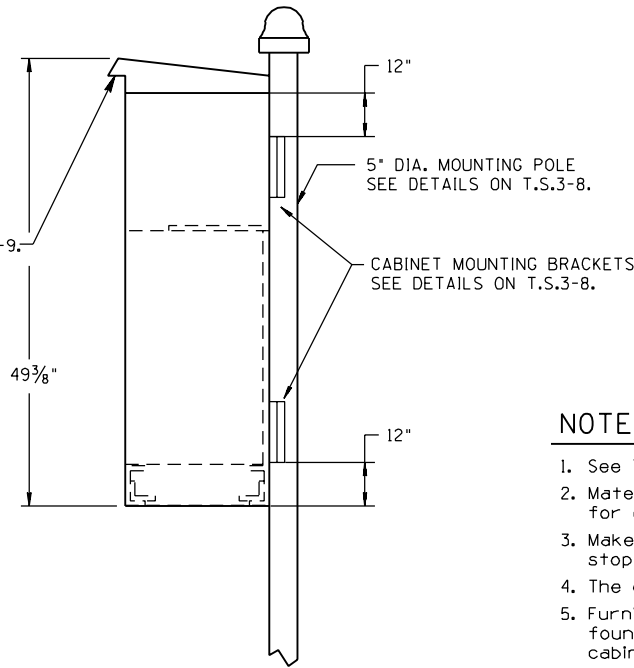


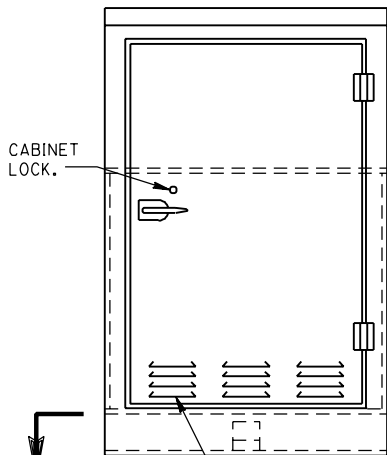
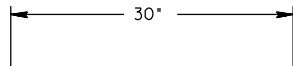
FOR DOOR STOP
SEE T.S. 3-9.

SEE VENTILATION
DETAIL ON T.S. 3-9.

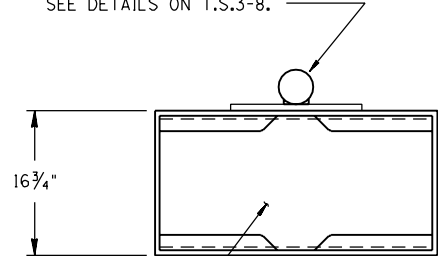


NOTES:

1. See T.S. 3-6 for cabinet lock details.
2. Material shall be 5052-h32 sheet aluminum alloy, 0.125 inch thickness for cabinet housing and doors.
3. Make full height door which uses stainless hinges and has door stops and locks.
4. The cabinet shall be NEMA 3R rated and dust proof.
5. Furnish gasketing for doors which satisfy physical properties as found in UL 508 Table 21.1. Make weather tight seals between the cabinet and the door.
6. Use heliarc welding method for all external and internal continuous welds. Make welds free of cracks, blow holes and other irregularities. Make inside and outside edges of cabinet free of burrs and provide a smooth, uniform and natural aluminum finish on the outside surfaces.
7. Provide a 2 to 5 degree sloped surface on the top of the cabinet so as to prevent water accumulation.
8. Provide double flanged door openings on all four (4) sides to increase strength around the openings and to keep any liquid or dirt from entering the enclosure when the door is opened.
9. Use door restraints to prevent door movement when opened in windy conditions.
10. Use 1/4-20 300 series stainless steel carriage bolts and 300 series stainless steel NY-lock nuts for bolting hinges to the cabinet and the door.
11. Furnish hinges made of 075-14 gauge 300 series stainless steel. Weld the top and bottom of the hinge pin to render it tamper proof.
12. Furnish gasketing for bolt holes which meet or exceed the requirement of a NEMA 3R rating.
13. Shelves shall be removable and adjustable for vertical spacing. Shelves shall be fabricated from sheet steel and capable of supporting a load of 75 lbs.



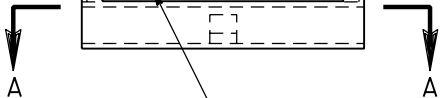
5" POLE AND MOUNTING BRACKETS
SEE DETAILS ON T.S.3-8.



PROVIDE 0.250 INCH THICK
BASE PLATE CONTINUOUSLY
WELDED IN PLACE ON ALL SIDES.

SECTION A-A


PLAN SYMBOL



FILTERED VENTILATING LOUVERS
11" x 20" x 1" AIR FILTER.

DESIGN APPROVED	SIGNATURE	ARIZONA DEPT. OF TRANSPORTATION INTERMODAL TRANSPORTATION DIVISION TRAFFIC SIGNALS & LIGHTING STANDARD DRAWINGS	REV.
APPROVED FOR DISTRIBUTION		ON FILE	DRAWING NO. T.S. 3-7
		POLE MOUNT FOR TYPE III CONTROL CABINET	