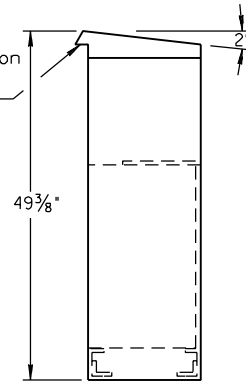
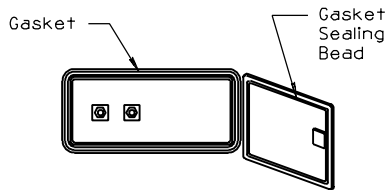


See Ventilation detail on T.S. 3-9

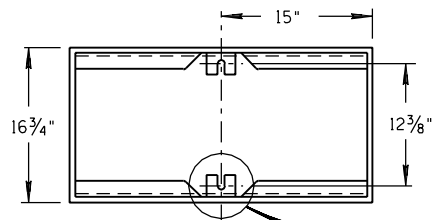
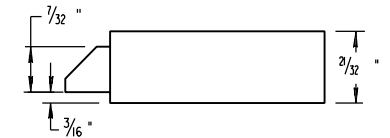
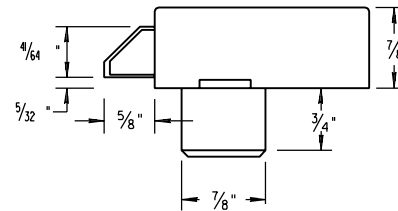


NOTES:

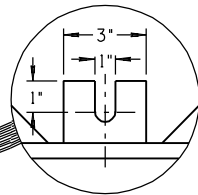
1. See Specifications for construction requirements.
2. For painting see Specifications.
3. Material, 10 gauge aluminum or 14 gauge steel.
4. The door shall be raintight and dust proof.
5. For size and position of anchor bolts see Foundation Detail T.S. 2-3. Anchor bolts shall be furnished with cabinets.
6. For concrete foundation details see T.S. 2-3.
7. Shelves shall be removable and adjustable for vertical spacing. Shelves shall be fabricated from sheet steel.



POLICE PANEL

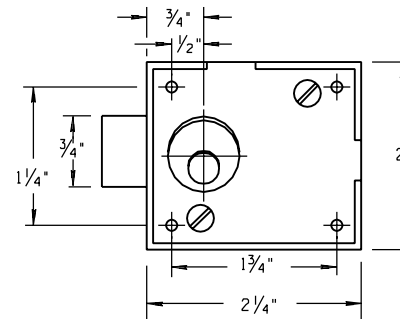


SECTION A-A

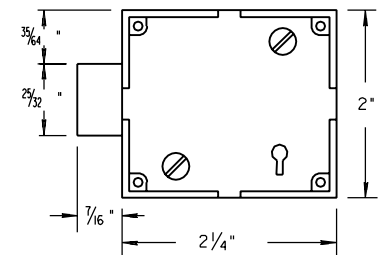


ANCHOR BOLT SLOT DETAIL

(TYPICAL)



CABINET LOCK



POLICE LOCK

 PLAN SYMBOL

DESIGN APPROVED	SIGNATURE	ARIZONA DEPT. OF TRANSPORTATION INTERMODAL TRANSPORTATION DIVISION TRAFFIC SIGNALS & LIGHTING STANDARD DRAWINGS	REV.
APPROVED FOR DISTRIBUTION		ON FILE	DRAWING NO. TYPE III CONTROL CABINET T.S. 3-6