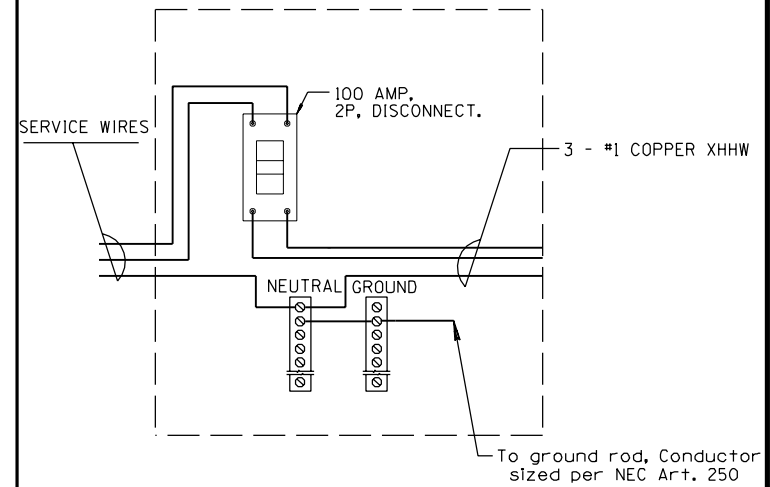
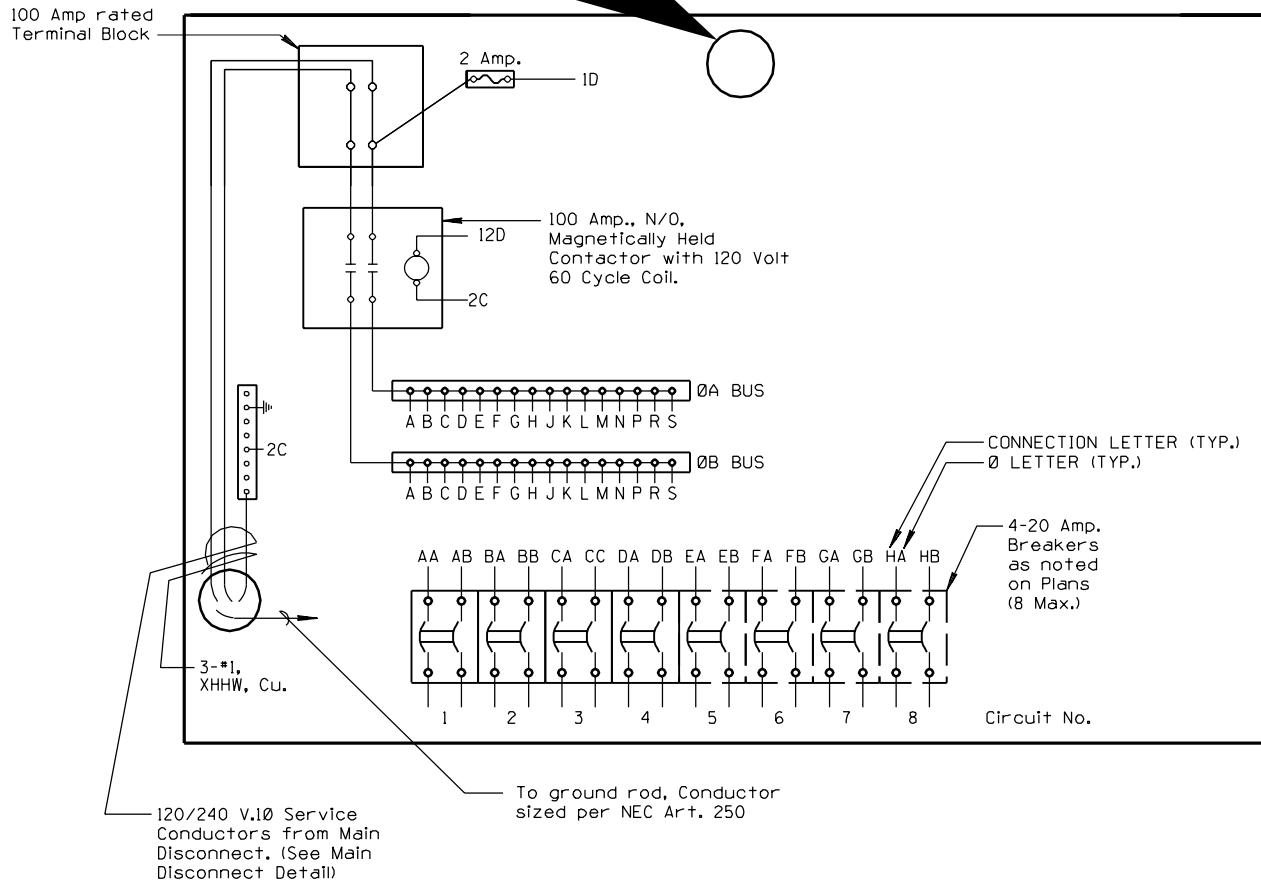


NOTES:

1. All service conductors and service switches shall be 100 amp. capacity.
2. All components on 120/240 volt circuits shall be rated for 600 volt operation. All other components shall be rated for 250 volt operation.
3. Typical component installations are shown, leave space for future component installation.
4. See T.S. 3-12 for details on Pan and Jack Mounted Components.
5. All components shall be interior mounted.
6. All live electrical components shall be protected by a dead-front panel which conforms to the NEC, see specifications.



SERVICE DISCONNECT MOUNTED INSIDE CABINET (OPTIONAL)

120/240 VOLT, 3W
SINGLE PHASE
WIRING DIAGRAM

DESIGN APPROVED	SIGNATURE	ARIZONA DEPT. OF TRANSPORTATION	REV.
APPROVED FOR DISTRIBUTION		INTERMODAL TRANSPORTATION DIVISION	
	ON FILE	TRAFFIC SIGNALS & LIGHTING	
		STANDARD DRAWINGS	
		TYPE II LOAD CENTER CABINET	DRAWING NO.
		WIRING DETAILS 120/240 3W	T.S. 3-3