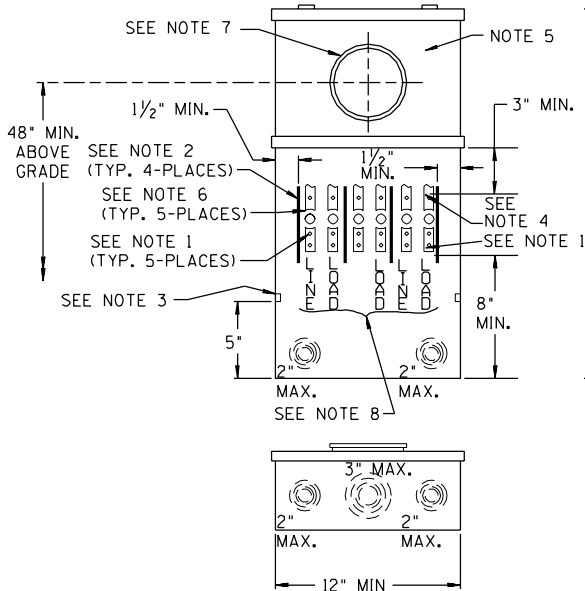


WIRING DIAGRAM

NOTES:

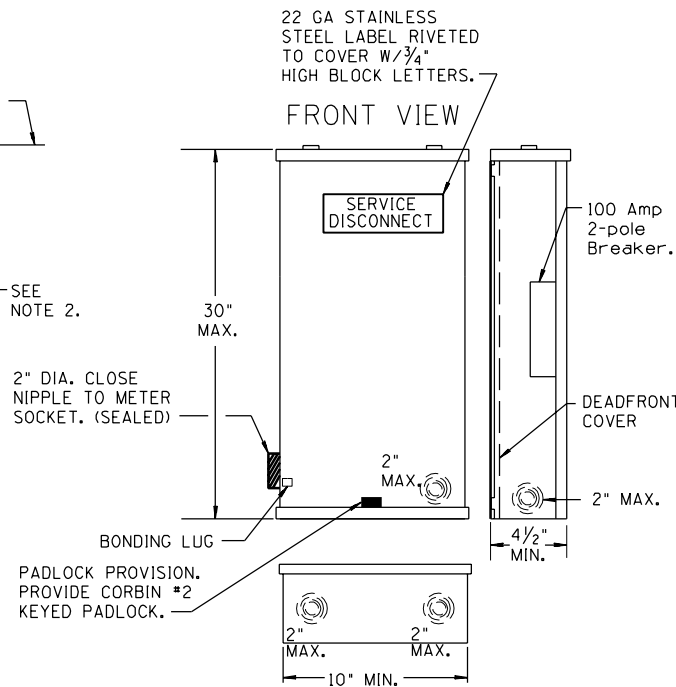
1. Aluminum bodied terminals for #6 through #1/0 wire. (Maximum terminal size 250 KCMIL).
2. Rigid insulating barriers. See EUSERC Plate 0.B.
3. Insulated double neutral lug mounted on either sidewall per NEC.
4. Upper test connector studs.
5. All section covers shall be independently removable. Upper cover shall be non-removable when meter is in place. Meter socket shall be mounted on support and attached to panel. Lower cover shall be sealable and permanently labeled; "DO NOT BREAK SEALS. NO FUSES INSIDE".
6. Test - bypass block. See EUSERC Plate 0.B.
7. Provide a 120/240V. or 240/480V. 4 jaw meter socket approved by the electric utility company or as noted on plans.
8. Permanent labels on inside back of enclosure in 3/4" (Min.) high Block letters.
9. The Meter socket housing shall be constructed of minimum 16 gauge steel. The exterior covers shall be minimum 16 gauge steel and shall have pad locking provisions. The housing and covers shall be zinc coated and protected against corrosion in accordance with U.L. 50, cabinets and boxes Section B.
10. After installation the meter socket housing and Service Disconnect housing shall be painted with the same paint as the cabinet to which it is attached.
11. All interior components shall be UL listed.
12. The Meter socket housing and Service Disconnect housing shall be NEMA 3R rated.
13. Meter socket housing and Service Disconnect housing shall be installed on the back of load center cabinets or control cabinets when required by the plans. Use 4-3/8" cadmium plated bolts, nuts and washers to secure meter socket housing to cabinets.
14. The Service disconnect housing shall be constructed of the same type and gage material as the EUSERC Meter Socket unless no Meter Socket is required by the plans. If no EUSERC Meter Socket is required then the Service disconnect housing shall be constructed of the same type and gage material as the Signal Control Cabinet or the Load Center Cabinet to which it is mounted. The exterior covers shall be of this same type and gauge material and shall have pad locking provisions. The housing and covers shall be finished with the same requirements as the Signal Control Cabinet or the Load Center Cabinet to which it is mounted.

FRONT VIEW LOWER COVER REMOVED



100 AMP EUSERC METER SOCKET DETAIL

FRONT VIEW



SERVICE DISCONNECT DETAIL

DESIGN APPROVED	SIGNATURE	ARIZONA DEPT. OF TRANSPORTATION	REV.
APPROVED FOR DISTRIBUTION		INTERMODAL TRANSPORTATION DIVISION	
	ON FILE	TRAFFIC SIGNALS & LIGHTING	
		STANDARD DRAWINGS	
		125 AMP, 120/240 OR 240/480 VOLT, SINGLE PHASE METER SOCKET AND SERVICE DISCONNECT DETAILS	DRAWING NO. T.S. 3-17