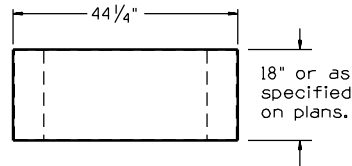
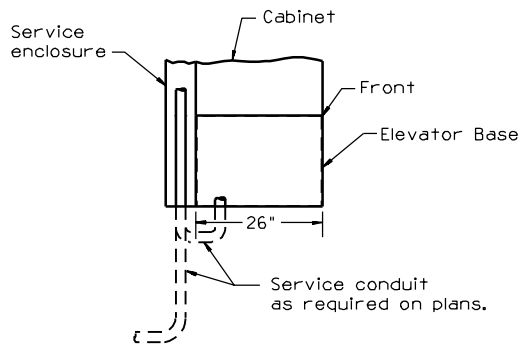


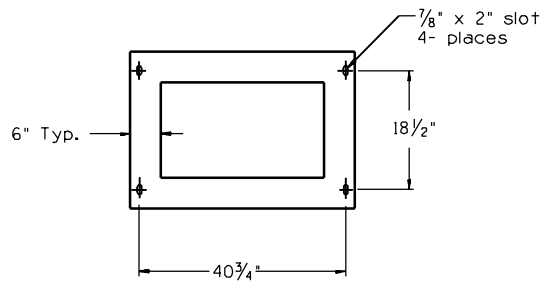
TOP



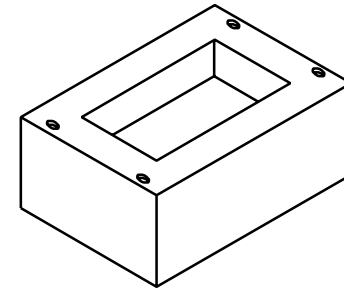
FRONT



SIDE



BOTTOM



**NOTES:**

1. Dimensions for the base may have to be modified slightly due to control cabinet and service enclosure manufacturer variation. The contractor, shall verify these dimensions with the manufacturers.
2. Material - 5052-H32 sheet aluminum alloy, thickness 0.190 inch.
3. All exterior and interior seams shall be continuously welded by the Hellarc welding method.
4. Finish - unpainted.
5. Install on Type IV Control Cabinet foundation. Anchor bolts to be furnished with cabinet. See T.S.2-4.
6. There will be no direct payment for the elevator base, the cost being considered as part of the control cabinet item.
7. For Type IV Load Center Cabinet elevator base, see T.S. 3-2 for dimensions.

DESIGN APPROVED	<b>SIGNATURE</b>	ARIZONA DEPT. OF TRANSPORTATION INTERMODAL TRANSPORTATION DIVISION TRAFFIC SIGNALS & LIGHTING STANDARD DRAWINGS	REV.
APPROVED FOR DISTRIBUTION		<b>ON FILE</b>	DRAWING NO. T.S. 3-14
		ELEVATOR BASE FOR TYPE IV CONTROL CABINET	