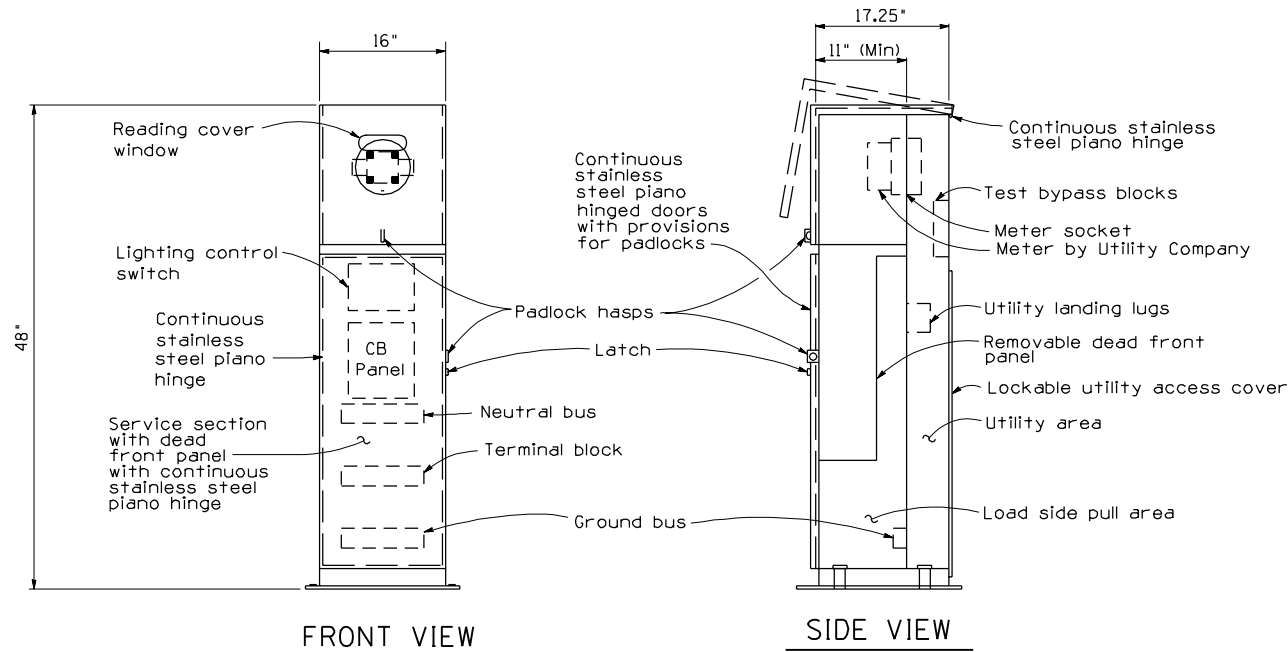


NOTES:

1. Circuit breaker sizes shall be as shown unless specified otherwise.
2. Circuit breakers shall be the molded case, thermal magnetic, plug-in type with a minimum fault interrupting capacity of 10,000 amperes.
3. The meter pedestal cabinet shall be NEMA 3R rated.
4. Voltage ratings of service equipment shall conform to the service voltages indicated on the plans.
5. Unless otherwise indicated on the plans, all meter pedestal equipment items shall be provided for each meter pedestal as shown.
6. The meter pedestal enclosure shall be fabricated from zinc coated 14 gauge steel.
7. Contractor shall provide meter socket and service disconnect per the requirements of the utility company.
8. See T.S. 3-19 for wiring diagrams.
9. See T.S. 2-6 for foundation detail.



PLAN SYMBOL

DESIGN APPROVED	SIGNATURE	ARIZONA DEPT. OF TRANSPORTATION INTERMODAL TRANSPORTATION DIVISION TRAFFIC SIGNALS & LIGHTING STANDARD DRAWINGS	REV.
APPROVED FOR DISTRIBUTION		ON FILE	DRAWING NO. T.S. 3-13
		METER PEDESTAL CABINET	