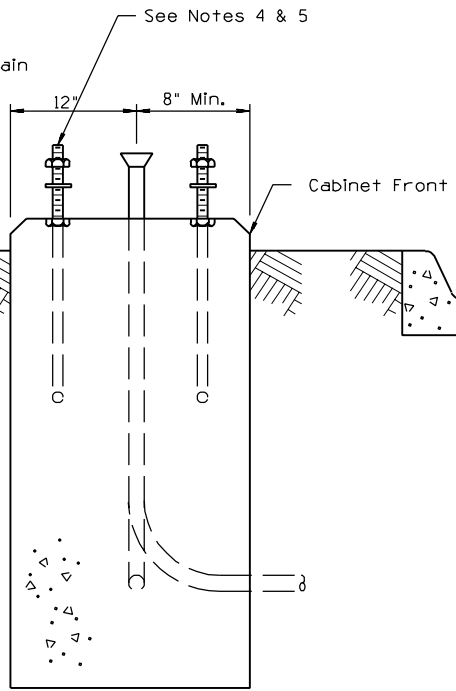
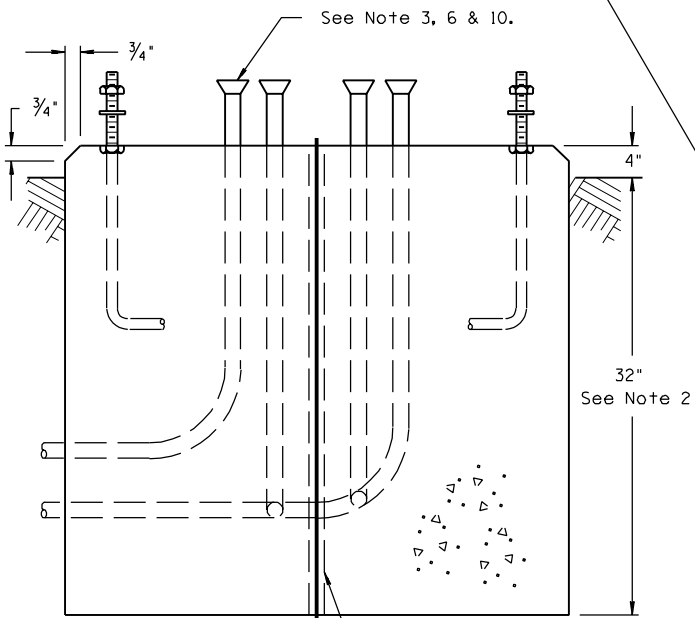
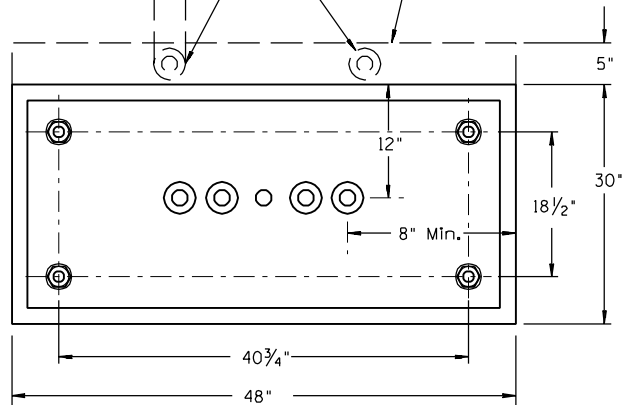


See Note 12.

Back side of foundation shall be increased 5" when EUSERC Meter Socket or EUSERC utility pull section and/or Service Disconnect enclosure are required as shown on plans. See T.S. Drawings for details.



**NOTES:**

1. All materials and construction shall conform to the requirements of the Specifications.
2. Unstable soil may require deeper foundations. See Specifications.
3. For conduit size, location, and quantity, see plans.
4. Anchor bolts shall be galvanized 3/4" x 12" x 4" complete with nuts and washers.
5. Anchor bolt's projection above foundation shall be 2" min. 2 1/2" max.
6. Conduit projection above foundation shall be 2" min. 4" max.
7. Use an approved Silicon Sealer RTV Type Grey in color or Clear, between cabinet and foundation.
8. In unpaved areas a raised PCC pad 36" x 4" x width of foundation, shall be placed in front of the cabinet. Pad shall be set 2" below the foundation elevation. Slope pad away from cabinet. See pad detail on T.S.2-1
9. All cabinet foundations shall have a 5/8" x 10' Bonded Copper Ground Rod with clamp.
10. Install 1-3" conduit for future use stubbed and capped 24" past the edge of the foundation as directed by the Engineer.
11. 1" sleeve (for ground rod) shall be inserted when foundation is poured. Install a 5/8" x 10' bonded copper ground rod.
12. 4" sleeves for Service conduits if EUSERC Meter Socket or EUSERC utility pull section and/or Service Disconnect enclosure are required.

See Note 11

DESIGN APPROVED	<b>SIGNATURE</b>	ARIZONA DEPT. OF TRANSPORTATION INTERMODAL TRANSPORTATION DIVISION TRAFFIC SIGNALS & LIGHTING STANDARD DRAWINGS	REV.
APPROVED FOR DISTRIBUTION		FOUNDATION FOR TYPE IV, V CONTROL CABINETS	DRAWING NO. T.S. 2-4
<b>ON FILE</b>			