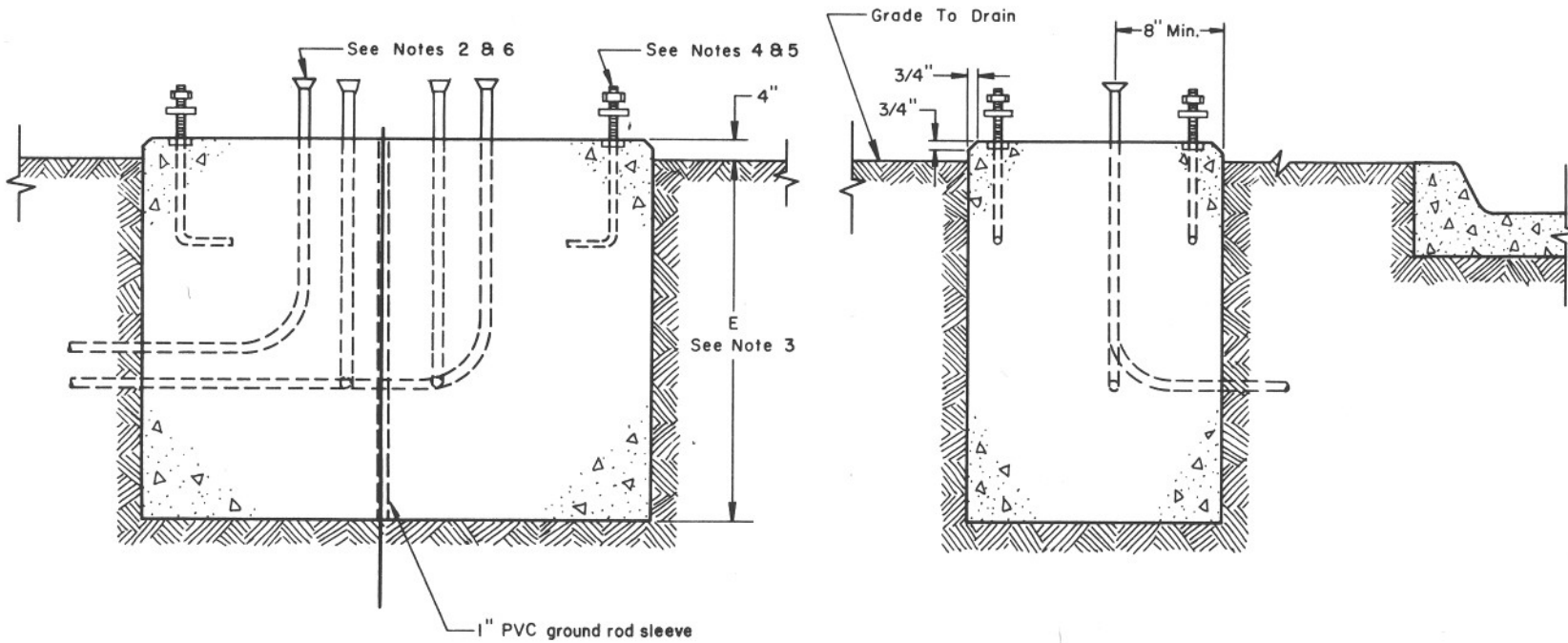
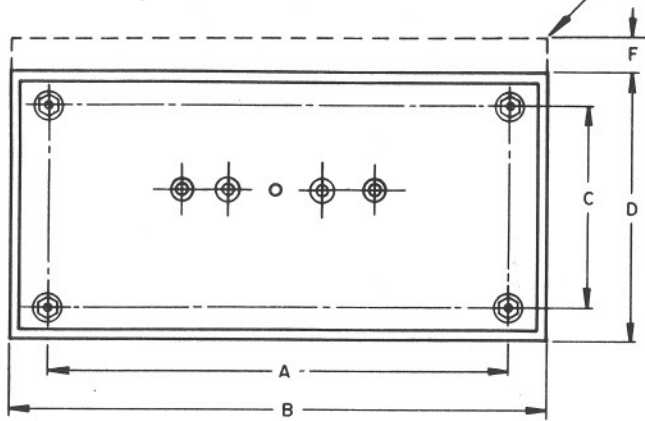


Back side of foundation shall be increased 5" when service enclosure on T.S.3-14 is required as shown on plans.



**NOTES:**

1. All materials and construction shall conform to the requirements of the Specifications.
2. See plans for conduit size, location, and quantity.
3. Unstable soil may require deeper foundation see Specifications.
4. Anchor bolts shall be galvanized steel, 3/4" x 11" x 5", complete with nuts and washers.
5. Anchor bolts shall project a minimum of 2" and a maximum of 2 1/2" above foundation.
6. Conduit shall project a minimum of 2" and a maximum of 4" above the foundation, except for conduit for ground rod, which shall be flush with surface.
7. Use grout, or mastic, to seal gap between cabinet and foundation.
8. In unpaved areas a raised PCC pad 36" x 4" x width of foundation, shall be placed in front of cabinet. Pad shall be set 2" below the foundation elevation. Slope pad away from cabinet. See pad detail T.S. 2-1.
9. All cabinet foundations shall have a 5/8" x 10' bonded copper ground rod.
10. Install 2-2" conduits for future use stubbed and capped 2' past the edge of the foundation as directed by the engineer.

DIMENSION	Type IV & V Control Cabinet
A	40 3/4"
B	48"
C	18 1/2"
D	30"
E	32"
F	5"

DESIGN APPROVED <i>R. J. ...</i> 12/14/87	STATE OF ARIZONA DEPARTMENT OF TRANSPORTATION DIVISION OF HIGHWAYS STANDARD DRAWINGS	REV. 11-23-87
APPROVED FOR DISTRIBUTION <i>R. J. ...</i>	FOUNDATION FOR TYPE IV, V CONTROL CABINETS	DRAWING NO. T.S. 2-3