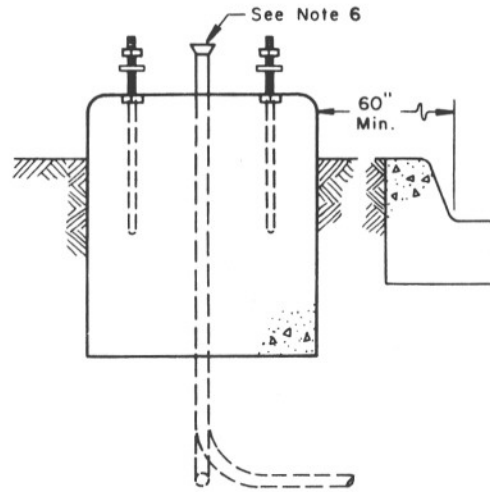
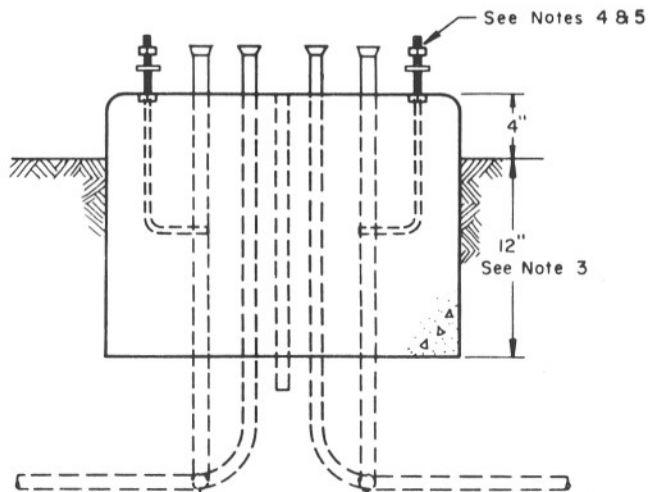


TYPICAL PAD DETAIL FOR ALL
LOAD CENTER AND CONTROL CABINETS

NOTES:

1. All materials and construction shall conform to the requirements of the Specifications.
2. See plans for conduit size, location, and quantity.
3. Unstable soil may require deeper foundations. See Specifications.
4. Anchor bolts shall be galvanized steel, 1/2" x 12" x 4", complete with nuts and washers.
5. Anchor bolts shall project a minimum of 1 1/2" and a maximum of 2" above foundation.
6. Conduit shall project a minimum of 2" and a maximum of 4" above the foundation, except for conduit for ground rod, which shall be flush with surface.
7. Use grout, or mastic, to seal gap between cabinet and foundation.
8. 1" sleeve (for Ground Rod) shall be inserted when foundation is poured. Install a 5/8"x10' bonded copper ground rod.
9. In unpaved areas a raised PCC pad 36" x 4" x width of foundation shall be placed in front of cabinet. Pad shall be set 2" below the foundation elevation. Slope pad away from cabinet.
10. Install 2-2" conduits for future use stubbed and capped 2' past the edge of the foundation as directed by the engineer.



| | | |
|--|---|-------------------------|
| DESIGN APPROVED <i>[Signature]</i> 12/14/81 | STATE OF ARIZONA DEPARTMENT OF TRANSPORTATION DIVISION OF HIGHWAYS STANDARD DRAWINGS | REV 11-23-87 |
| APPROVED FOR DISTRIBUTION <i>[Signature]</i> | FOUNDATION FOR TYPE II LOAD CENTER CABINET | DRAWING NO. T.S. 2-1 |