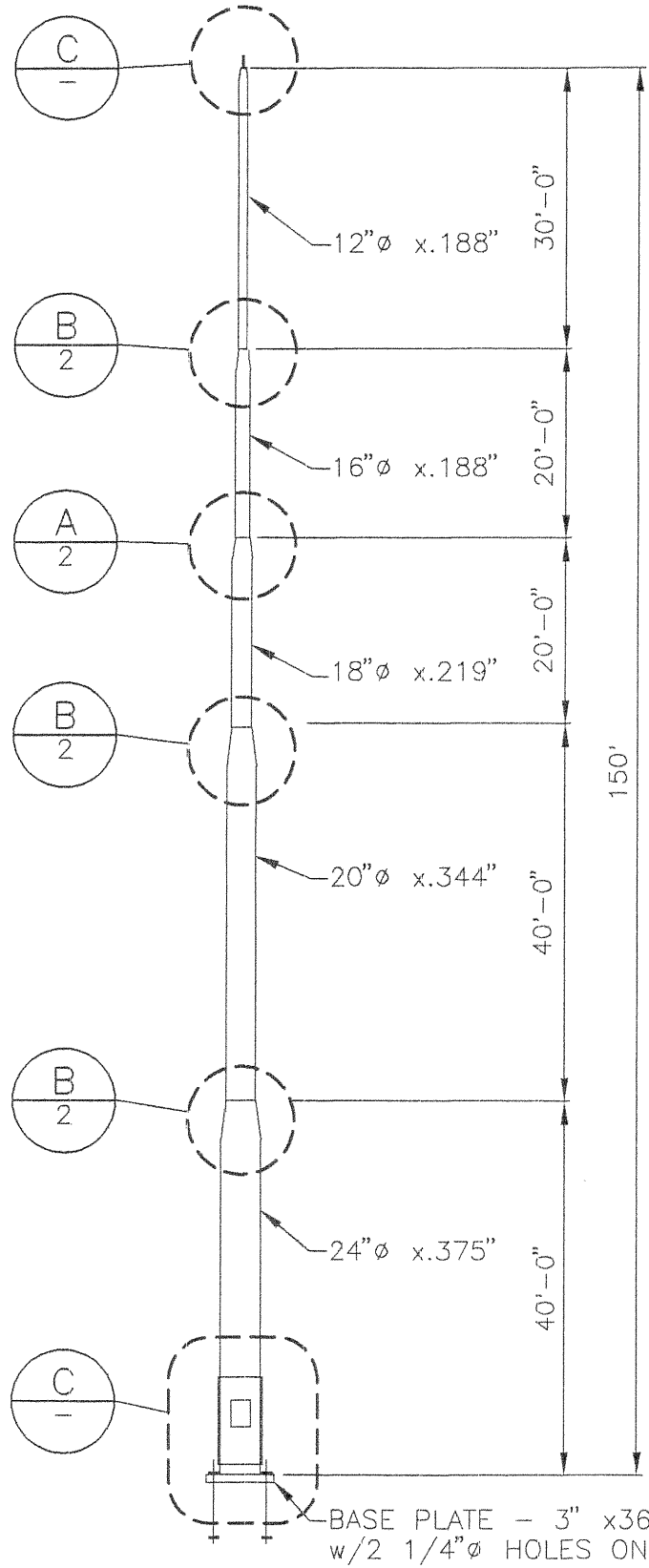
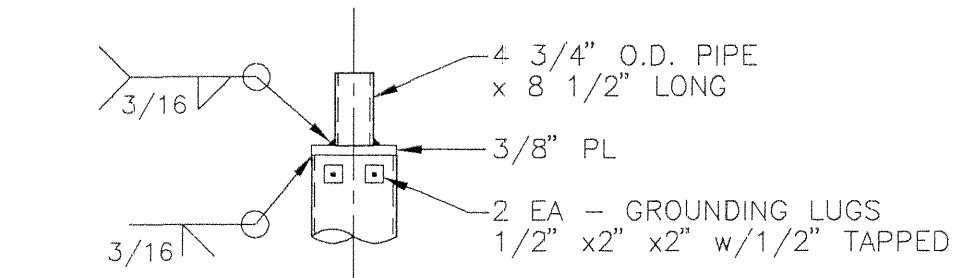


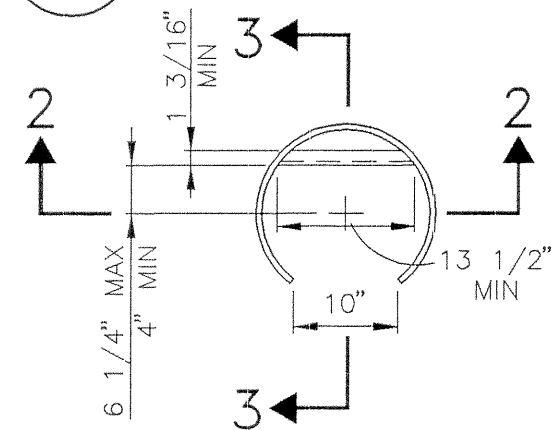
CT-150P 12-30-97 13:54 mz (plot - "limits" @ 1=32 for 11x17)



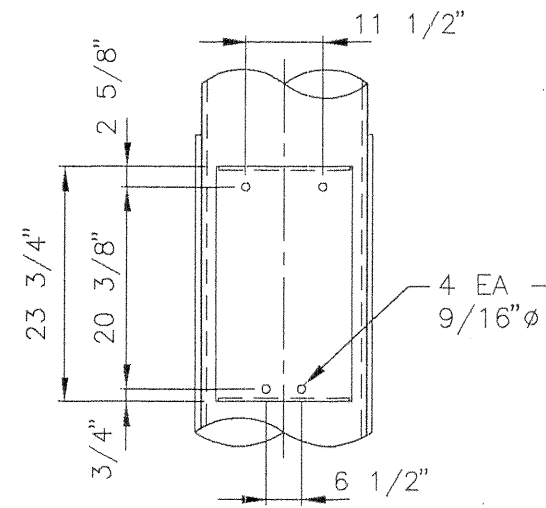
POLE ASSEMBLY



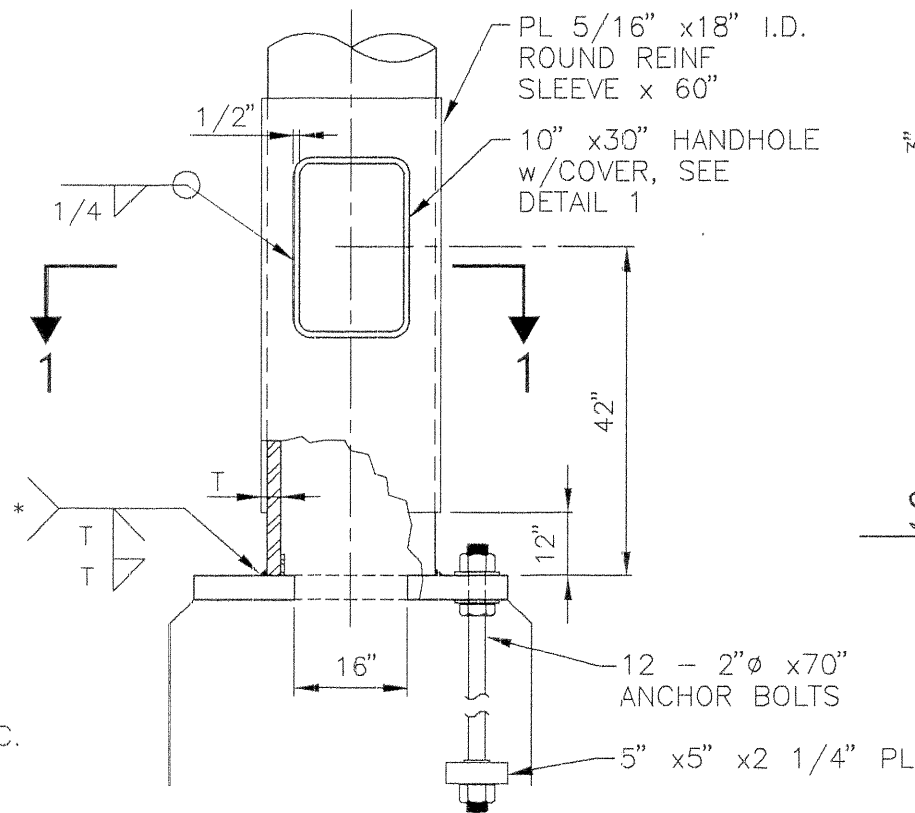
TOP DETAIL



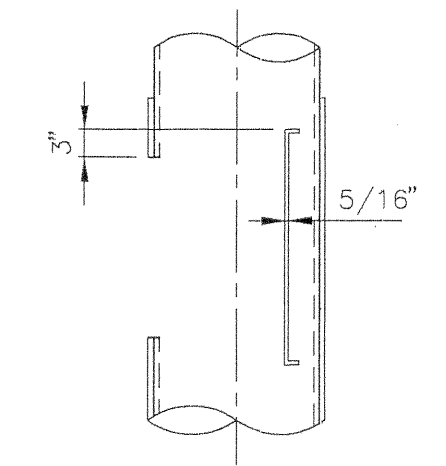
SECTION 1-1



SECTION 2-2



BASE DETAIL



SECTION 3-3

NOTES

1. CONSTRUCTION - ARIZONA DEPARTMENT OF TRANSPORTATION STANDARD SPECIFICATIONS FOR ROAD AND BRIDGE CONSTRUCTION, 1990 EDITION, AND THE ADOT 1985 TRAFFIC SIGNALS & LIGHTING STANDARD DRAWINGS.
2. ANALYSIS AND DESIGN - AASHTO STANDARD SPECIFICATIONS FOR STRUCTURAL SUPPORTS FOR HIGHWAY SIGNS, LUMINARIES AND TRAFFIC SIGNALS, 1994.
3. PIPE SHALL HAVE MINIMUM YIELD STRENGTH OF 42 KSI.
4. WELDED REDUCERS SHALL BE PER ASTM A234 WPR OR A234 WPB WITH MIN WELD = 42 KSI.
5. ALL OTHER STEEL SHALL BE PER ASTM A36 OR A53B.
6. ANCHOR BOLTS SHALL BE PER SHEET NO. 2.
7. WELDING SHALL CONFORM TO AWS D1.1 (LATEST EDITION)
8. POLE SHALL BE GALVANIZED PER ASTM A123.

APPROVED	✓
APPROVED AS NOTED	
REVISE AND RESUBMIT	
DISAPPROVED	
<i>A. Wojcikiewicz</i>	
DATE	Jan. 30, 1998
<small>REVIEW IS ONLY FOR GENERAL CONFORMITY TO THE CONTRACT DRAWINGS AND SPECIFICATIONS, AND SHALL NOT RELIEVE THE CONTRACTOR OF HIS ENTIRE RESPONSIBILITY UNDER THE CONTRACT, INCLUDING, AMONG OTHER THINGS, DIMENSIONS TO BE CONFIRMED AND CORRECTED AT THE JOB SITE, AND INFORMATION THAT PERTAINS TO THE FABRICATION PROCESSES OR TO TECHNIQUES OF CONSTRUCTION.</small>	
PARSONS, BRINCKERHOFF QUADE & DOUGLAS, INC. 1501 W. FOUNTAINHEAD PKWY. SUITE 400 TEMPE, ARIZONA 85282	

CT 4M-150-36 sheet 1

<b>CEM-TEC</b>	
150 FT. HI-MAST POLE	
DESIGNER R.A.Y.	SUPERVISOR H.P.E.
-	FIELD INSPECTION

