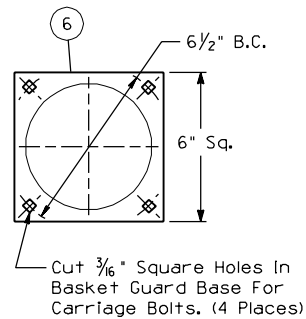
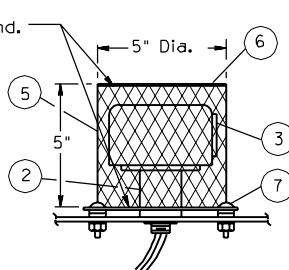


MOUNT A

MATERIAL LIST		
Item	Qty.	Description
1	1	Photo Electric Cell Basket Guard (5" Dia.)
2	1	Mounting Receptacle, Locking Type.
3	1	Photo Electric Cell.
4		Conduit Bushing.
5		1/2" No. 16 Carbon Steel Flattened Expanded Metal.
6		1/16" Sheet Metal.
7	4	(1) 3/16" x 3/4" Carriage Bolt, (3) Flat Washers, (1) Lock Washer, & (1) Hex Nut Per Fastening.

Tack Weld Top & Bottom All Around.



BASKET GUARD DETAIL

NOTES:

1. Orient Photo Electric Cell to face North.
2. All conduit connections shall be watertight.
3. See the Specifications for Photo Electric Cell Specifications.

DESIGN APPROVED	SIGNATURE	ARIZONA DEPT. OF TRANSPORTATION INTERMODAL TRANSPORTATION DIVISION TRAFFIC SIGNALS & LIGHTING STANDARD DRAWINGS	REV.
APPROVED FOR DISTRIBUTION		ON FILE	PHOTO ELECTRIC CELL MOUNTING DETAILS
		DRAWING NO. T.S. 15-1	