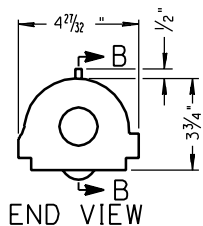
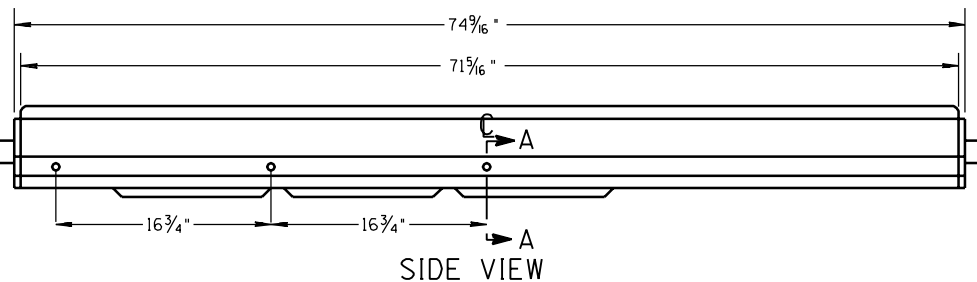


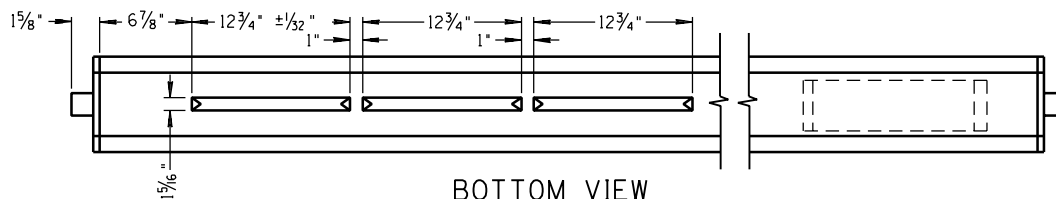
FIXTURE LENS



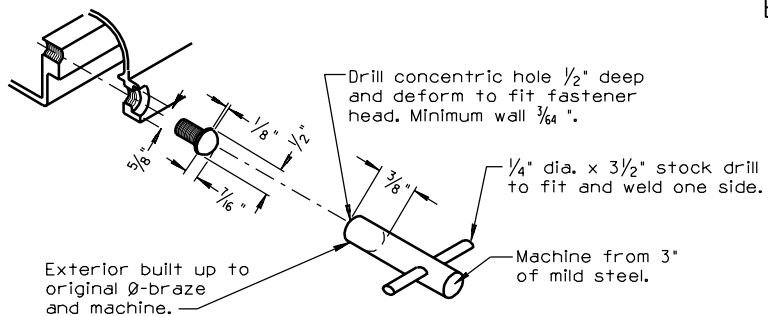
END VIEW



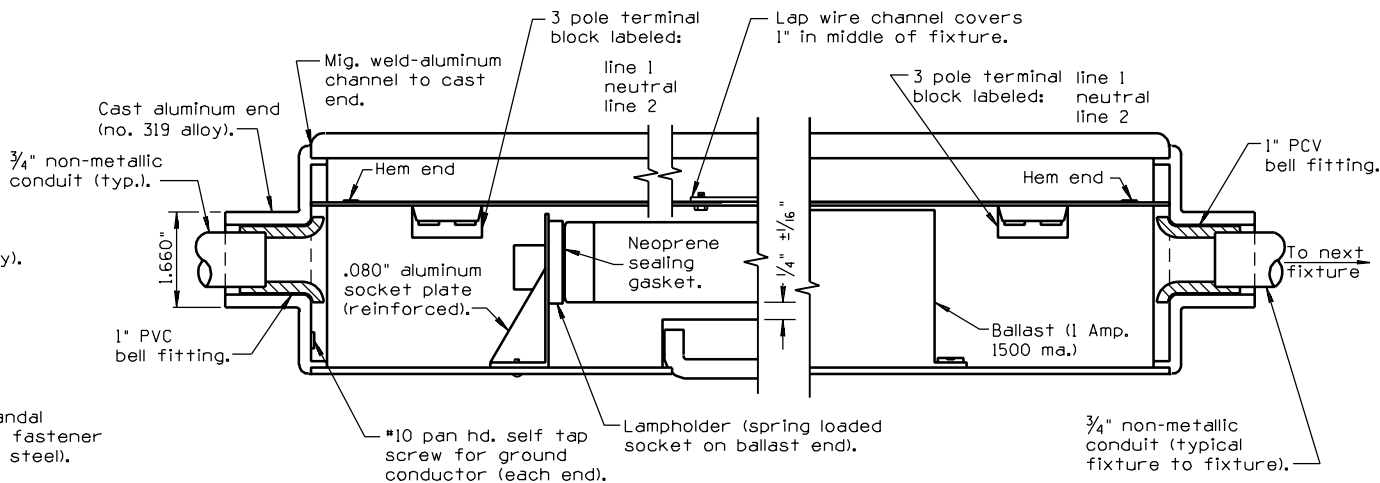
SIDE VIEW



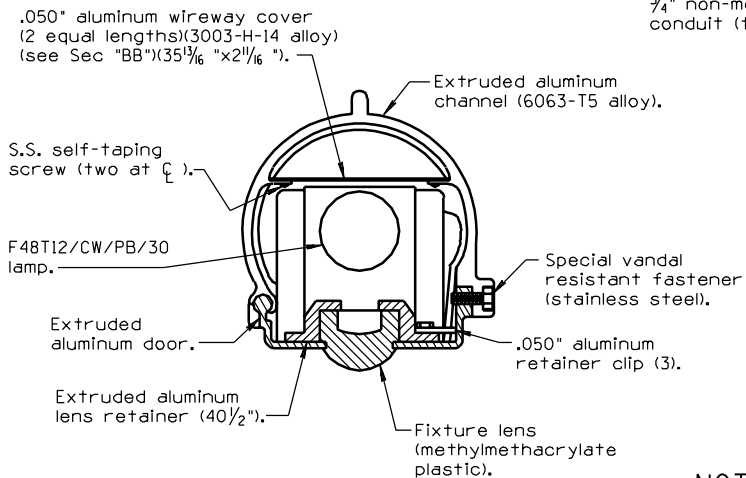
BOTTOM VIEW



FASTENERS & WRENCH



SECTION B-B



SECTION A-A

NOTES:

1. 3/4" non-metallic conduits to be installed between each fixture.

DESIGN APPROVED	SIGNATURE	ARIZONA DEPT. OF TRANSPORTATION	REV.
APPROVED FOR DISTRIBUTION		INTERMODAL TRANSPORTATION DIVISION	
	ON FILE	TRAFFIC SIGNALS & LIGHTING	
		STANDARD DRAWINGS	
		PEDESTRIAN BRIDGE	DRAWING NO.
		LIGHTING DETAILS	T.S. 14-1