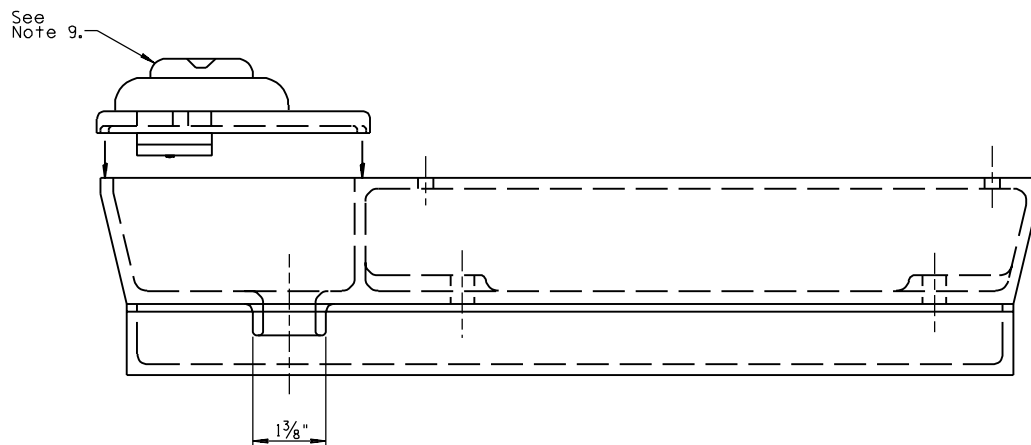


PLAN SYMBOL



**NOTES:**

1. The Type I push button shall be used unless otherwise specified.
2. Material shall be Aluminum Alloy.
3. Diameter of casting back to correspond with pole diameter.
4. Push button shall contain a momentary contact switch with normal open contact.
5. Pole installation bolts, sign screws and washers shall be furnished with unit.
6. Push button cover shall be rain and dust proof.
7. Paint as per Specifications.
8. For pedestrian sign detail see T.S. 11-3 or T.S. 11-4.
9. ADA push button body and switch assembly.

DESIGN APPROVED	<b>SIGNATURE</b>	ARIZONA DEPT. OF TRANSPORTATION INTERMODAL TRANSPORTATION DIVISION TRAFFIC SIGNALS & LIGHTING STANDARD DRAWINGS	REV.
APPROVED FOR DISTRIBUTION		<b>ON FILE</b>	DRAWING NO. T.S. 11-1