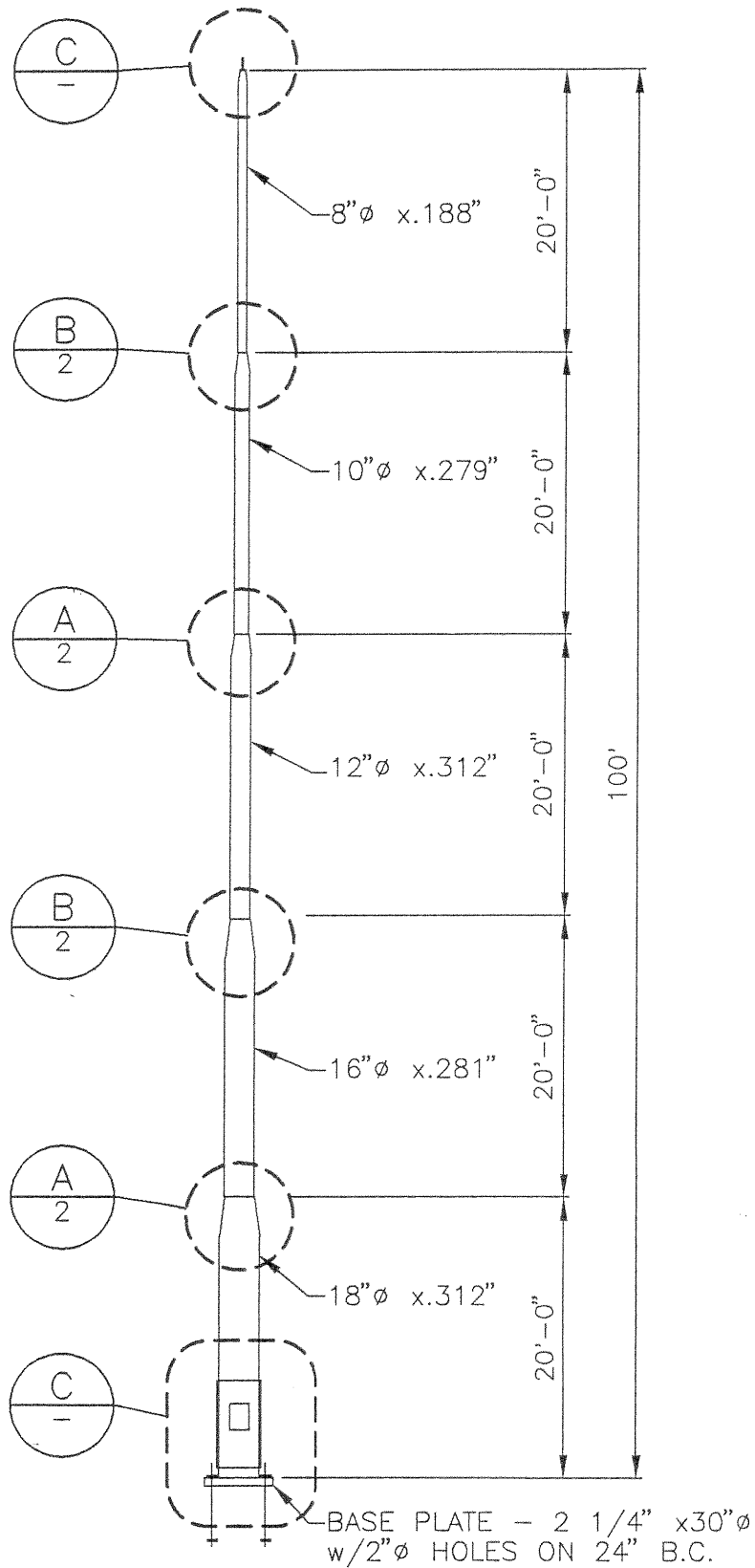
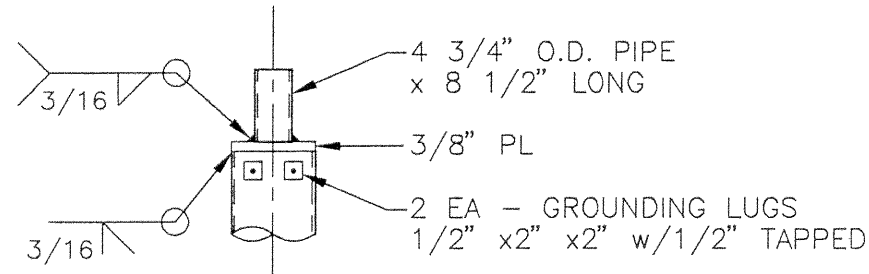


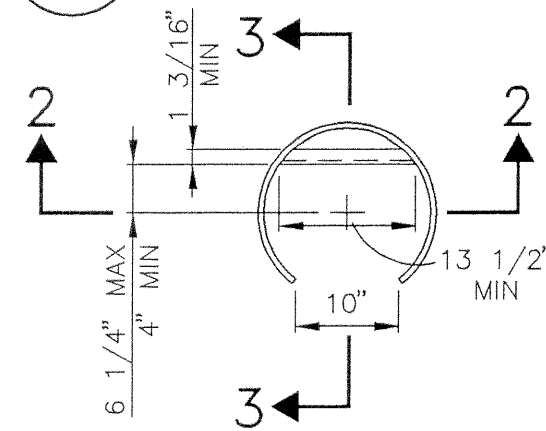
file: CT-100P.dwg 4-6-98 R.Y.E. (plot @ 1=32, limits)



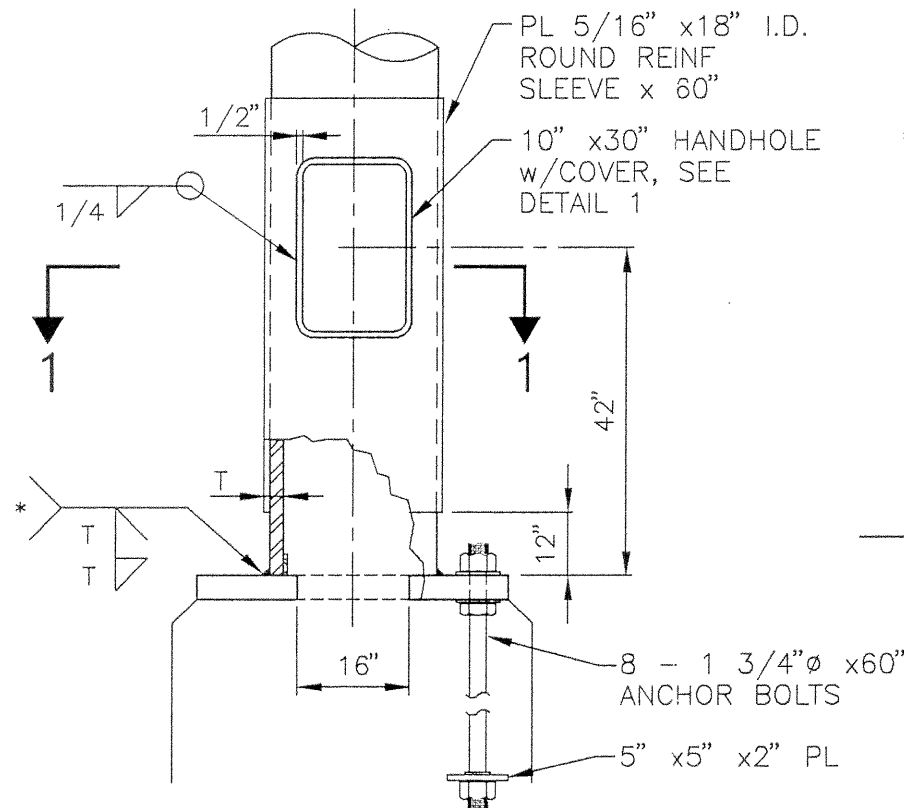
POLE ASSEMBLY



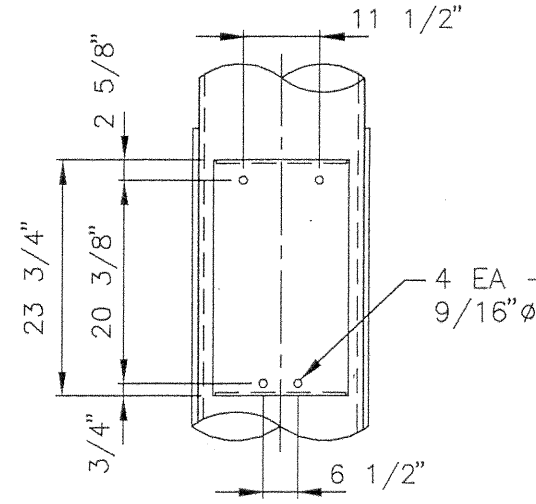
TOP DETAIL



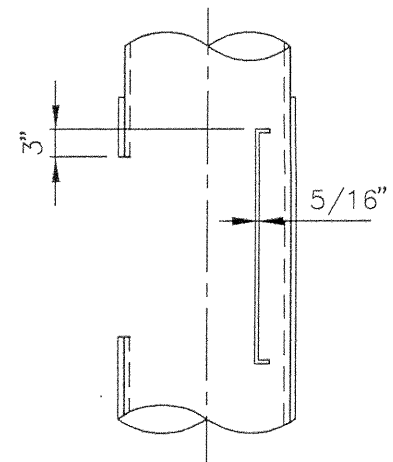
SECTION 1-1



BASE DETAIL



SECTION 2-2



SECTION 3-3

NOTES

1. CONSTRUCTION - ARIZONA DEPARTMENT OF TRANSPORTATION STANDARD SPECIFICATIONS FOR ROAD AND BRIDGE CONSTRUCTION, 1990 EDITION, AND THE ADOT 1985 TRAFFIC SIGNALS & LIGHTING STANDARD DRAWINGS. ANALYSIS AND DESIGN - AASHTO STANDARD SPECIFICATIONS FOR STRUCTURAL SUPPORTS FOR HIGHWAY SIGNS, LUMINARIES AND TRAFFIC SIGNALS, 1994.
2. PIPE SHALL HAVE MINIMUM YIELD STRENGTH OF 42 KSI.
3. WELDED REDUCERS SHALL BE PER ASTM A234WPB.
4. ALL OTHER STEEL SHALL BE PER ASTM A36 OR A53B.
5. ANCHOR BOLTS SHALL BE PER SHEET NO.
6. WELDING SHALL CONFORM TO AWS D1.1 (LATEST EDITION)
7. POLE SHALL BE GALVANIZED PER ASTM A123.

APPROVED	✓
APPROVED AS NOTED	
REVISE AND RESUBMIT	
DISAPPROVED	
DATE	Apr. 8, 98
REVIEW IS ONLY FOR GENERAL CONFORMITY TO THE INTENT OF DRAWINGS AND SPECIFICATIONS AND SHALL NOT RELIEVE THE CONTRACTOR OF HIS RESPONSIBILITY FOR THE DESIGN, INCLUDING, AMONG OTHERS, THE DIMENSIONS TO BE CONFORMED TO AND DELIVERED AT THE JOB SITE. THE CONTRACTOR IS RESPONSIBLE FOR THE PROPER CONSTRUCTION OR TO TECHNIQUES OF CONSTRUCTION.	
PARSONS BRINCKERHOFF QUADE & DOUGLAS, INC. 1501 W. MOUNTAINHEAD PKWY. SUITE 400 TEMPE, ARIZONA 85282	

CEM-TEC	
100 FT. HI-MAST POLE	
DESIGNER R.A.Y.	SUPERVISOR H.P.E.
-	FIELD INSPECTION

Registered Professional Engineer
 5867
 ROBERT A
 YOUNG
 Date Signed: 4-7-98
 ARIZONA, U.S.A.

CT-HM-100-36