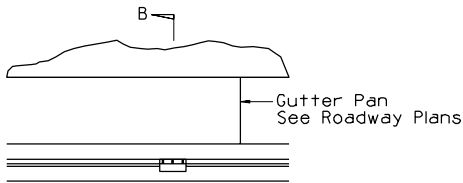


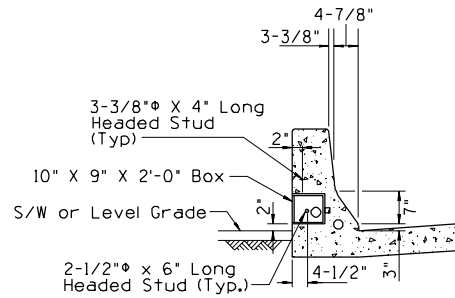
BOX ON BARRIER BACK DETAIL

NTS



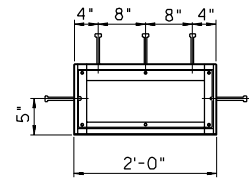
BOX ON BARRIER FACE DETAIL

NTS



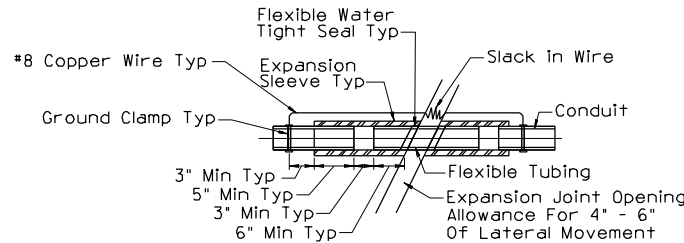
SECTION C-C

NTS



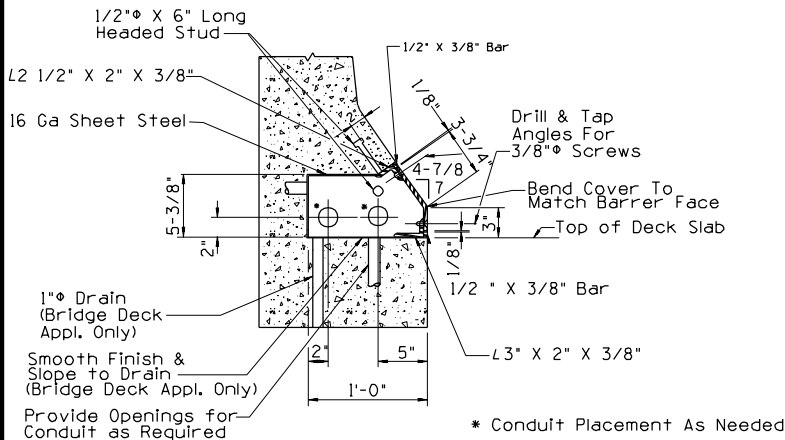
ELEVATION C-C

NTS



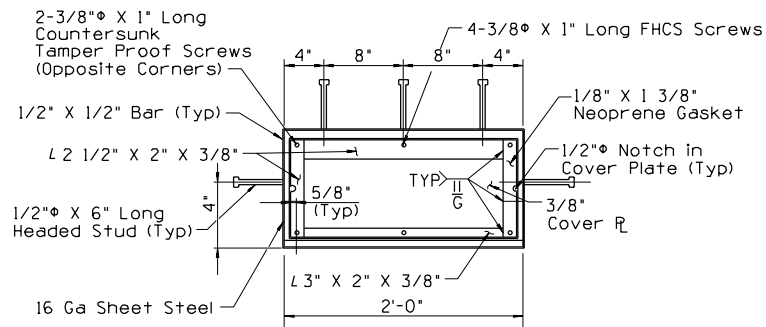
EXPANSION COUPLING DETAIL

NTS



SECTION B-B

NTS



ELEVATION B-B

NTS

NOTES:

1. Conduit size and location shall be as shown on the plans.
2. SEE ADOT STD Dwg B-21.30 for additional information.
3. See Structural plans for barrier details and reinforcing.
4. Cover plates shall have "ADOT ELECTRICAL HIGH VOLTAGE" in 1" letters.
5. The junction box shall be fabricated from sheet steel conforming to ASTM Standard. The sheet steel shall be bent and/or welded at corners to provide a complete and tight enclosure. Suitable openings shall be provided for entrance of electrical conduits and shall be effectively sealed by an approved method. The entire assembly shall be such as to prevent leakage into the box.
6. All frame and cover plates shall be of steel conforming with ASTM Standards.
7. All steel items shall be hot dipped galvanized after fabrication in accordance with ASTM Standards.
8. The installation of the steel studs shall conform to the latest edition/revision of AWS D1.1 and AASHTO Standard Specification for welding of structural steel highway bridges.
9. The neoprene gasket shall be continuous around cover frame space and secured to the frame.
10. Junction boxes and expansion couplings shall be approved by the Engineer prior to ordering.
11. Conduit knock-outs per construction plans.
12. Conduit connections to junction box shall be with threaded connectors.
13. Metallic boxes shall be bonded in an approved manner.

DESIGN APPROVED

SIGNATURE

ARIZONA DEPT. OF TRANSPORTATION
INTERMODAL TRANSPORTATION DIVISION
TRAFFIC SIGNALS & LIGHTING
STANDARD DRAWINGS

APPROVED FOR DISTRIBUTION

ON FILE

BARRIER JUNCTION BOX

DRAWING NO.

T.S. 1-9