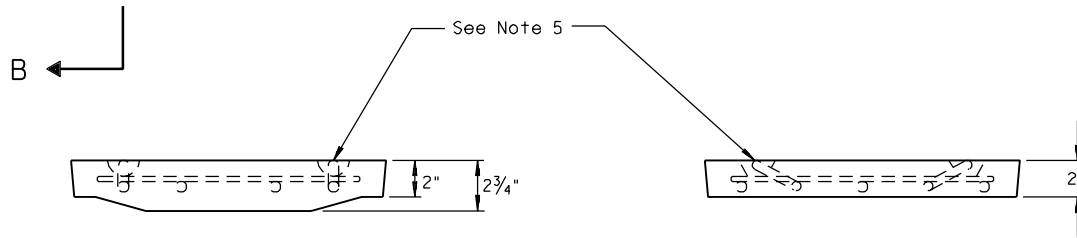
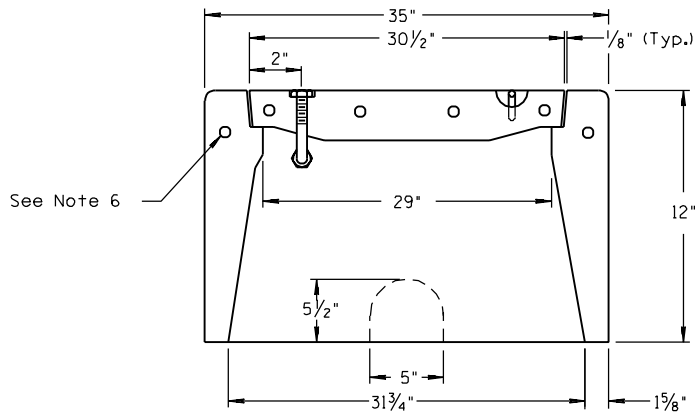


NOTES:

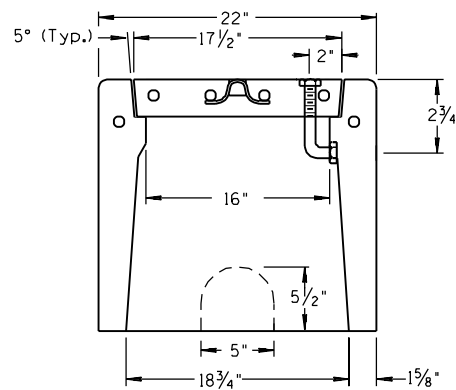
1. See the Specifications for material and construction.
2. Covers shall be secured with $\frac{3}{8}$ " "L" bolts, nuts and washers, which shall be of brass, stainless steel, or other corrosion resistant material. Stainless steel shall have a chromium content of not less than 18% and a nickel content of not less than 8%. Nuts shall be recessed below top surface of cover.
3. Cover lettering shall be 1" letters cast in standard markings, ADOT ELECTRICAL HIGH VOLTAGE.
4. See T.S. 1-8 for typical installation details.
5. See T.S. 1-1 for lift eye slot detail.
6. Steel reinforcing shall be as shown or an approved alternate reinforcement method must be submitted for approval.
7. All dimensions are nominal.



ALTERNATE PULL BOX COVER



SECTION A-A



SECTION B-B



PLAN SYMBOL

DESIGN APPROVED	SIGNATURE	ARIZONA DEPT. OF TRANSPORTATION INTERMODAL TRANSPORTATION DIVISION TRAFFIC SIGNALS & LIGHTING STANDARD DRAWINGS	REV.
APPROVED FOR DISTRIBUTION		ON FILE	DRAWING NO. NO. 7 CONCRETE PULL BOX T.S. 1-3