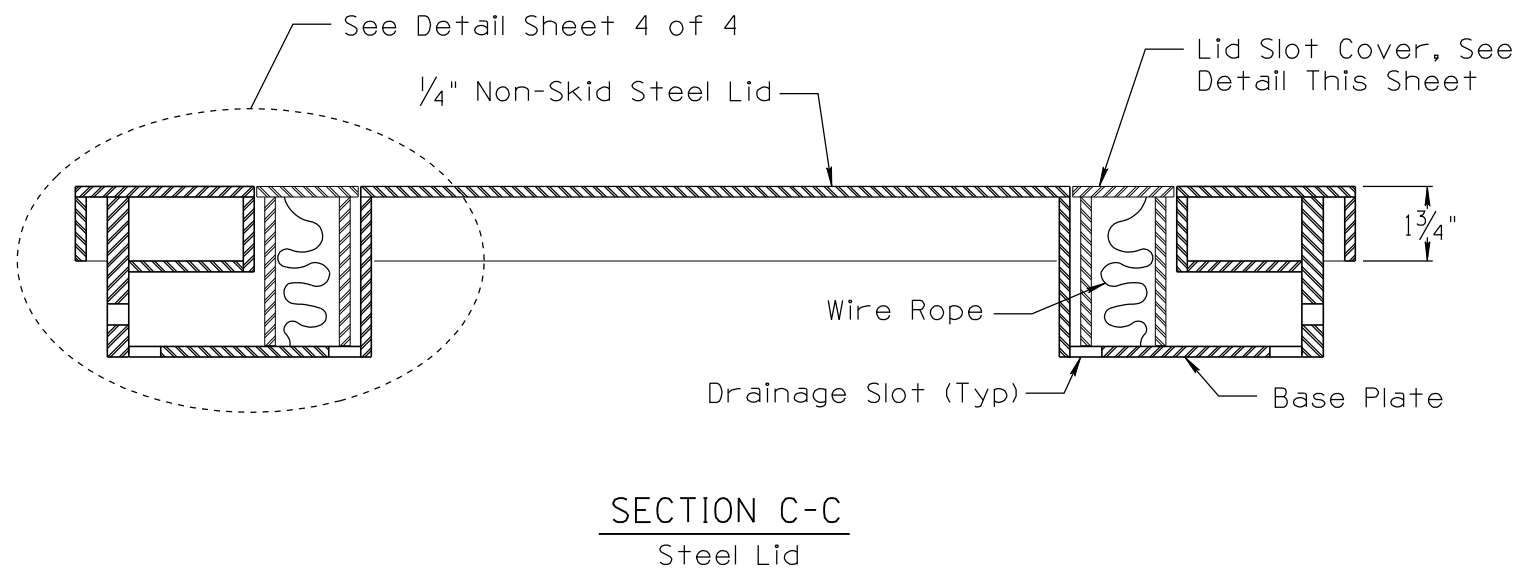


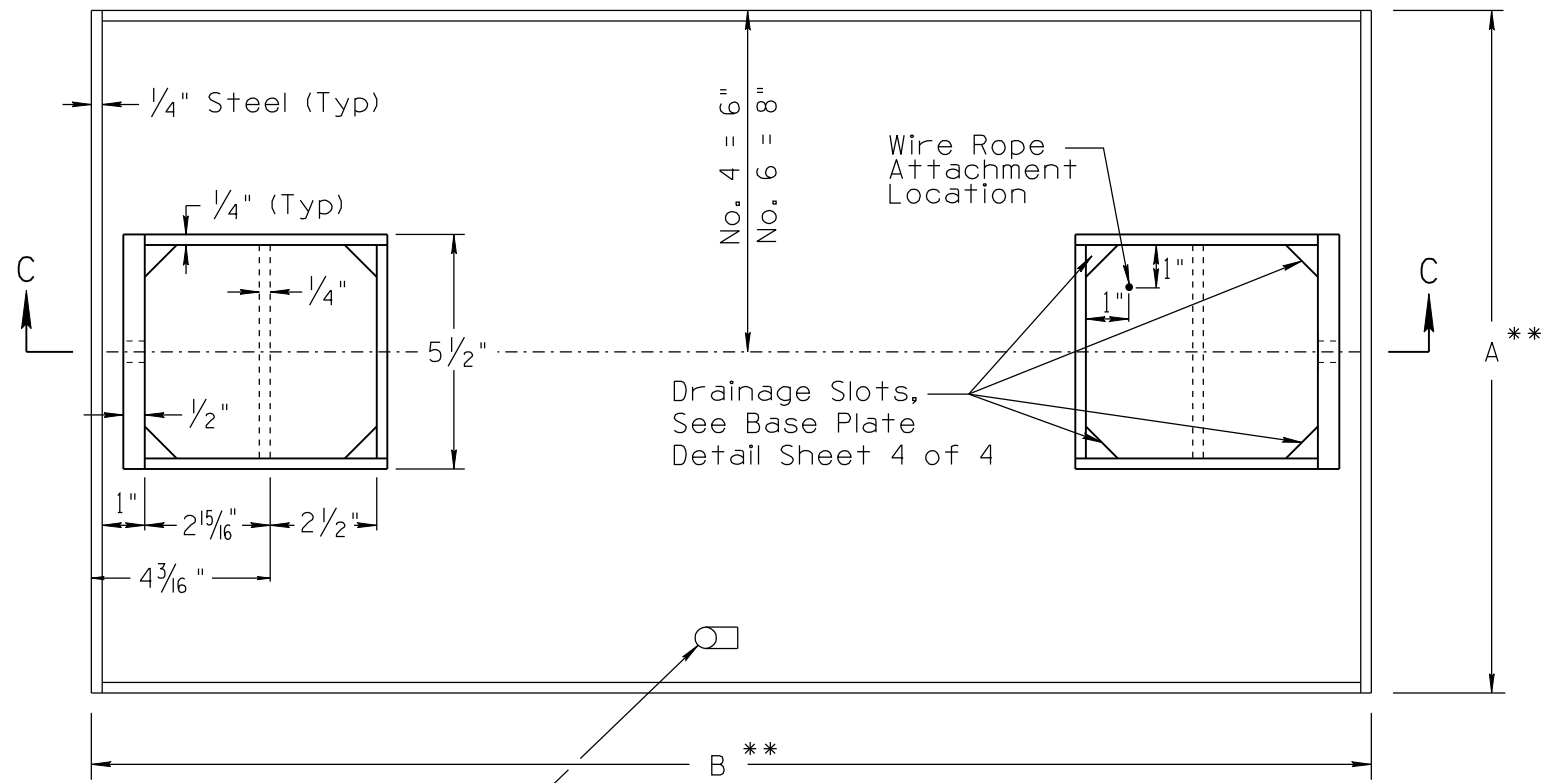
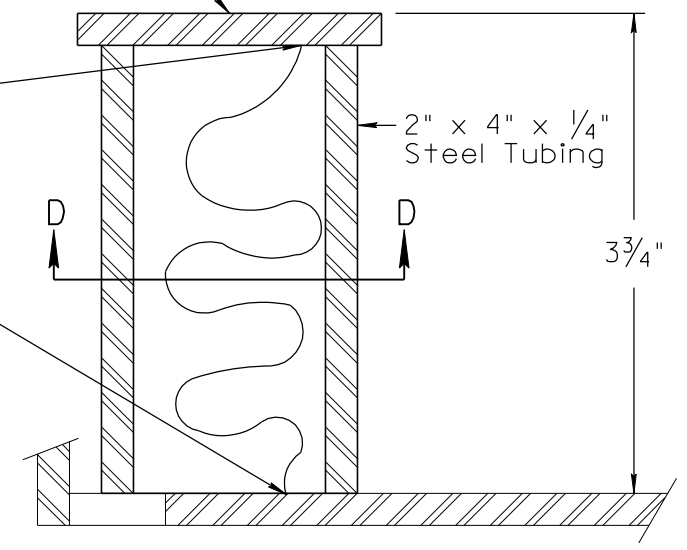
NO.	DESCRIPTION OF REVISIONS	DATE	MADE BY
3		09/11	C. COLE
4			



Reuse 2 1/2" x 5" Non-Skid Steel Cutout From Lid and Weld to 2" x 4" x 1/4" Steel Tubing to Underside

Attach 16" Long 18 Ga Stainless Steel Wire Rope with Swage Termination to Underside of Slot Cover with a Screw or Bolt

Attach 16" Long 18 Ga Stainless Steel Wire Rope with Swage Termination to Base Plate with a Screw or Bolt

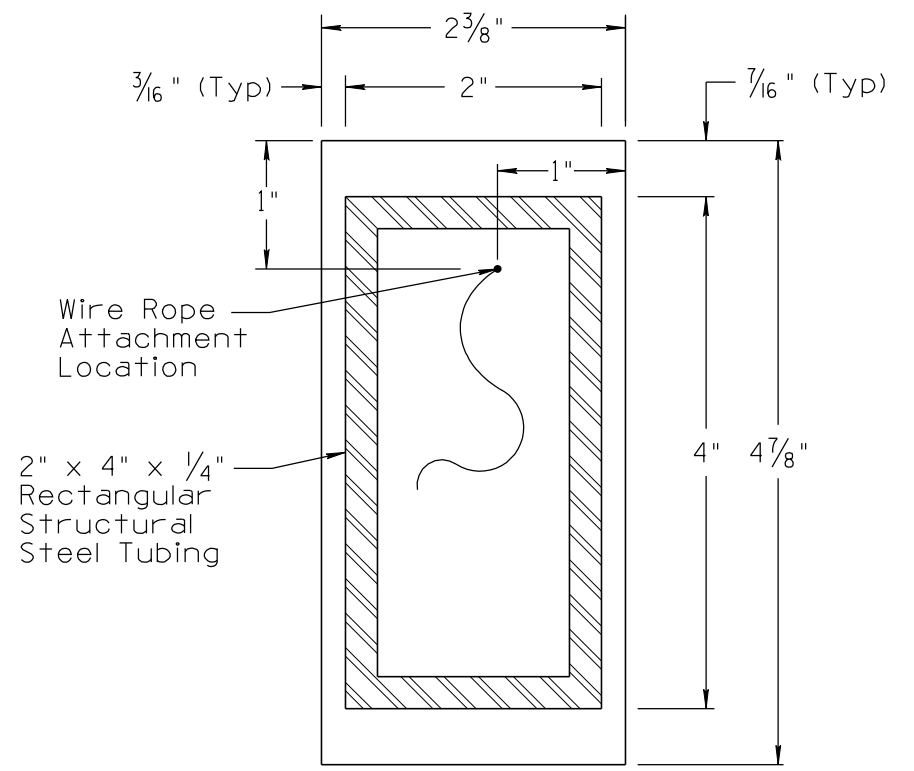


Single Hole or Welded Bolt for Single Barrel Bonding Lug with one 1/4" Hole and a Fixed Tongue Lug shall be Bolted to Underside of Steel Lid, as a Minimum the Lug shall be Rated at 70amps and for #4 to #14 AWG Conductor.

**LID BOTTOM VIEW**

\*\* See Sheet 1 of 4 for Alpha Dimensions

NOT TO SCALE



DESIGN APPROVED	ARIZONA DEPARTMENT OF TRANSPORTATION INTERMODAL TRANSPORTATION DIVISION TRAFFIC SIGNALS AND LIGHTING STANDARD DRAWINGS	REVISION 09/11
APPROVED FOR DISTRIBUTION	HEAVY DUTY LIGHTING NO. 4 AND NO. 6 PULL BOX LID	DRAWING NO. T.S. 1-11
		SHEET NO. 3 OF 4