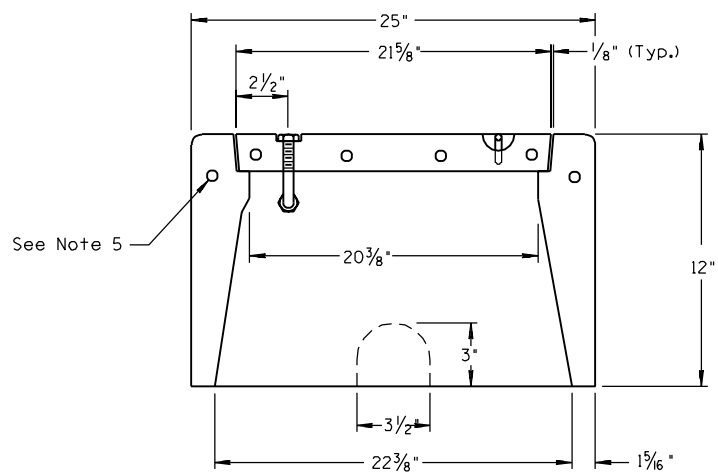
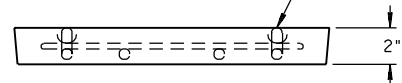
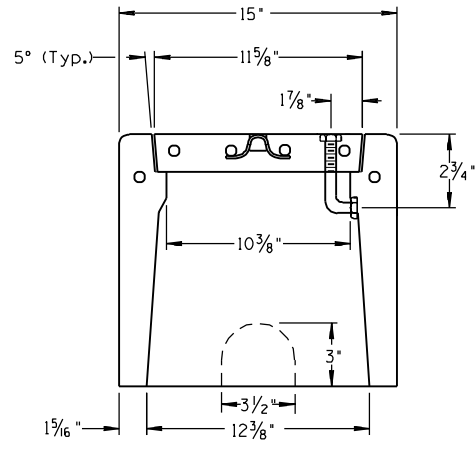


See SECTION C-C



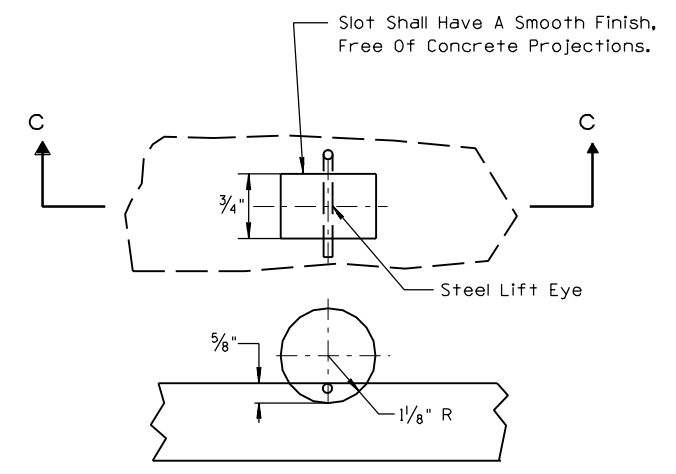
SECTION A-A



SECTION B-B

NOTES:

1. See the Specifications for material and construction.
2. Covers shall be secured with 3/8" "L" bolts, nuts, and washers, which shall be of brass, stainless steel, or other corrosion resistant material. Stainless steel shall have a chromium content of not less than 18% and a nickel content of not less than 8%. Nuts shall be recessed below top surface of cover.
3. Cover lettering shall be 1" letters cast in standard markings: ADOT ELECTRICAL HIGH VOLTAGE.
4. See T.S. 1-8 for typical installation details.
5. Steel reinforcing shall be as shown or an approved alternate reinforcement method must be submitted for approval.
6. All dimensions are nominal.



SECTION C-C
LIFT EYE SLOT DETAIL

□
PLAN SYMBOL

DESIGN APPROVED	SIGNATURE	ARIZONA DEPT. OF TRANSPORTATION INTERMODAL TRANSPORTATION DIVISION TRAFFIC SIGNALS & LIGHTING STANDARD DRAWINGS	REV.
APPROVED FOR DISTRIBUTION		NO. 5 CONCRETE PULL BOX	DRAWING NO. T.S. 1-1
ON FILE			