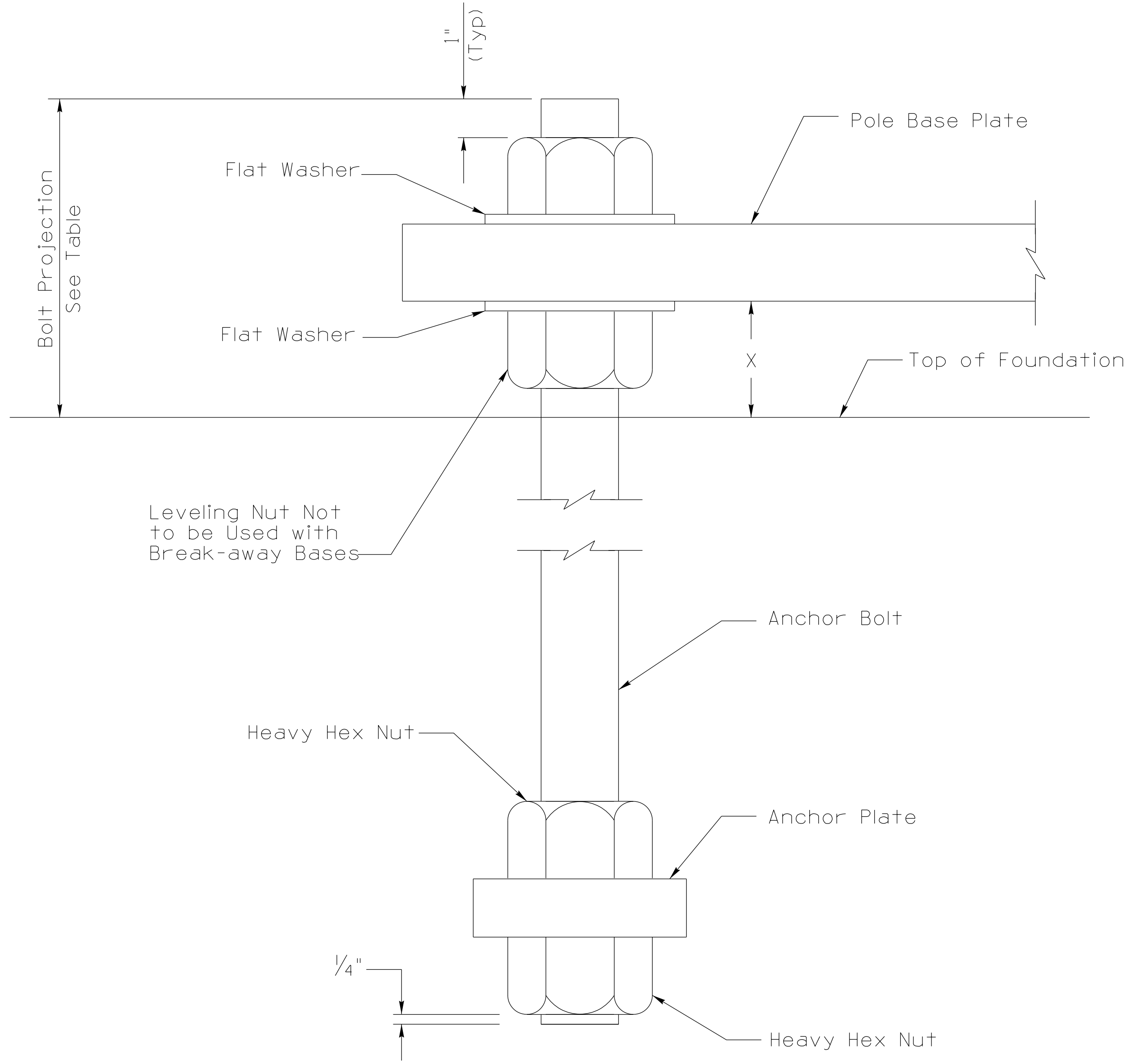


Note to Designer:
The information presented in this Standard Drawing has been prepared in accordance with recognized engineering principles and is for general use. It should not be used for specific application without competent professional examination and verification of its suitability and applicability by a licensed professional engineer. Contents within the inner border line shall not be altered.



ANCHOR BOLT DETAIL
(For Standard Base Applications)

STEEL POLE BASE PLATE THICKNESS	
POLE TYPE	THICKNESS
Ped Post	1/2" Min
G & S	1"
T	1 1/4"
J, Q, K, R, V, & W	2"
U Elliptical	3"
U Square	1 1/2" - 2"

NOTES:

- All anchor bolts shall be ASTM F1554 grade 55 steel.
- All anchor bolts, nuts and washers shall be fully galvanized per ASTM A153. Only the top 1'-8 of the anchor bolts shall be galvanized.
- Each anchor bolt shall have four hex nuts and two flat washers, all to be furnished with pole.
- See Std Dwg T.S. 5 series for additional foundation and anchor bolt details, and requirements for break-away bases.
- Washers with dimensions conforming to ASTM F436 may be used in lieu of the sizes in the table.

STANDARD DRAWING		ANCHOR BOLT WITH PLATE					
POLE TYPE	DWG No.	NOMINAL DIAMETER (inches)	FLAT WASHER THICKNESS	TOTAL LENGTH (inches)	SIZE OF ANCHOR PLATE (inches)	PROJECTION ABOVE FOUNDATION	X
A	T-SL 4.01	1"	1/8"	35"	3/4" x 2 3/4" x 2 3/4"	4 5/8" *	2"
G	T-SL 4.07	1 1/4"	1/8"	52"	7/8" x 3 1/2" x 3 1/2"	5 5/16" *	2"
G (Alum)	T-SL 4.08	1 1/4"	1/8"	36"	7/8" x 3 1/2" x 3 1/2"	5 5/16" *	2"
H (Alum)	T-SL 4.09	1 1/4"	1/8"	36"	7/8" x 3 1/2" x 3 1/2"	5 1/4" *	2"
I (Alum)	T-SL 4.10	1 1/4"	1/8"	36"	7/8" x 3 1/2" x 3 1/2"	5 1/4" *	2"
J	T-SL 4.12	2"	1/4"	70"	1 1/2" x 5 1/2" x 5 1/2"	8"	3"
K	T-SL 4.14	2"	1/4"	70"	1 1/2" x 5 1/2" x 5 1/2"	8 1/4"	3"
Q	T-SL 4.13	2"	1/4"	70"	1 1/2" x 5 1/2" x 5 1/2"	8 1/4"	3"
R	T-SL 4.15	2"	1/4"	70"	1 1/2" x 5 1/2" x 5 1/2"	8 1/4"	3"
S	T-SL 4.02	1 1/4"	1/8"	52"	7/8" x 3 1/2" x 3 1/2"	5 5/16" *	2"
S (Alum)	T-SL 4.05	1 1/4"	1/8"	52"	7/8" x 3 1/2" x 3 1/2"	5 5/16" *	2"
T	T-SL 4.03	1 1/4"	1/8"	52"	7/8" x 3 1/2" x 3 1/2"	5 9/16" *	2"
T (Alum)	T-SL 4.06	1 1/4"	1/8"	52"	7/8" x 3 1/2" x 3 1/2"	5 5/16" *	2"
U	T-SL 4.19 T-SL 4.21	1 1/2"	-	48"	See T-SL 4.16 See T-SL 4.17	See T-SL 4.21	
V	T-SL 4.16	2"	1/4"	70"	1 1/2" x 5 1/2" x 5 1/2"	8 1/4"	3"
W	T-SL 4.17	2"	1/4"	70"	1 1/2" x 5 1/2" x 5 1/2"	8 1/4"	3"
PED Post Button or PB	T-SL 4.27	3/4"	1/8"	24"	3/4" x 2 3/4" x 2 3/4"	4 5/8"	2"

* Does Not Apply to Break-away Base Foundation Applications, Maximum Projection For these Applications is 3 1/2" above the foundation and 4" above the surrounding grade.

STANDARDS ENGINEER A. ALZUBI RECOMMENDED FOR APPROVAL GROUP MANAGER M. HANNA APPROVED STANDARDS COMMITTEE APPROVED FOR DISTRIBUTION	ARIZONA DEPARTMENT OF TRANSPORTATION INFRASTRUCTURE DELIVERY AND OPERATIONS DIVISION TRAFFIC SIGNAL AND LIGHTING STANDARD DRAWINGS	
	DRAWING NO. T-SL 4.28	
	POLE FOUNDATION ANCHOR BOLTS	
	DATE 11/22	